

User's Guide

**TRENDNET**<sup>®</sup>



N300 High Power Easy-N-Range Extender

TEW-737HRE

## Table of Contents

<b>Product Overview</b> .....	<b>1</b>	<b>Technical Specifications</b> .....	<b>13</b>
Contents of Package .....	1	<b>Troubleshooting</b> .....	<b>14</b>
Features .....	1	<b>Appendix</b> .....	<b>15</b>
<b>Hardware Features</b> .....	<b>2</b>	How to setup a static IP address on your computer's network card .....	15
<b>Application Diagram</b> .....	<b>3</b>	Federal Communication Commission Interference Statement.....	21
<b>Setting Up</b> .....	<b>4</b>	Europe – EU Declaration of Conformity.....	22
WPS Connection .....	4	RoHS .....	22
Web Browser Configuration.....	6	Limited Warranty .....	24
<b>Management</b> .....	<b>10</b>		
Multi-Language .....	10		
Wi-Fi Setting.....	10		
Wireless Client .....	10		
Management .....	11		
Upload Firmware .....	11		
Settings Management.....	12		
Status .....	12		

## Product Overview



### Contents of Package

- TEW-737HRE
- Multi-Language Quick Installation Guide
- CD-ROM (User's Guide)

If any package contents are missing or damaged, please contact the retail store, online retailer, or reseller/distributor from which the product was purchased.

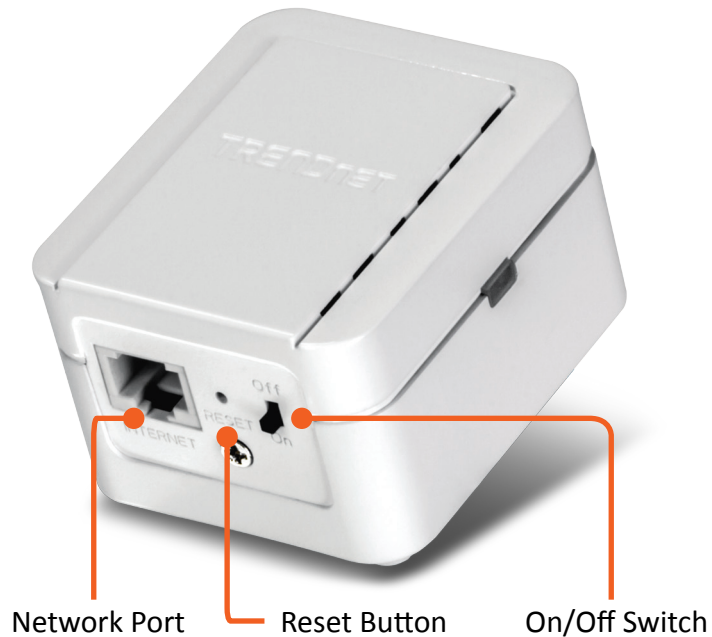
### Features

TRENDnet's N300 High Power Easy-N-Range Extender, model TEW-737HRE, offers extreme wireless coverage to eliminate existing wireless network dead spots. Setup takes minutes with no CD installation and it stays out of the way by plugging directly into an outlet. Simply press the Wi-Fi Protected Setup (WPS) button on your router, then on the TEW-737HRE and you're done—it's now extending your wireless network over a large area.

- High power wireless greatly extends the range of your existing wireless network
- Compact housing plugs directly into an electrical outlet
- No CD installation required
- N300 2x2 MIMO technology boosts up wireless performance
- Backward compatible with IEEE 802.11b/g devices
- Supports up to WPA2-PSK wireless encryption
- Automatically adopts router's password and encryption
- One-touch wireless connection using the Wi-Fi Protected Setup (WPS) button
- Low interference and high susceptibility deliver reliable performance
- 1 x 10/100 Mbps Ethernet port
- 1 x Wi-Fi Protected Setup (WPS) button
- 1 x Power on / off switch
- 3-year limited warranty

\*Maximum wireless signal rates are referenced from IEEE 802.11 theoretical specifications. Actual data throughput and coverage will vary depending on interference, network traffic, building materials and other conditions.

## Hardware Features

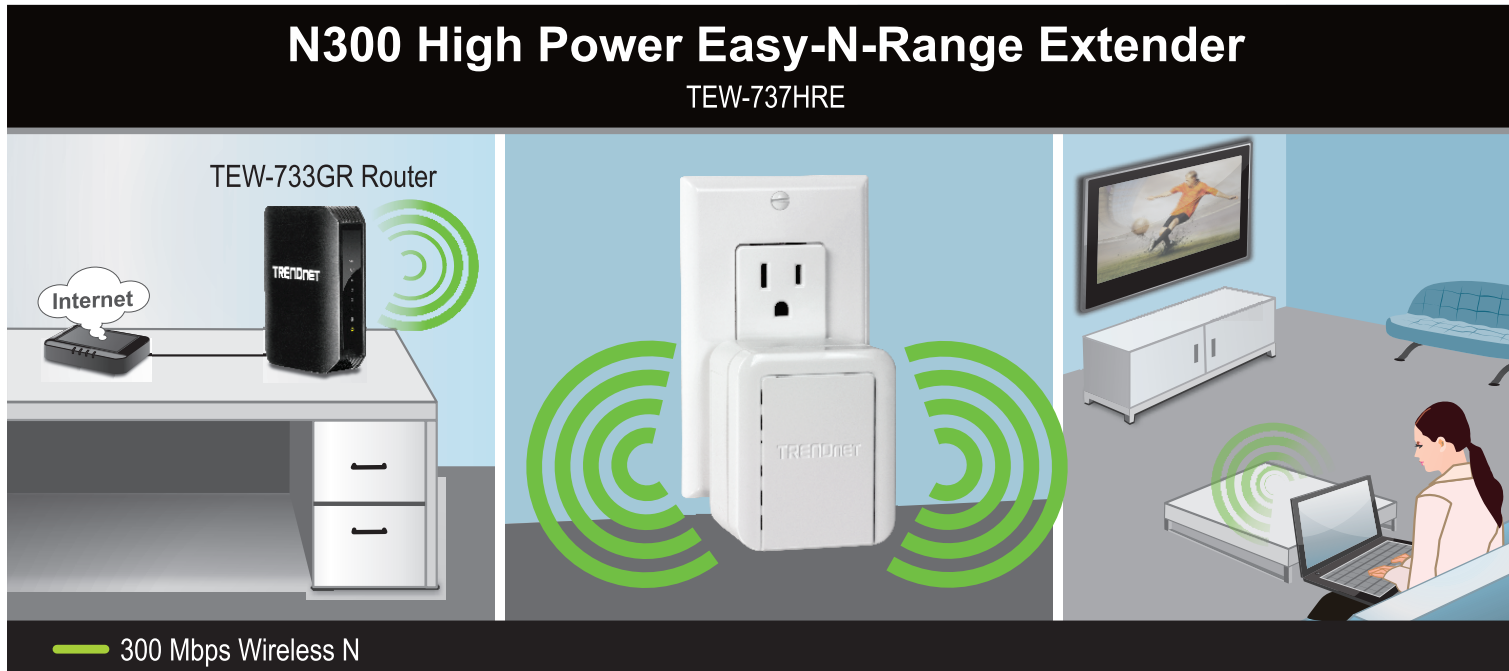


- **Network Port** — Connect a network cable (Ethernet cable) to your computer for repeater configuration.
- **Reset Button** — Resets your repeater. Push and hold this button for 5 seconds with a pin or paper clip to reset configuration to factory default.
- **On/Off Switch** — Switch the On/Off button to turn on or turn off your repeater.



- **WPS (Wi-Fi Protected Setup) Button + LED Indicator** — Push and release the WPS button to activate WPS copying wireless settings from your router. The LED indicator will start blinking in green when WPS pairing is activated.
- **Power Plug Release Button** — To exchange different style of power plug. (This package comes with only one power plug.)

## Application Diagram



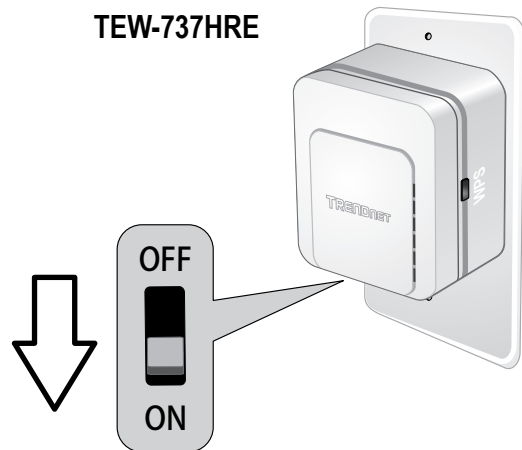
TEW-737HRE is a high power repeater which can extend your wireless router's range or coverage. Install TEW-737HRE at a location in between wireless router and your computer.

## Setting Up

There are two ways of setup: by pushing Wi-Fi Protected Setup (WPS) button or web browser configuration.

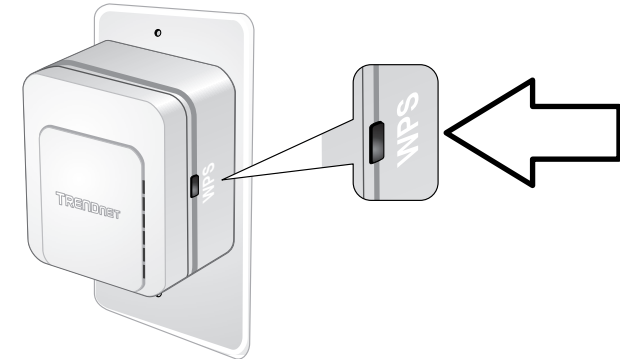
### WPS Connection

- 1** Plug in the TEW-737HRE to a power outlet nearby your wireless router and switch the device on.



The LED indicator will start blinking in red, it means the system is booting up. When the LED blinking in amber, the TEW-737HRE is ready for setup.

- 2** Press and release the WPS button on the repeater. The LED will blinking in green, which means the TEW-737HRE has begun WPS pairing.



- 3** Press and hold the WPS button on the router for 5 seconds to start WPS pairing.



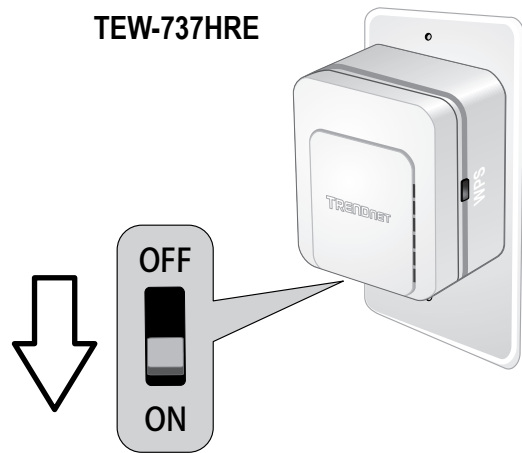
- The LED will change to solid green once the WPS connection is established.



- (Optional) Relocate the TEW-737HRE and plug at a location between wireless router and your computer.

## Web Browser Configuration

- 1** Plug in the TEW-737HRE to a power outlet nearby your wireless router and computer, then switch the device on.



The LED indicator will start blinking in red, which means the system is booting up. When the LED blinking in amber, the TEW-737HRE is ready for setup.

- 2** Open your computer's wireless network settings and search available wireless networks for "TRENDnet737". No security password is required. The wireless encryption security will be setup in following steps.



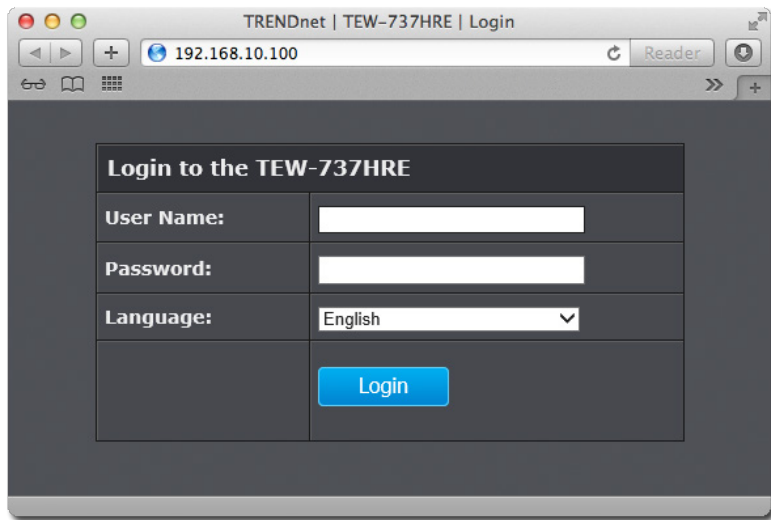
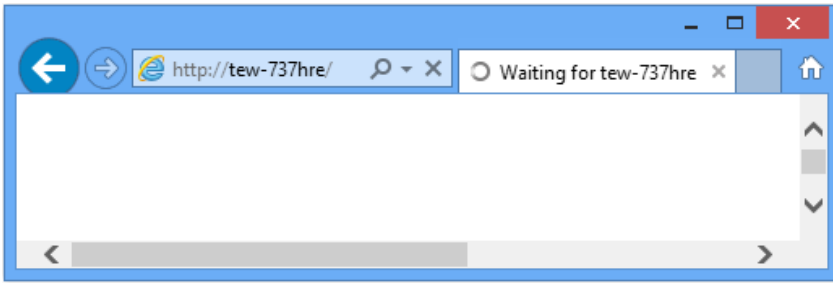
Or,

Connect a network cable (not included in the package) from your computer to the TEW-737HRE's network port.

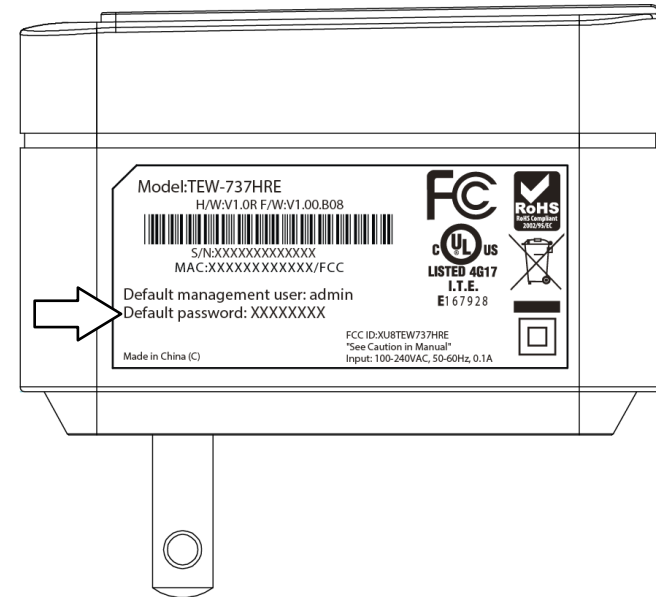




- 3 Open a web browser and type **http://tew-737hre** or **http://192.168.10.100** access the administration page. ( See trouble shooting page if you cannot access the administration page.)



Enter administrator login information. (The default user name is **admin** and the password is printed on the device label.)



\* Please reference the troubleshooting section if you cannot access the administration web page.

- 4 Change your administrator password from the factory default setting. Click **Apply** to continue.

**TRENDNET** N300 High Power Easy-N-Range Extender TEW-737HRE

Wireless

Administrator

- Management
- Upload Firmware
- Settings Management
- Status
- Logout

**Management**

Administrator (The login name is "admin")

New Password: [password field]

Confirm Password: [password field]

User (The login name is "user")

New Password: [password field]

Confirm Password: [password field]

**Device Name Settings**

Host Name: TEW-737HRE

Cancel Apply

© Copyright 2013 TRENDnet. All Rights Reserved.

- 5 TEW-737HRE will apply the password change and then reboot. Click **Back** and login again with your new password.

The settings are saving and taking effect.

Please wait for 7 seconds.

Back

\* Make sure you are still connecting to the default SSID: "TRENDnet737" after device reboots.

- 6 Click **Site Survey** to look for the wireless router or access point you want to connect with. (If you want to setup the connection manually, just enter the SSID and skip site survey, go to step 8 directly.)

Wireless

- Wi-Fi Setting
- Wireless Client

Administrator

**Wi-Fi Setting**

Wi-Fi Network Setting

Wireless Mode: Repeater Mode: **Site Survey**

SSID: TRENDnet737\_2.4GHz

Wi-Fi Security Mode

Authentication Type: Disable

Cancel Apply

Wireless

- Wi-Fi Setting
- Wireless Client

Administrator

**Wi-Fi Setting**

Select Wi-Fi Network

[input field]

- 7 Select the wireless router or access point you want to connect with and then click **Connect**.

Wireless

- Wi-Fi Setting
- Wireless Client

Administrator

**Wi-Fi Setting**

ID	SSID	Security Mode	Channel	Signal (%)	Select
1	TRENDnet750_2.4GHz_0078	WPA2-PSK	6	100	<input type="radio"/>
2	SkyFall	WPA2-PSK	1	100	<input checked="" type="radio"/>
3	TRENDnet751_2.4GHz_5247	WPA2-PSK	8	96	<input type="radio"/>
4	2.4GHz	WPA-PSK	1	94	<input type="radio"/>

Rescan Cancel Connect

- 8** Select authentication type and enter pass phrase and then click **Apply**.

The screenshot shows the 'Wi-Fi Setting' page in the TEW-737HRE web interface. The page is titled 'Wi-Fi Setting' and has a sidebar with 'Wireless' and 'Administrator' sections. The main content area is divided into 'Wi-Fi Network Setting' and 'Wi-Fi Security Mode'. Under 'Wi-Fi Network Setting', 'Wireless Mode' is set to 'Repeater Mode' with a 'Site Survey' button. The 'SSID' field contains 'TRENDNET'. Under 'Wi-Fi Security Mode', 'Authentication Type' is set to 'WPA/WPA2-Personal'. 'Cipher Type' has radio buttons for 'TKIP', 'AES', and 'Auto', with 'AES' selected. The 'Passphrase' and 'Confirmed Passphrase' fields are filled with dots. 'Cancel' and 'Apply' buttons are at the bottom.

- 9** TEW-737HRE will reboot to apply the change. The LED will cycle through flashing red, flashing amber, and then turn to solid green once the connection is established.



- 10** (Optional) Relocate the TEW-737HRE and plug at a location between wireless router and your computer.

## Management

### Multi-Language

Select your preferred language in the TEW-737HRE login page.

Login to the TEW-737HRE	
User Name:	<input type="text" value="admin"/>
Password:	<input type="password" value="••••••••"/>
Language:	<ul style="list-style-type: none"> <li>English</li> <li>Spanish</li> <li>German</li> <li>Russia</li> <li>French</li> </ul>

### Wi-Fi Setting

Click **Wi-Fi Setting** in the menu. The default TEW-737HRE Wi-Fi setting will show up. You can change the setting or copy Wi-Fi setting from wireless router by clicking **Site Survey**. (See Setup section for details.)

Wireless													
<ul style="list-style-type: none"> <li>Wi-Fi Setting</li> <li>Wireless Client</li> </ul>	<h3>Wi-Fi Setting</h3> <table border="1"> <thead> <tr> <th colspan="2">Wi-Fi Network Setting</th> </tr> </thead> <tbody> <tr> <td>Wireless Mode</td> <td>Repeater Mode <b>Site Survey</b></td> </tr> <tr> <td>SSID</td> <td>TRENDnet737_2.4GHz_</td> </tr> <tr> <th colspan="2">Wi-Fi Security Mode</th> </tr> <tr> <td>Authentication Type</td> <td>Disable</td> </tr> <tr> <td><b>Cancel</b></td> <td><b>Apply</b></td> </tr> </tbody> </table>	Wi-Fi Network Setting		Wireless Mode	Repeater Mode <b>Site Survey</b>	SSID	TRENDnet737_2.4GHz_	Wi-Fi Security Mode		Authentication Type	Disable	<b>Cancel</b>	<b>Apply</b>
Wi-Fi Network Setting													
Wireless Mode	Repeater Mode <b>Site Survey</b>												
SSID	TRENDnet737_2.4GHz_												
Wi-Fi Security Mode													
Authentication Type	Disable												
<b>Cancel</b>	<b>Apply</b>												

### Wireless Client

Click **Wireless Client** in the menu to list associated wireless clients.

Wireless					
<ul style="list-style-type: none"> <li>Wi-Fi Setting</li> <li>Wireless Client</li> </ul>	<h3>Wireless Client</h3> <table border="1"> <thead> <tr> <th>Connected Time</th> <th>MAC Address</th> </tr> </thead> <tbody> <tr> <td>00:14:10</td> <td>00:14:d1:d9:d4:01</td> </tr> </tbody> </table>	Connected Time	MAC Address	00:14:10	00:14:d1:d9:d4:01
Connected Time	MAC Address				
00:14:10	00:14:d1:d9:d4:01				

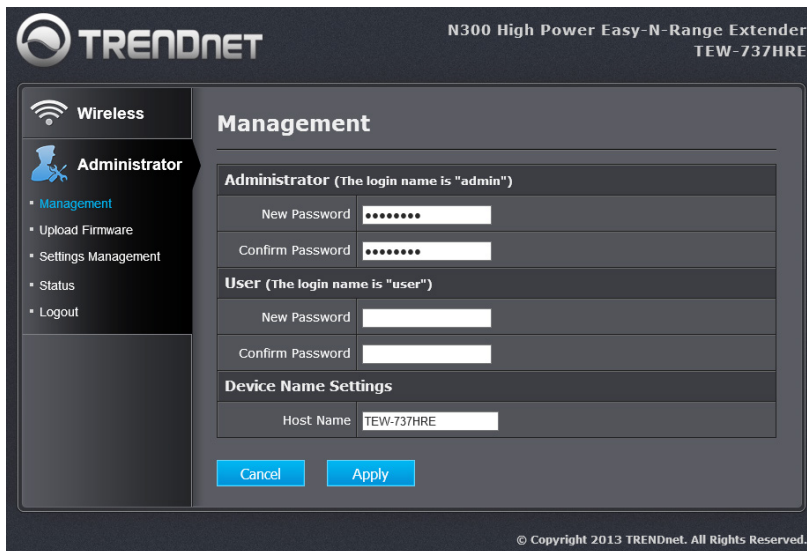
## Management

Click **Management** in the menu to change your administrator password, user password and device name.

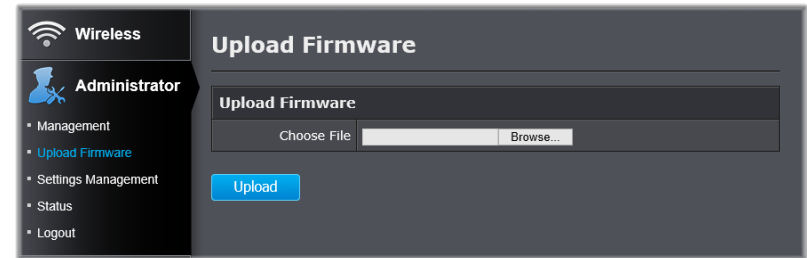
**Administrator:** Administrator is authorized to change TEW-737HRE settings.

**User:** User is authorized to login and view TEW-737HRE settings, but not change them.

**Device Name:** The host name can be searched on the network. You can change the host name of the TEW-737HRE to another name.



## Upload Firmware



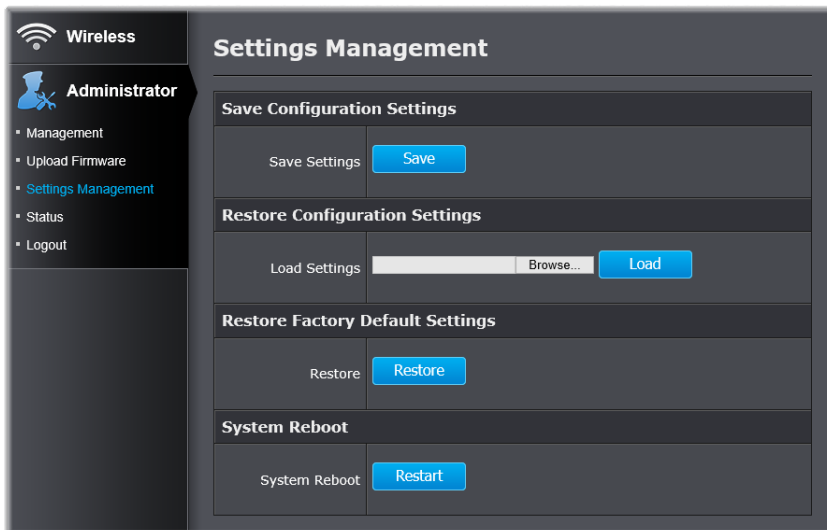
Click **Upload Firmware** in the menu to list associated wireless clients.

TRENDnet may periodically release firmware upgrades that might add features or fix problems associated with your TRENDnet model and version. To find out if there is a firmware upgrade available for your device, please check your TRENDnet model and version using the link.

<http://www.trendnet.com/downloads/>

1. If a firmware upgrade is available, download the firmware to your computer.
2. Unzip the file to a folder on your computer.
3. Log into the repeater (default <http://tew-737HRE>)
4. Click on **Administrator** and **Upload Firmware**
5. Click **Browse...** and navigate to the folder on your computer in which the unzipped firmware file (.bin) is.
6. Located and select it the firmware file.
7. Click **Upload**.

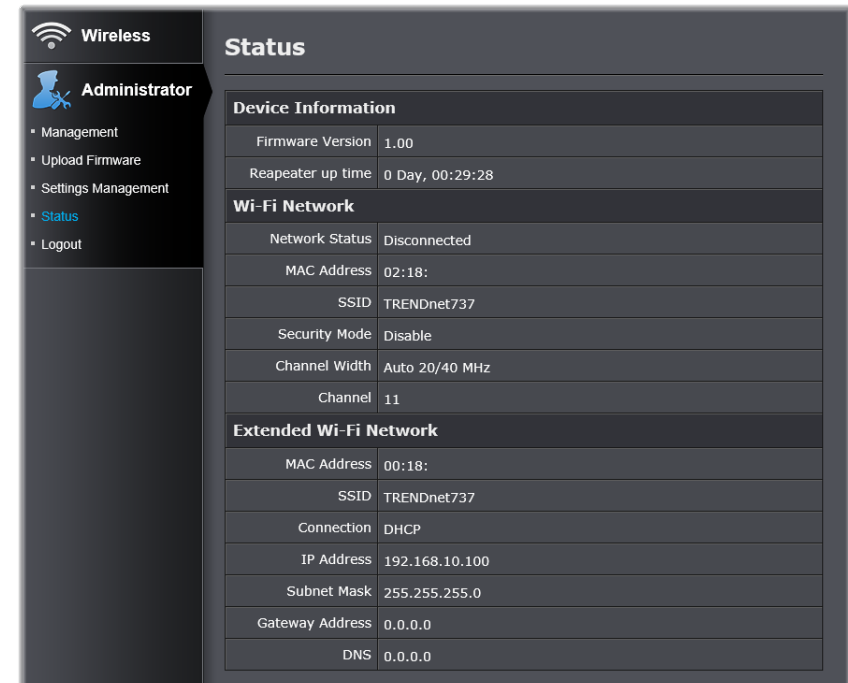
## Settings Management



Save Configuration Settings	Click <b>Save</b> to export settings to your computer
Restore Configuration Settings	To restore settings previously saved on your computer, click <b>Browse...</b> to select a configuration file and then click <b>Load</b> to import the previous settings.
Restore Factory Default Settings	Click <b>Restore</b> to restore settings to factory defaults.
System Reboot	Click <b>Restart</b> to reboot your TEW-737HRE.

## Status

Click **Status** in the menu to list the TEW-737HRE status details.



## Technical Specifications

Hardware		
<b>Standards</b>	IEEE 802.11n, IEEE 802.11g, IEEE 802.11b IEEE 802.3u, and IEEE 802.3	
<b>Interface</b>	10/100 Mbps Auto-MDIX network port	
<b>LED Indicator</b>	Green	Static: Repeater connects to AP successfully
		Flashing: Initializing WPS
	Amber	Flashing: Not able to connect to AP
	Red	Repeater is restarting
<b>Power</b>	On / off switch	
<b>Buttons</b>	Reset button – restores factory default settings WPS button – enables WPS function	
<b>Power Plug</b>	Input: 100 ~ 240 V, AC, 50~60 Hz (6W Max.)	
<b>Dimensions (L x W x H)</b>	67 x 56 x 45 mm (2.6 x 2.2 x 1.8 in.) – Base 67 x 56 x 60 mm (2.6 x 2.2 x 2.4 in.) – With US plug 67 x 56 x 83 mm (2.6 x 2.2 x 3.3 in.) – With Euro plug 67 x 56 x 74 mm (2.6 x 2.2 x 2.9 in.) – With UK plug	
<b>Weight</b>	120 g (4.2 oz)	
<b>Temperature</b>	Operating: 0° ~ 40°C (32° ~ 104°F)	
<b>Humidity</b>	Max 90% (non-condensing)	

Wireless	
<b>Modulation</b>	OFDM and CCK
<b>Antenna</b>	Built in antenna
<b>Frequency</b>	2.412 - 2.462GHz FCC 2.412 – 2.472GHz ETSI
<b>Data Rate (Auto Fallback)</b>	802.11n: up to 300 Mbps 802.11g: up to 54 Mbps 802.11b: up to 11 Mbps
<b>Output Power</b>	802.11b: FCC: 20 dBm (typical), CE: 18 dBm (typical) @ 11 Mbps 802.11g: 18 dBm (typical) @ 54 Mbps 802.11n: 17 dBm (typical) @ 300 Mbps
<b>Receiving Sensitivity</b>	802.11b: -90 dBm (typical) @ 11 Mbps 802.11g: -72 dBm (typical) @ 54 Mbps 802.11n: -66 dBm (typical) @ 300 Mbps
<b>Encryption</b>	64/128-bit WEP, WPA / WPA2-PSK
<b>Channels</b>	1-11 (FCC), 1-13 (ETSI)
<b>Certifications</b>	CE, FCC

\*Maximum wireless signal rates are referenced from IEEE 802.11 theoretical specifications. Actual data throughput and coverage will vary depending on interference, network traffic, building materials and other conditions.

## Troubleshooting

**Situation:** I typed `http://tew-737hre` but I am not able to access the unit. What should I do?

**Solution:**

The host name prospecting is only for Windows systems, including Windows XP, Vista, 7 and 8. Please enter an IP address (default: 192.168.10.100) if you are not using Windows systems.

Proceed following steps if you are using a Windows system.

1. Turn the TEW-737HRE's power switch on.
2. Reset the device to factory default settings by pushing the reset button for 5 seconds.
3. Make sure you have a good wireless connection to the default SSID:TRENDnet737 or connect to the TEW-737HRE using a network cable.
4. Make sure your laptop/PC is not joined to any domain
5. Open a browser and type `http://tew-737hre` (You must lead with **http://** to resolve the host name)

**Situation:** How do I reset the device to factory default?

**Solution:**

1. Use a pin such as a staple to press and hold the reset button at the bottom of the TEW-737HRE for 5 seconds.
2. You can also reset from the management page.

**Situation:** I typed `http://192.168.10.100` but I am not able to access the unit. What should I do?

**Solution:**

1. Turn the TEW-737HRE's switch on.
2. Reset the device to factory default settings by pushing the reset button for 5 seconds.
3. Make sure you have a good wireless connection to the default SSID: TRENDnet737 or connect to the TEW-737HRE using a network cable
4. Make sure your computer has no other network connections. For example, if you access TEW-737HRE through wireless, disconnect your Ethernet cable.
5. Open a browser and type `http://192.168.10.100`

**Situation:** How do I make sure my unit is connected to a router/AP?

**Solution:**

The LED will turn solid green when the TEW-737HRE is successfully connected to a router/AP.

**Situation:** How can I access the TEW-737HRE once it is setup?

**Solution:**

You can use its host name (`http://tew-737hre`) or IP address to access the TEW-737HRE. After repeater setup, the TEW737HRE will get an IP address from your router (DHCP). Check the DHCP client list on your router if you want to access the TEW-737HRE with its IP address.



## Appendix

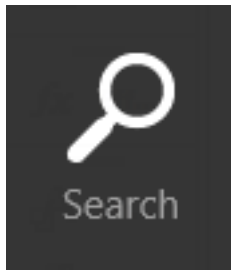
### How to setup a static IP address on your computer's network card

If your computer has multiple network cards installed, physical and virtual, chances are you may experience difficulty in connecting to the TEW-737HRE without setting up your own IP address. This section will demonstrate how to setup a static IP on your network card. It is strongly recommended that you consult your computer or operating system manufacturer directly for assistance on the proper procedure for configuring network settings.

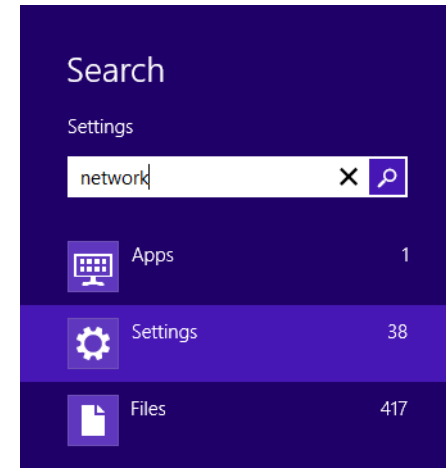
Before setup, make sure you don't have static IP setup on other network cards to avoid network address collision.

#### Windows 8

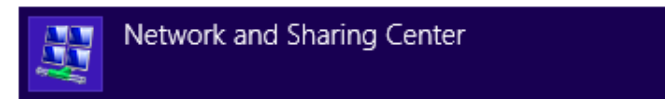
1. Open the Charms bar by moving the mouse to the top right corner of the screen or press the Windows Key + C and click on Search.



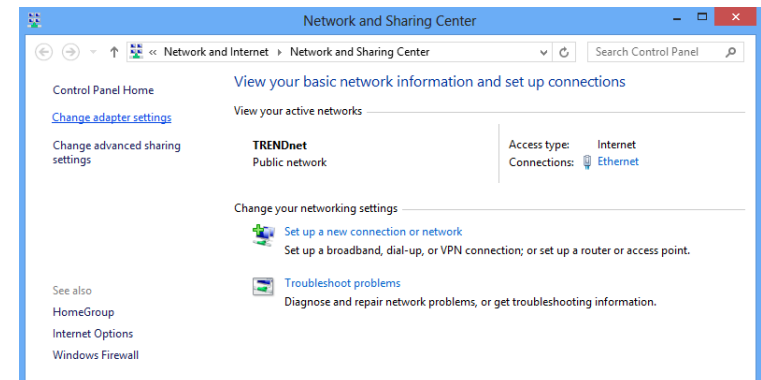
2. Type "network" in the search box and click Settings to focus your search.



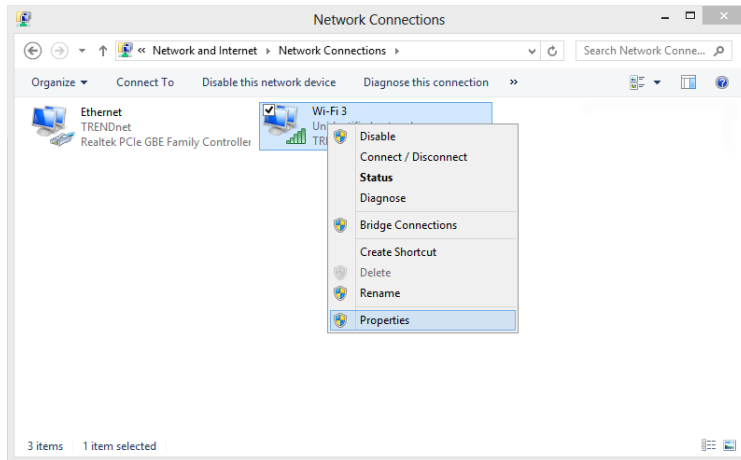
3. Choose **Network and Sharing Center**



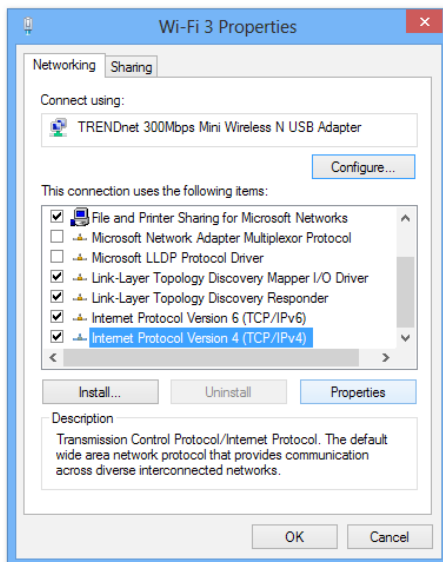
4. Click **Change adapter settings** on the left-hand side.



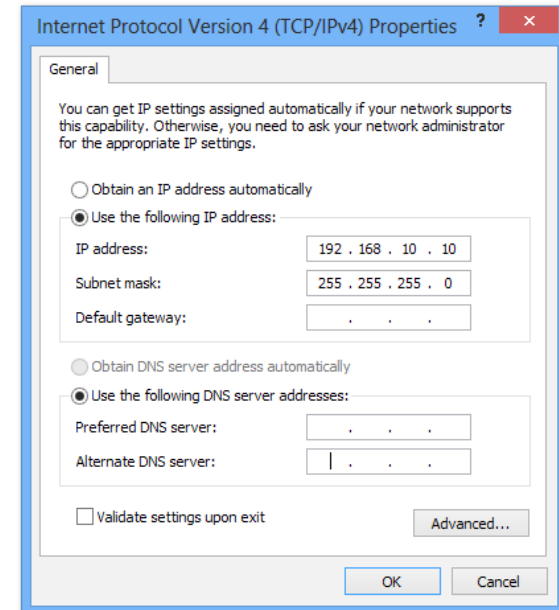
5. Click **Properties** on the selected network adapter.



6. Select **Internet Protocol Version 4 (TCP/IPv4)** and then click **Properties**.

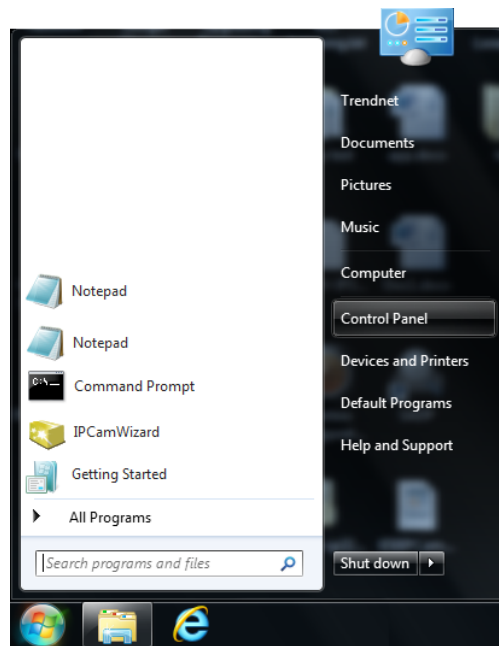


7. Click **Use the following address** and enter the static IP address and related information. For setting up the TEW-737HRE, you can enter 192.168.10.10 as your IP address, 255.255.255.0 as the Subnet mask. Leave the other fields blank. Click **OK** to apply the changes.

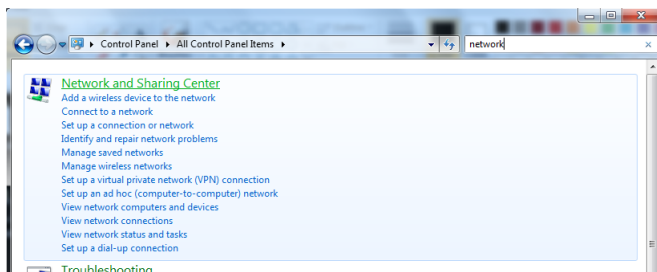


## Windows 7

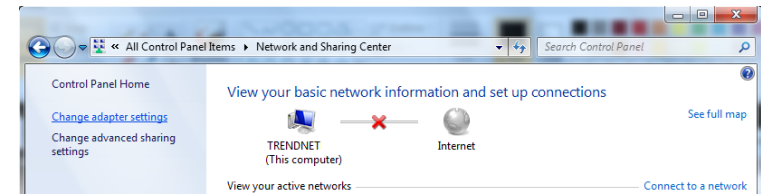
1. Click **Control Panel** from the **Start** menu.



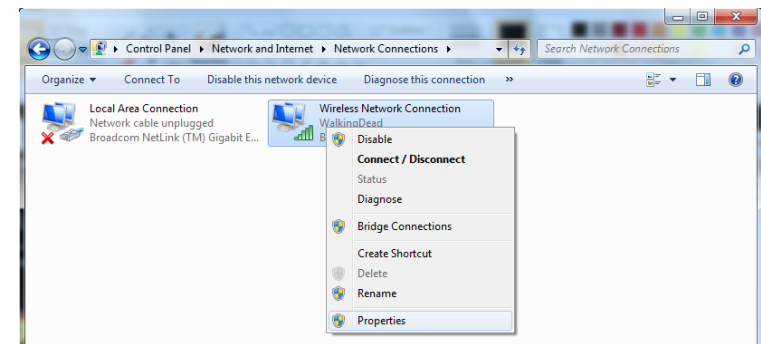
2. Type "network" in the search box to focus your selection. Click on **Network and Sharing Center**



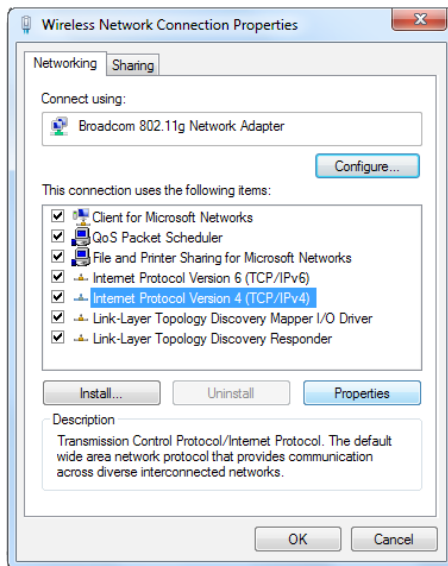
3. Click **Change adapter settings** on the left-hand side.



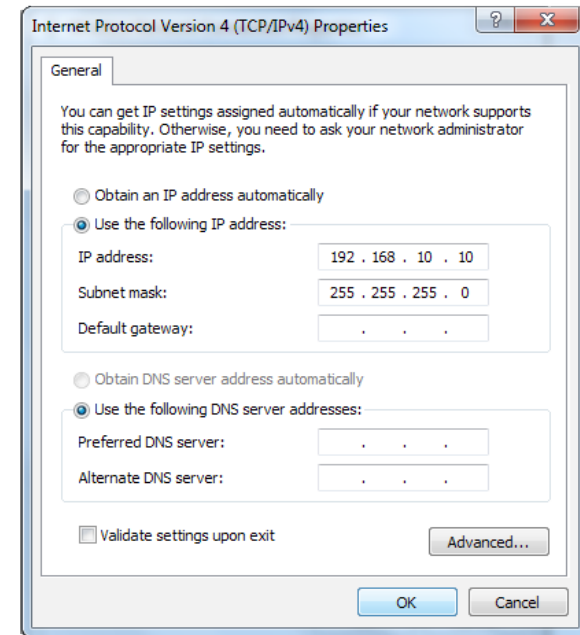
4. Click **Properties** on the selected network adapter.



5. Select **Internet Protocol Version 4 (TCP/IPv4)** and then click **Properties**.

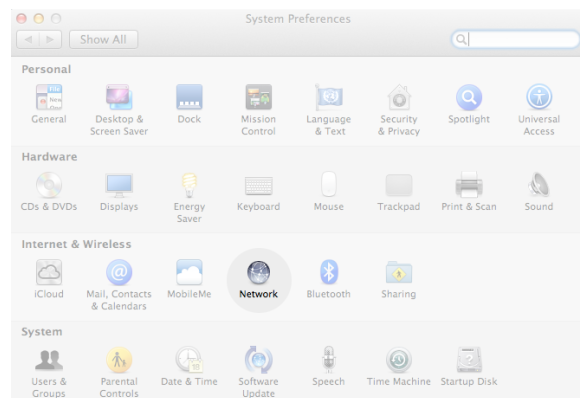
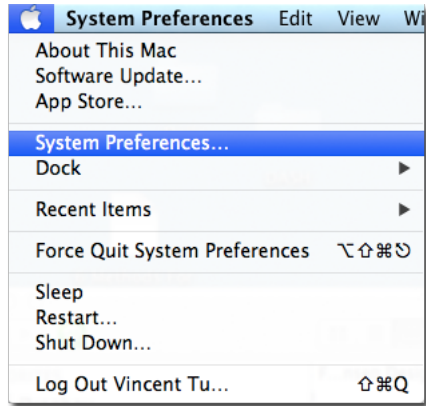


6. Click **Use the following address** and enter the static IP address and related information. For setting up the TEW-737HRE, you can enter 192.168.10.10 as the IP address, 255.255.255.0 as the Subnet mask. Leave other fields blank. Click **OK** to apply the changes.

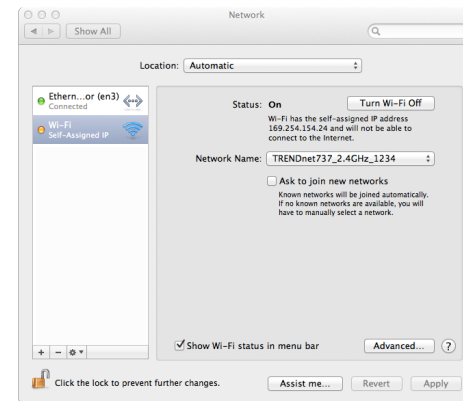


**OS X**

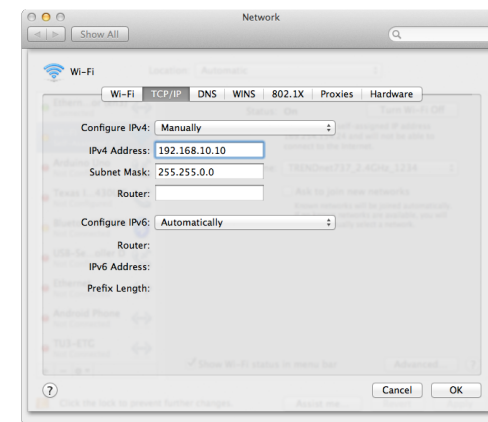
1. Click the **Apple** logo in the top-left corner of your screen. Click on **System Preferences...** . In the Internet and Wireless section, click on **Network**.



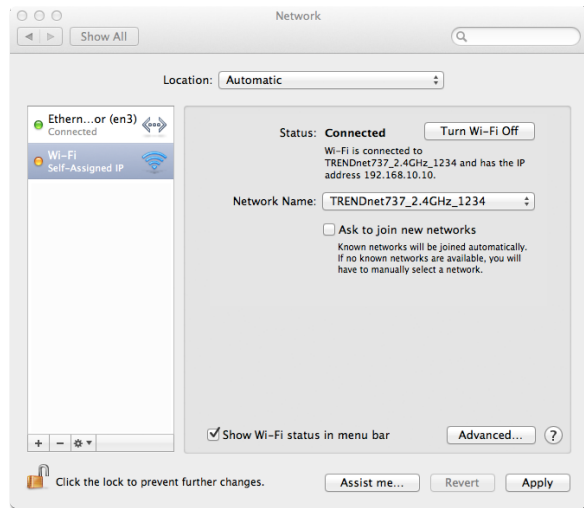
2. Select the network card you want to configure on the left banner (e.g. **Wi-Fi** ). Click **Advanced ...**



3. Choose TCP/IP. In Configure IPv4, select Manually. Input the static IP address, subnet mask, and your router IP address. (In order to setup the TEW-737HRE, you can put in 192.168.10.10 as the IP address, 255.255.255.0 as the subnet mask and leave router in blank. Click **OK** to exit advanced setup.



4. Click Apply to apply the changes.



**Federal Communication Commission Interference Statement**

This equipment has been tested and found to comply with the limits for a Class B digital device, pursuant to Part 15 of the FCC Rules. These limits are designed to provide reasonable protection against harmful interference in a residential installation. This equipment generates uses and can radiate radio frequency energy and, if not installed and used in accordance with the instructions, may cause harmful interference to radio communications. However, there is no guarantee that interference will not occur in a particular installation. If this equipment does cause harmful interference to radio or television reception, which can be determined by turning the equipment off and on, the user is encouraged to try to correct the interference by one of the following measures:

- Reorient or relocate the receiving antenna.
- Increase the separation between the equipment and receiver.
- Connect the equipment into an outlet on a circuit different from that to which the receiver is connected.
- Consult the dealer or an experienced radio/TV technician for help.

**FCC Caution:** Any changes or modifications not expressly approved by the party responsible for compliance could void the user's authority to operate this equipment.

This device complies with Part 15 of the FCC Rules. Operation is subject to the following two conditions: (1) This device may not cause harmful interference, and (2) this device must accept any interference received, including interference that may cause undesired operation.

**IMPORTANT NOTE:****FCC Radiation Exposure Statement:**

This equipment complies with FCC radiation exposure limits set forth for an uncontrolled environment. This equipment should be installed and operated with minimum distance 20cm between the radiator & your body.

This transmitter must not be co-located or operating in conjunction with any other antenna or transmitter.

The availability of some specific channels and/or operational frequency bands are country dependent and are firmware programmed at the factory to match the intended destination. The firmware setting is not accessible by the end user.

**Europe – EU Declaration of Conformity**

This device complies with the essential requirements of the R&TTE Directive 1999/5/EC, 2006/95/EC and 2009/125/EC.. The following test methods have been applied in order to prove presumption of conformity with the essential requirements of the R&TTE Directive 1999/5/EC, 2006/95/EC and 2009/125/EC:

EN 60950-1:2006+A11:2009+A1:2010+A12:2011  
IEC 60950-1:2005 (2nd Edition) Am 1:2009  
Safety of Information Technology Equipment

EN 62311:2008  
Product standard to demonstrate the compliance of radio base stations and fixed terminal stations for wireless telecommunication systems with the basic restrictions or the reference levels related to human exposure to radio frequency electromagnetic fields (110MHz - 40 GHz) - General public

EN 300 328 V1.8.1  
Electromagnetic compatibility and Radio spectrum Matters (ERM); Wideband transmission systems; Data transmission equipment operating in the 2,4 GHz ISM band and using wide band modulation techniques; Harmonized EN covering essential requirements under article 3.2 of the R&TTE Directive

EN 301 489-1 V1.9.2  
Electromagnetic compatibility and Radio Spectrum Matters (ERM); ElectroMagnetic Compatibility (EMC) standard for radio equipment and services; Part 1: Common technical requirements

EN 301 489-17 V2.2.1  
Electromagnetic compatibility and Radio spectrum Matters (ERM); ElectroMagnetic Compatibility (EMC) standard for radio equipment and services; Part 17: Specific conditions for 2,4 GHz wideband transmission systems and 5 GHz high performance WLAN equipment

This device is a 2.4 GHz wideband transmission system (transceiver), intended for use in all EU member states and EFTA countries, except in

France and Italy where restrictive use applies.

In Italy the end-user should apply for a license at the national spectrum authorities in order to obtain authorization to use the device for setting up outdoor radio links and/or for supplying public access to telecommunications and/or network services.









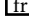


This device may not be used for setting up outdoor radio links in France and in some areas the RF output power may be limited to 10 mW EIRP in the frequency range of 2454 – 2483.5 MHz. For detailed information the end-user should contact the national spectrum authority in France.

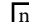





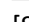


**RoHS**

This product is RoHS compliant.





 Český [Czech]	TRENDnet tímto prohlašuje, že tento TEW-737HRE je ve shodě se základními požadavky a dalšími příslušnými ustanoveními směrnice 1999/5/ES, 2006/95/ES, a 2009/125/ES.
 Dansk [Danish]	Undertegnede TRENDnet erklærer herved, at følgende udstyr TEW-737HRE overholder de væsentlige krav og øvrige relevante krav i direktiv 1999/5/EF, 2006/95/EF, og 2009/125/EF.
 Deutsch [German]	Hiermit erklärt TRENDnet, dass sich das Gerät TEW-737HRE in Übereinstimmung mit den grundlegenden Anforderungen und den übrigen einschlägigen Bestimmungen der Richtlinie 1999/5/EG, 2006/95/EG und 2009/125/EG befindet.
 Eesti [Estonian]	Käesolevaga kinnitab TRENDnet seadme TEW-737HRE vastavust direktiivi 1999/5/EÜ, 2006/95/EÜ ja 2009/125/EÜ põhinõuetele ja nimetatud direktivist tulenevatele teistele asjakohastele sätetele.
 English	Hereby, TRENDnet, declares that this TEW-737HRE is in compliance with the essential requirements and other relevant provisions of Directive 1999/5/EC, 2006/95/EC, and 2009/125/EC.
 Español [Spanish]	Por medio de la presente TRENDnet declara que el TEW-737HRE cumple con los requisitos esenciales y cualesquiera otras disposiciones aplicables o exigibles de la Directiva 1999/5/CE, 2006/95/CE, 2009/125/CE y.
 Ελληνική [Greek]	ΜΕ ΤΗΝ ΠΑΡΟΥΣΑ TRENDnet ΔΗΛΩΝΕΙ ΟΤΙ ΤΕW-737HRE ΣΥΜΜΟΡΦΩΝΕΤΑΙ ΠΡΟΣ ΤΙΣ ΟΥΣΙΩΔΕΙΣ ΑΠΑΙΤΗΣΕΙΣ ΚΑΙ ΤΙΣ ΛΟΙΠΕΣ ΣΧΕΤΙΚΕΣ ΔΙΑΤΑΞΕΙΣ ΤΗΣ ΟΔΗΓΙΑΣ 1999/5/EK, 2006/95/EK, 2009/125/EK κ.α.λ.
 Français [French]	Par la présente TRENDnet déclare que l'appareil TEW-737HRE est conforme aux exigences essentielles et aux autres dispositions pertinentes de la directive 1999/5/CE, 2006/95/CE, 2009/125/CE et.
 Italiano [Italian]	Con la presente TRENDnet dichiara che questo TEW-737HRE è conforme ai requisiti essenziali ed alle altre disposizioni pertinenti stabilite dalla direttiva 1999/5/CE, 2006/95/CE e 2009/125/CE.
 Latvīski [Latvian]	Ar šo TRENDnet deklarē, ka TEW-737HRE atbilst Direktīvas 1999/5/EK, 2006/95/EK, un 2009/125/EK būtiskajām prasībām un citiem ar to saistītajiem noteikumiem.
 Lietuvių [Lithuanian]	Šiuo TRENDnet deklaruoja, kad šis TEW-737HRE atitinka esminius reikalavimus ir kitas 1999/5/EB, 2006/95/EB ir 2009/125/EB Direktyvos nuostatas.

 Nederlands [Dutch]	Hierbij verklaart TRENDnet dat het toestel TEW-737HRE in overeenstemming is met de essentiële eisen en de andere relevante bepalingen van richtlijn 1999/5/EG, 2006/95/EG, en 2009/125/EG.
 Malti [Maltese]	Hawnhekk, TRENDnet, jiddikjara li dan TEW-737HRE jikkonforma mal-ftigijiet essenzjali u ma provvedimenti oħrajn relevanti li hemm fid-Dirrettiva 1999/5/KE, 2006/95/KE, u 2009/125/KE.
 Magyar [Hungarian]	Alulírott, TRENDnet nyilatkozom, hogy a TEW-737HRE megfelel a vonatkozó alapvető követelményeknek és az 1999/5/EK irányelv, a 2006/95/EK és a 2009/125/EK irányelv egyéb előírásainak.
 Polski [Polish]	Niniejszym TRENDnet oświadcza, że TEW-737HRE jest zgodny z zasadniczymi wymogami oraz pozostałymi stosownymi postanowieniami Dyrektywy 1999/5/WE, 2006/95/WE i 2009/125/WE.
 Português [Portuguese]	TRENDnet declara que este TEW-737HRE está conforme com os requisitos essenciais e outras disposições da Directiva 1999/5/CE, 2006/95/CE e 2009/125/CE.
 Slovensko [Slovenian]	TRENDnet izjavlja, da je ta TEW-737HRE v skladu z bistvenimi zahtevami in ostalimi relevantnimi določili direktive 1999/5/ES, 2006/95/ES, a 2009/125/ES.
 Slovensky [Slovak]	TRENDnet týmto vyhlasuje, že TEW-737HRE spĺňa základné požiadavky a všetky príslušné ustanovenia Smernice 1999/5/EF.
 Suomi [Finnish]	TRENDnet vakuuttaa täten että TEW-737HRE tyyppinen laite on direktiivin 1999/5/EY, 2006/95/EY ja 2009/125/EY oleellisten vaatimusten ja sitä koskevien direktiivin muiden ehtojen mukainen.
 Svenska [Swedish]	Härmed intygar TRENDnet att denna TEW-737HRE står i överensstämmelse med de väsentliga egenskapskrav och övriga relevanta bestämmelser som framgår av direktiv 1999/5/EG, 2006/95/EG och 2009/125/EG.

## Limited Warranty

TRENDnet warrants its products against defects in material and workmanship, under normal use and service, for the following lengths of time from the date of purchase.

- TEW-737HRE – 3-year warranty
- AC/DC Power Adapter, Cooling Fan, and Power Supply carry 1 year warranty.

If a product does not operate as warranted during the applicable warranty period, TRENDnet shall reserve the right, at its expense, to repair or replace the defective product or part and deliver an equivalent product or part to the customer. The repair/replacement unit's warranty continues from the original date of purchase. All products that are replaced become the property of TRENDnet. Replacement products may be new or reconditioned. TRENDnet does not issue refunds or credit. Please contact the point-of-purchase for their return policies.

TRENDnet shall not be responsible for any software, firmware, information, or memory data of customer contained in, stored on, or integrated with any products returned to TRENDnet pursuant to any warranty.

There are no user serviceable parts inside the product. Do not remove or attempt to service the product by any unauthorized service center. This warranty is voided if (i) the product has been modified or repaired by any unauthorized service center, (ii) the product was subject to accident, abuse, or improper use (iii) the product was subject to conditions more severe than those specified in the manual.

Warranty service may be obtained by contacting TRENDnet within the applicable warranty period and providing a copy of the dated proof of the purchase. Upon proper submission of required documentation a Return Material Authorization (RMA) number will be issued. An RMA number is required in order to initiate warranty service support for all TRENDnet products. Products that are sent to TRENDnet for RMA service must have the RMA number marked on the outside of return packages and sent to TRENDnet prepaid, insured and packaged appropriately for safe shipment. Customers shipping from outside of the USA and Canada are responsible for return shipping fees. Customers shipping from outside of the USA are responsible for custom charges, including but not limited to, duty, tax, and other fees.

**WARRANTIES EXCLUSIVE:** IF THE TRENDNET PRODUCT DOES NOT OPERATE AS WARRANTED ABOVE, THE CUSTOMER'S SOLE REMEDY SHALL BE, AT TRENDNET'S OPTION, REPAIR OR REPLACE. THE FOREGOING WARRANTIES AND REMEDIES ARE EXCLUSIVE AND ARE IN LIEU OF ALL OTHER WARRANTIES, EXPRESSED OR IMPLIED, EITHER IN FACT OR BY OPERATION OF LAW, STATUTORY OR OTHERWISE, INCLUDING WARRANTIES OF MERCHANTABILITY AND FITNESS FOR A PARTICULAR PURPOSE. TRENDNET NEITHER ASSUMES NOR AUTHORIZES ANY OTHER PERSON TO ASSUME

FOR IT ANY OTHER LIABILITY IN CONNECTION WITH THE SALE, INSTALLATION MAINTENANCE OR USE OF TRENDNET'S PRODUCTS.

TRENDNET SHALL NOT BE LIABLE UNDER THIS WARRANTY IF ITS TESTING AND EXAMINATION DISCLOSE THAT THE ALLEGED DEFECT IN THE PRODUCT DOES NOT EXIST OR WAS CAUSED BY CUSTOMER'S OR ANY THIRD PERSON'S MISUSE, NEGLIGENCE, IMPROPER INSTALLATION OR TESTING, UNAUTHORIZED ATTEMPTS TO REPAIR OR MODIFY, OR ANY OTHER CAUSE BEYOND THE RANGE OF THE INTENDED USE, OR BY ACCIDENT, FIRE, LIGHTNING, OR OTHER HAZARD.

LIMITATION OF LIABILITY: TO THE FULL EXTENT ALLOWED BY LAW TRENDNET ALSO EXCLUDES FOR ITSELF AND ITS SUPPLIERS ANY LIABILITY, WHETHER BASED IN CONTRACT OR TORT (INCLUDING NEGLIGENCE), FOR INCIDENTAL, CONSEQUENTIAL, INDIRECT, SPECIAL, OR PUNITIVE DAMAGES OF ANY KIND, OR FOR LOSS OF REVENUE OR PROFITS, LOSS OF BUSINESS, LOSS OF INFORMATION OR DATE, OR OTHER FINANCIAL LOSS ARISING OUT OF OR IN CONNECTION WITH THE SALE, INSTALLATION, MAINTENANCE, USE, PERFORMANCE, FAILURE, OR INTERRUPTION OF THE POSSIBILITY OF SUCH DAMAGES, AND LIMITS ITS LIABILITY TO REPAIR, REPLACEMENT, OR REFUND OF THE PURCHASE PRICE PAID, AT TRENDNET'S OPTION. THIS DISCLAIMER OF LIABILITY FOR DAMAGES WILL NOT BE AFFECTED IF ANY REMEDY PROVIDED HEREIN SHALL FAIL OF ITS ESSENTIAL PURPOSE.

**Governing Law:** This Limited Warranty shall be governed by the laws of the state of California.

Some TRENDnet products include software code written by third party developers. These codes are subject to the GNU General Public License ("GPL") or GNU Lesser General Public License ("LGPL").

Go to <http://www.trendnet.com/gpl> or <http://www.trendnet.com> Download section and look for the desired TRENDnet product to access to the GPL Code or LGPL Code. These codes are distributed WITHOUT WARRANTY and are subject to the copyrights of the developers. TRENDnet does not provide technical support for these codes. Please go to <http://www.gnu.org/licenses/gpl.txt> or <http://www.gnu.org/licenses/lgpl.txt> for specific terms of each license.



## Product Warranty Registration

Please take a moment to register your product online.  
Go to TRENDnet's website at <http://www.trendnet.com/register>

TRENDnet  
20675 Manhattan Place  
Torrance, CA 90501. USA