



300Mbps Wireless N Home Router with USB Port

TEW-652BRU

- Quick Installation Guide (1)

1. Before You Start

Package Contents

- TEW-652BRU
- Multi-Language Quick Installation Guide
- CD-ROM (Utility and User's Guide)
- Network cable (1.5 m / 5 ft.)
- Power adapter (5V DC, 2A)

Minimum Requirements

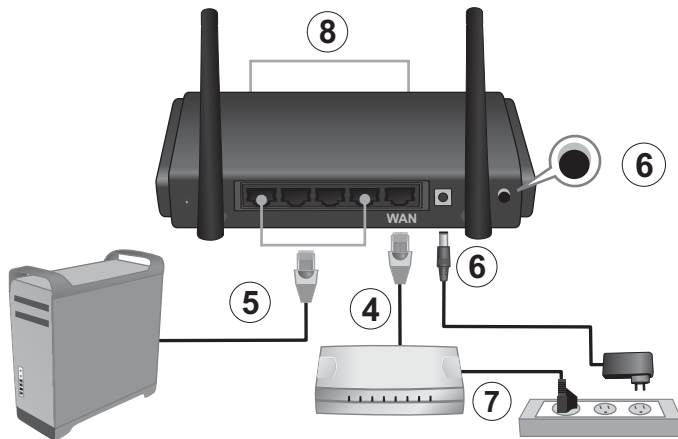
- Computer with an Ethernet port and Web browser
- Broadband Internet
- Installed modem

USB Port Software Utility Requirements

Supported Operating Systems	CPU	Memory
Windows 7 (32/64-bit)	1GHz or above	1GB RAM or above
Windows Vista (32/64-bit)	800MHz or above	512MB RAM or above
Windows XP (32/64-bit)	300MHz or above	256MB RAM or above
Mac OS X (10.7)	1.06GHz or above	2GB RAM or above
Mac OS X (10.6)	1.06GHz or above	1GB RAM or above
Mac OS X (10.5)	867MHz or above	512MB RAM or above
Mac OS X (10.4)	333MHz or above	256MB RAM or above

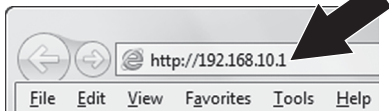
2. Installation

1. Verify that you have an Internet connection.
2. Power down your modem.
3. Disconnect the network cable from your modem and your computer.
4. Connect your modem to the TEW-652BRU's WAN port.
5. Connect your computer to one of the TEW-652BRU's LAN ports.



6. Connect the power adapter to the TEW-652BRU and then to a power outlet. Push the power button to the "On" position.
7. Power on your modem. Wait until the LEDs indicate that modem is fully booted up. For more information on your modem's LEDs, please consult with your modem's User's Guide.
8. Verify that the status LED indicators on the front of the router to confirm that the device is fully functional (**Power** is solid green, **Status** is blinking green, **WAN** and **WLAN** (Wireless) are solid green, and the **LAN** port for which your computer is connected is solid green).

9. Open your web browser, type **http://192.168.10.1** in the Address bar, and then press **Enter**.



10. Enter the **User Name** and **Password** and then click **OK**. By default:

User Name: admin

Password: admin

Note: User Name and Password are case sensitive.

11. The **Wizard** will automatically appear. If the Wizard does not automatically appear, click the **Wizard** button on the bottom left side of your screen.



12. Follow the setup Wizard's instructions and then click **Restart**.

Note:

- To protect your network from unauthorized access it is recommended to enable wireless encryption. Please refer to the User's Guide on the CD-ROM for information on setting up encryption.
- Once encryption is enabled on the router, make sure your encryption key is in a safe location. The router now prompts users to input the encryption key when connecting for the first time.

13. Open up your browser and enter in a URL (e.g. www.trendnet.com) to verify that you have Internet connection.

Note: For instructions on using your USB device with the TEW-652BRU, please refer to the User's Guide on the provided CD-ROM.

Wireless router installation is now complete

For detailed information regarding the **TEW-652BRU**'s configuration and advanced settings, please refer to the User's Guide included on the CD-ROM, or TRENDnet's website at <http://www.trendnet.com>.

Declaration of Conformity



Company Information:

Company Name:
TRENDnet, Inc.

Company Address:
20675 Manhattan Place
Torrance, CA 90501
USA

Product Information:

Product Description:
300Mbps Wireless N Home Router with USB Port



Model Number:
TEW-652BRU

Brand name:
TRENDnet

Technical Standards:

EN 300 328 V1.7.1: 10-2006
EN 301 489-1 V1.8.1: 04-2008
EN 301 489-17 V2.1.1: 05-2009
EN 50385 : 2002
EN 60950-1: 2006 + A11 : 2009 + A1 : 2010

Declaration:

The product is herewith confirmed to comply with the requirements of Directive 1999/5/EC of the Council (European Parliament) on the radio and telecommunications terminal equipment and Energy-related products Directive 2009/125/EC.

I hereby declare that the products and devices mentioned above are consistent with the standards and provisions of the guidelines.

Sonny Su

Full Name

September 27, 2011

Date

Director of Technology

Position / Title

Signature



Product Warranty Registration

Please take a moment to register your product online.
Go to TRENDnet's website at <http://www.trendnet.com/register>

Certifications

This equipment has been tested and found to comply with FCC and CE Rules.
Operation is subject to the following two conditions:

- (1) This device may not cause harmful interference.
- (2) This device must accept any interference received. Including interference that may cause undesired operation.



Waste electrical and electronic products must not be disposed of with household waste. Please recycle where facilities exist. Check with you Local Authority or Retailer for recycling advice.



NOTE: THE MANUFACTURER IS NOT RESPONSIBLE FOR ANY RADIO OR TV INTERFERENCE CAUSED BY UNAUTHORIZED MODIFICATIONS TO THIS EQUIPMENT. SUCH MODIFICATIONS COULD VOID THE USER'S AUTHORITY TO OPERATE THE EQUIPMENT.

ADVERTENCIA

En todos nuestros equipos se mencionan claramente las características del adaptador de alimentación necesario para su funcionamiento. El uso de un adaptador distinto al mencionado puede producir daños físicos y/o daños al equipo conectado. El adaptador de alimentación debe operar con voltaje y frecuencia de la energía eléctrica domiciliar existente en el país o zona de instalación.

TRENDnet
20675 Manhattan Place
Torrance, CA 90501. USA