






Quick Installation Guide  

Ghid de instalare in limba romana 

TEW-651BR  
1.04

# Table of Contents

English	1
1. Before You Start	1
2. Hardware Installation	2
3. Configure the Wireless Router	3
Româna	6
1. Înainte de a începe	6
2. Instalarea hardware	7
3. Configurarea Routerului Wireless	8
Troubleshooting	11
Depistarea Problemelor	13
Wireless Tips	15



## Package Contents

- TEW-651BR
- User's Guide CD-ROM
- Multi-Language Quick Installation Guide
- Cat. 5 Ethernet Cable (1.5m/4.9ft)
- AC Power Adapter (5V DC, 1.2A)

## System Requirements

- A computer with a wired or wireless network adapter properly installed
- Web Browser: Internet Explorer (5.0 or higher)
- Broadband Internet
- Installed Cable or DSL Modem

## 2. Hardware Installation

**Note:** Gather all information related to your Internet Connection before you start. If necessary, contact your Internet Service Provider (ISP).

1. Verify that you have an Internet connection when connecting your computer directly to the Cable or DSL modem. Open your browser (e.g. Internet Explorer) and type in a URL (e.g. <http://www.trendnet.com>) in the address bar.

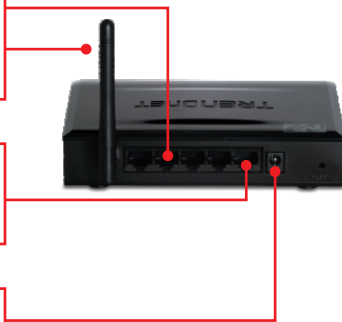


2. Connect one end of a RJ-45 cable to one of the TEW-651BR's LAN ports. Connect the other end of the cable to the computer's Ethernet port.

3. Connect one end of a RJ-45 cable to the TEW-651BR's WAN port. Connect the other end of the cable to your modem.

4. Connect the AC Power Adapter to the wireless router and then to a power outlet.

5. Verify that the following panel lights are on:  
Power, LAN, WAN and WLAN.



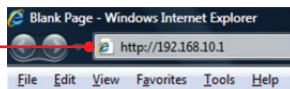
### 3. Configure the Wireless Router

ENGLISH

ROMÂNĂ

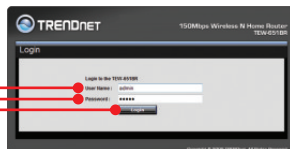
Note: It is recommended that you configure the Wireless Router from a wired computer.

1. Open your web browser, type `http://192.168.10.1` in the Address bar, and then press Enter.

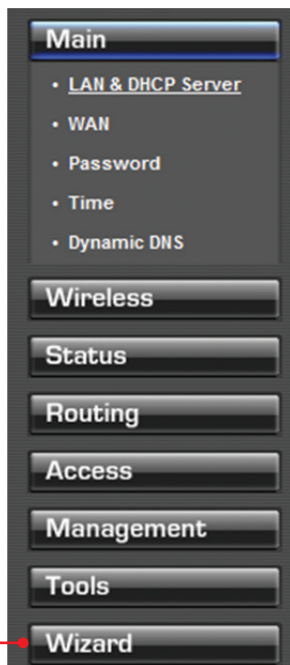


2. Enter the User Name and Password, and then click Log In.

User Name: admin  
Password: admin



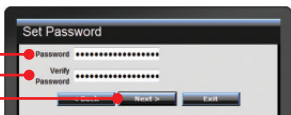
3. The Wizard will automatically appear. Click Wizard if the Wizard does not automatically appear.



4. Click Next.



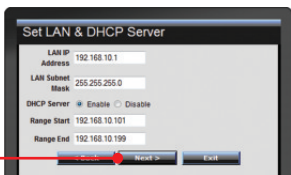
5. Enter a Password, verify the Password and then click Next. By default, the Password is admin.



6. Select your Time Zone and then click Next.

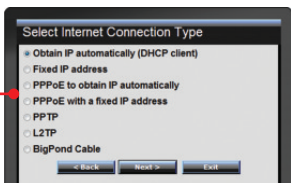


7. Click Next. Note: Do not change default settings unless it is conflicting with your existing hardware.



8. Configure the settings based on information provided by your ISP. Follow the wizard instructions to complete the configuration.

Note: Each Internet Connection type may have different options.

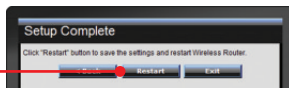


9. Click Next.

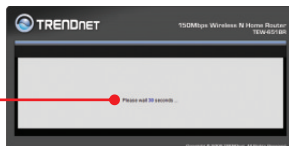


Note: It is recommended that you enable encryption on the wireless router. Please refer to the User Guide on the User's Guide CD-ROM for information on setting up encryption on the wireless router.

10. Click Restart.



11. Wait 30 seconds while the router reboots.



12. Open up your browser and enter in a URL (e.g. [www.trendnet.com](http://www.trendnet.com)) to verify that you have Internet connection.



## Your configuration is now complete

For detailed information regarding the TEW-651BR configuration and advanced settings, please refer to User's Guide included on the Utility CD-ROM, or TRENDnet's website at <http://www.trendnet.com>.

## Register Your Product

To ensure the highest level of customer service and support, please take a moment to register your product Online at: [www.trendnet.com/register](http://www.trendnet.com/register)

Thank you for choosing TRENDnet



## Conținutul pachetului

- TEW-651BR
- CD-ROM cu Ghidul Utilizatorului
- Ghid de instalare rapid multi-lingv
- Cablu Ethernet Cat. 5 (1.5m/5ft)
- Adaptor curent (5V DC, 1.2A)

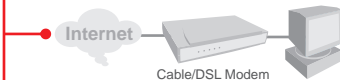
## Cerinte privind instalarea

- Un calculator cu adaptor de rețea cu cablu sau wireless instalat corect.
- Navigator Web: Internet Explorer (5.0 sau mai mare)
- Liniște de bandă pentru Internet
- Cablu instalat sau modem DSL



**Notă:** Înainte de a începe adunați toate informațiile cu privire la Conectarea la Internet. Dacă este nevoie, contactați Furnizorul dvs. de Servicii Internet (FSI).

1. Verificați dacă aveți legătură la Internet atunci când conectați calculatorul direct la Cablu sau modem DSL. Deschideți navigatorul (ex.: Internet Explorer) și tastați în bara de adrese un URL (ex.: <http://www.trendnet.com>)

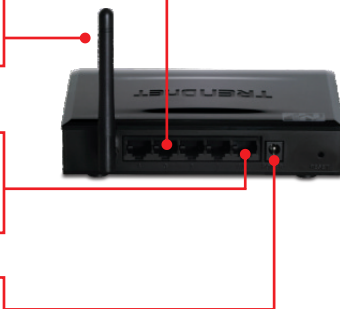


2. Conectați un capăt al cablului RJ-45 la unul dintre porturile LAN TEW-652BRP. Conectați celălalt capăt la portul Ethernet al calculatorului.

3. Conectați un capăt al cablului RJ-45 la portul WAN al TEW-652BRP. Conectați celălalt capăt al cablului la modem.

4. Conectați Adaptorul de curent CA la router-ul wireless și apoi la o priză de curent.

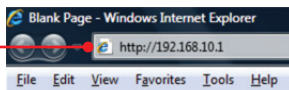
5. Verificați dacă sunt aprinse pe panou luminile: Power, LAN și WAN.



### 3. Configurarea Routerului Wireless

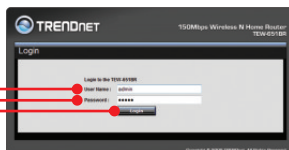
Not : Se recomand efectuarea configurării Routerului Wireless de la un calculator conectat la cablu de rețea.

1. Deschideți navigatorul, tastați în bara de adrese `http://192.168.10.1`, și apăsați pe Enter.

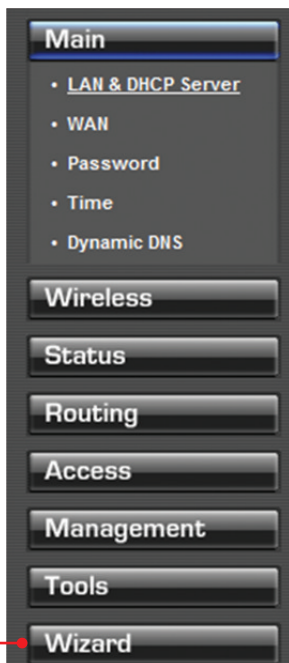


2. Introduceți Numele Utilizatorului și Parola, apoi dați clic pe Log In.

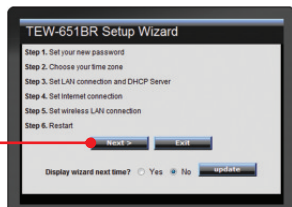
Numele Utilizatorului: admin  
Parola: admin



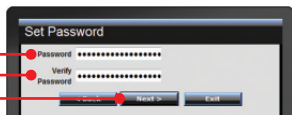
3. Wizard va apărea automat. Dacă acesta nu apare automat.



4. Da i clic pe Next.



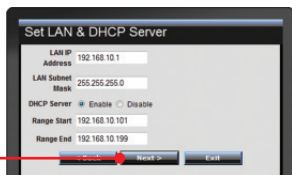
5. Introduce i o Parol , verifica i Parola i da i clic apoi pe Next. În lipsa altei Parole, aceasta va fi admin.



6. Selecta i ora zonei dvs i da i apoi clic pe Next.

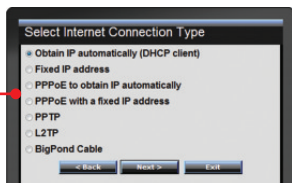


7. Da i clic pe Next. Not : Nu modifica i set rile existente dac acestea nu deranjeaz hardware.



8. Configura i set rile în baza informa iilor primite de la FSI-ul dvs. Pentru terminarea configur rii urma i instruc iunile Wizard.

Not : Fiecare tip de leg tur Internet poate avea op iuni diferite.

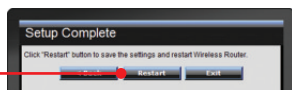


9. Da i clic pe Next.

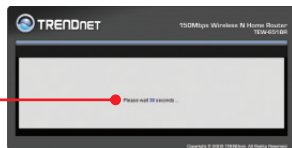


Not : Este recomandat să activați și opriți de criptare a routerului wireless. Vă rugăm să consultați Ghidul utilizatorului aflat pe CD-ROM-ul pentru informații cu privire la setările de criptare ale routerului wireless.

10. Dați clic pe Restart.



11. Așteptați 30 de secunde până când routerul se repornește.



12. Deschideți navigatorul de internet și introduceți o adresă de pagină WEB (ex. [www.trendnet.com](http://www.trendnet.com)) pentru a verifica dacă aveți o conexiune internet stabilă.



## Configurația fir este acum completă !

Pentru informații detaliate privind configurarea și setările avansate ale TEW-651BR, vă rugăm să consultați capitolul „Depistarea problemelor”, CD-ROM cu Ghidul Utilizatorului sau accesați pagina web a TRENDnet la: <http://www.trendnet.com>.

## Inregistrați-vă produsul

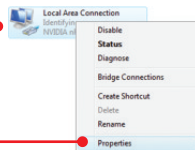
Pentru a vă asigura că veți primi cel mai ridicat nivel de suport, vă rugăm să vă înregistrați electronic produsul la [www.trendnet.com/register](http://www.trendnet.com/register). Vă mulțumim pentru că ați ales TRENDnet.

1. I typed `http://192.168.10.1` in my Internet Browser's Address Bar, but an error message says "The page cannot be displayed." How can I get into the TEW-651BR's web configuration page?

1. Check your hardware settings again by following the instructions in Section 2.
2. Make sure the LAN and WLAN lights are lit.
3. Make sure your TCP/IP settings are set to Obtain an IP address automatically (see the steps below).
4. Press on the factory reset button for 15 seconds.

## Windows 7

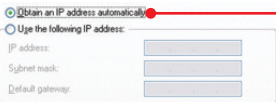
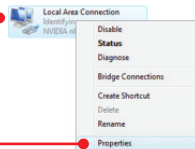
1. Go into the Control Panel, click Network and Sharing Center, click Change Adapter Settings and then right-click the Local Area Connection icon and then click Properties.



2. Click Internet Protocol Version 4(TCP/IPv4) and then click Properties. Then click on Obtain an IP address automatically.

## Windows Vista

1. Go into the Control Panel, click Network and Internet, click Network and Sharing Center and then right-click the Local Area Connection icon and then click Properties.



2. Click Internet Protocol Version 4(TCP/IPv4) and then click Properties. Then click on Obtain an IP address automatically.

1. Go into the Control Panel, double-click the Network Connections icon and then right-click the Local Area Connection icon and then click Properties.



2. Click Internet Protocol (TCP/IP) and then click Properties. Then click on Obtain an IP address automatically.

2. I am not sure what type of Internet Account Type I have for my Cable/DSL connection. How do I find out?

Contact your Internet Service Provider's (ISP) support service for the correct information.

3. The Wizard does not appear. What should I do?

1. Click on Wizard on the left hand side.
2. Near the top of the browser, "Pop-up blocked" message may appear. Right click on the message and select Always Allow Pop-ups from This Site.
3. Disable your browser's pop up blocker.

4. I went through the Wizard, but I can not get onto the Internet. What should I do?

1. Verify that you can get onto the Internet with a direct connection into your modem.
2. Contact your ISP and verify all the information that you have in regards to your Internet connection settings is correct.
3. Power cycle your modem and router. Unplug the power to the modem and router. Wait 30 seconds, and then reconnect the power to the modem. Wait for the modem to fully boot up, and then reconnect the power to the router.

5. I cannot make a wireless connection to the Router. What should I do?

1. Double check that the WLAN light on the Router is lit.
2. Power cycle the TEW-651BR. Unplug the power to the TEW-651BR. Wait 15 seconds, then plug the power back in to the TEW-651BR.
3. Contact the manufacturer of your wireless network adapter and make sure the wireless network adapter is configured with the proper SSID. The preset SSID is TRENDnet651.

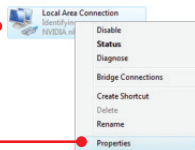
If you still encounter problems or have any questions regarding the TEW-651BR, please contact TRENDnet's Technical Support Department.

Am tastat: `http://192.168.10.1` in bara de adrese a navigatorului Internet dar apare mesajul de eroare: "Pagina nu poate fi afișată." Cum pot intra în pagina web de configurare a TEW-652BRP?

1. Verifica și mai întâi setările pentru hardware urmând instrucțiunile de la Capitolul 2.
2. Asigurați-vă că sunt aprinse luminile de la LAN și WLAN.
3. Asigurați-vă că setările TCP/IP sunt efectuate pentru „Obtain an IP address automatically” (a se vedea etapele de mai jos).
4. apăsați și timp de 15 secunde pe butonul de resetare în fabrică.

### Windows 7

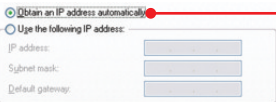
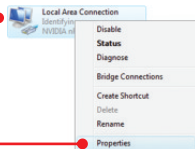
1. Mergeți la Control Panel, dați clic pe Network and Sharing Center, apoi clic pe Change Adapter Settings și clic dreapta pe icoana Local Area Connection după care dați clic pe Properties.



2. Dați clic pe Internet Protocol Version 4 (TCP/IPv4) apoi clic Properties. Dați clic apoi pe Obtain an IP address automatically.

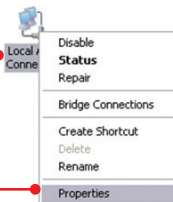
### Windows Vista

1. Deschideți Control Panel, clic pe Network and Internet, clic Network and Sharing Center, clic Manage Network Connections apoi clic dreapta pe icoana Local Area Connection și la final clic Properties.



2. Dați clic pe Internet Protocol Version 4 (TCP/IPv4) apoi clic Properties. Dați clic apoi pe Obtain an IP address automatically.

1. Merge i în Control Panel, dublu clic pe icona Network Connections, clic dreapta pe Local Area Connection i la urm clic pe Properties.



2. Da i clic pe Internet Protocol (TCP/IP) i clic pe Properties. Da i clic apoi pe Obtain an IP address automatically.

Nu tiu sigur ce tip de Cont Internet am de la leg tura la Cablu/DSL. Cum pot afla?  
Contacta i Furnizorul de Servicii Internet (FSI) care v va da informa iile de baz corecte.

Wizard nu apare. Ce ar trebui s fac?

1. Clic pe Wizard din partea stâng
2. Lâng partea de sus a navigatorului este posibil s apar mesajul "Pop-up blocked". Da i clic-dreapta pe mesaj i selecta i „Always Allow Pop-ups from This Site”.
3. Dezactiva i opritorul de apari ie a iconanelor cu mesaje de la navigator.

I Am trecut prin toate etapele de la Wizard, dar nu pot intra pe Internet. Ce ar trebui s fac?

1. Verifica i dac pute i intra pe Internet prin conectarea direct la modemul dvs.
2. Lua i leg tura cu FSI i verifica i dac toate informa iile pe care le ave i cu privire la set rile pentru conectarea la Internet sunt corecte.
3. Verifica i frecven a curentului de la modem i router. Întrerupe i alimentarea cu curent la modem i router. A tepta i 30 de secunde i reconecta i-le la curent. A tepta i ca modemul s se buteze complet i reconecta i alimentarea cu curent la router.

Nu pot efectua conectarea wireless la Router. Ce ar trebui s fac?

1. Verifica i dac lumina WLAN de la Router este aprins .
2. Verifica i frecven a curentului de la TEW-651BRP. Întrerupe i alimentarea curentului la TEW-631BRP. A tepta i 15 secunde apoi realimenta i TEW-651BRP cu curent electric.
3. Contacta i produc torul adaptorului de re ea wireless i asigura i-v c este configurat SSID corect. SSID este presetat de TRENDnet651.

Dac continua i s întâmpina i probleme sau ave i întreb ri cu privire la TEW-651BR, v rug m s consulta i Ghidul utilizatorului inclus pe Utility & Driver CD-ROM sau contactati Departamentul de Suport Tehnic TRENDnet.



The following are some general wireless tips to help minimize the impact of interference within an environment.

### Assign your network a unique SSID

Do not use anything that would be identifying like "Smith Family Network". Choose something that you would easily identify when searching for available wireless networks.

### Do not turn off the SSID broadcast

The SSID broadcast is intended to be on and turning it off can cause connectivity issues. The preferred method of securing a wireless network is to choose a strong form of encryption with a strong and varied encryption key.

**Note: after setting up the SSID, encryption type and encryption key/passphrase, please make a note of them for future reference. You will need this information to connect your wireless computers to the wireless router/access point.**

### Change the channel

Most wireless access points and routers are defaulted to channel 6. If you have a site survey tool that will display the channels you can plan your channel selection around neighboring access points to minimize interference from them. If your site survey tool does not display the channel try using channels 1 or 11.

### Change the channel bandwidth

If you are using an 802.11n router or access point you can also make the following changes. Change the channel bandwidth to 20/40MHz. This will provide the highest possible performance using an 802.11n device. Also, if using 802.11n you should be securing the network with WPA2 security.

**Note: Due to Wi-Fi certification considerations if you choose WEP, WPA or WPA2-TKIP encryption this device may operate in legacy wireless mode (802.11b/g). You may not get 802.11n performance as these forms of encryption are not supported by the 802.11n specification.**

### Avoid stacking hardware on top of each other to prevent overheating issues

Maintain enough free space around the hardware for good ventilation and airflow. There should also be plenty of free space around the antennas to allow the wireless signal to propagate. Please also make sure that the wireless hardware is not placed in any type of shelving or enclosures.

There are a number of other environmental factors that can impact the range of wireless devices.

1. Adjust your wireless devices so that the signal is traveling in a straight path, rather than at an angle. The more material the signal has to pass through the more signal you will lose.

2. Keep the number of obstructions to a minimum. Each obstruction can reduce the range of a wireless device. Position the wireless devices in a manner that will minimize the amount of obstructions between them.
3. Building materials can have a large impact on your wireless signal. In an indoor environment, try to position the wireless devices so that the signal passes through less dense material such as dry wall. Dense materials like metal, solid wood, glass or even furniture may block or degrade the signal.
4. Antenna orientation can also have a large impact on your wireless signal. Use the wireless adapter's site survey tool to determine the best antenna orientation for your wireless devices.
5. Interference from devices that produce RF (radio frequency) noise can also impact your signal. Position your wireless devices away from anything that generates RF noise, such as microwaves, HAM radios, Walkie-Talkies and baby monitors.
6. Any device operating on the 2.4GHz frequency will cause interference. Devices such as 2.4GHz cordless phones or other wireless remotes operating on the 2.4GHz frequency can potentially drop the wireless signal. Although the phone may not be in use, the base can still transmit wireless signals. Move the phone's base station as far away as possible from your wireless devices.

If you are still experiencing low or no signal consider repositioning the wireless devices or installing additional access points. The use of higher gain antennas may also provide the necessary coverage depending on the environment.

## GPL/LGPL General Information

This TRENDnet product includes free software written by third party developers. These codes are subject to the GNU General Public License ("GPL") or GNU Lesser General Public License ("LGPL"). These codes are distributed WITHOUT WARRANTY and are subject to the copyrights of the developers. TRENDnet does not provide technical support for these codes. The details of the GNU GPL and LGPL are included in the product CD-ROM.

Please also go to (<http://www.gnu.org/licenses/gpl.txt>) or (<http://www.gnu.org/licenses/lgpl.txt>) for specific terms of each license.

The source codes are available for download from TRENDnet's web site ([http://trendnet.com/downloads/list\\_gpl.asp](http://trendnet.com/downloads/list_gpl.asp)) for at least three years from the product shipping date.

You could also request the source codes by contacting TRENDnet.

20675 Manhattan Place, Torrance, CA 90501, USA. Tel: +1-310-961-5500 Fax: +1-310-961-5511

### Informations générales GPL/LGPL

Ce produit TRENDnet comprend un logiciel libre écrit par des programmeurs tiers. Ces codes sont sujet à la GNU General Public License ("GPL" Licence publique générale GNU) ou à la GNU Lesser General Public License ("LGPL" Licence publique générale limitée GNU). Ces codes sont distribués SANS GARANTIE et sont sujets aux droits d'auteurs des programmeurs. TRENDnet ne fournit pas d'assistance technique pour ces codes. Les détails concernant les GPL et LGPL GNU sont repris sur le CD-ROM du produit.

Veuillez également vous rendre en (<http://www.gnu.org/licenses/gpl.txt>) ou en (<http://www.gnu.org/licenses/lgpl.txt>) pour les conditions spécifiques de chaque licence.

Les codes source sont disponibles au téléchargement sur le site Internet de TRENDnet web site ([http://trendnet.com/downloads/list\\_gpl.asp](http://trendnet.com/downloads/list_gpl.asp)) durant au moins 3 ans à partir de la date d'expédition du produit.

Vous pouvez également demander les codes source en contactant TRENDnet.

20675 Manhattan Place, Torrance, CA 90501, USA. Tel: +1-310-961-5500 Fax: +1-310-961-5511

### Allgemeine Informationen zu GPL/LGPL

Dieses Produkt enthält die freie Software "netfilter/iptables" (© 2000-2004 netfilter project <http://www.netfilter.org>) und die freie Software „Linux „mtd“ (Memory Technology Devices) Implementation (© 2000 David Woodhouse), erstmals integriert in Linux Version 2.4.0-test 3 v. 10.07.2000 (<http://www.kernel.org/pub/linux/kernel/v2.4/old-test-kernels/linux-2.4.0-test3.tar.bz2>), sowie weitere freie Software. Sie haben durch den Erwerb dieses Produktes keinerlei Gewährleistungsansprüche gegen die Berechtigten an der oben genannten Software erworben; weil diese die Software kostenfrei lizenzieren gewähren sie keine Haftung gemäß unten abgedruckten Lizenzbedingungen. Die Software darf von jedermann im Quell- und Objektcode unter Beachtung der Lizenzbedingungen der GNU General Public License Version 2, und GNU Lesser General Public License (LGPL) vervielfältigt, verbreitet und verarbeitet werden. Die Lizenz ist unten im englischsprachigen Originalwortlaut wiedergegeben. Eine nichtoffizielle Übersetzung in die deutsche Sprache finden Sie im Internet unter (<http://www.gnu.de/documents/gpl-2.0.de.html>). Eine allgemeine öffentliche GNU Lizenz befindet sich auch auf der mitgelieferten CD-ROM.

Sie können Quell- und Objektcode der Software für mindestens drei Jahre auf unserer Homepage [www.trendnet.com](http://www.trendnet.com) im Downloadbereich ([http://trendnet.com/langen/downloads/list\\_gpl.asp](http://trendnet.com/langen/downloads/list_gpl.asp)) downloadend. Sofern Sie nicht über die Möglichkeit des Downloads verfügen können Sie bei TRENDnet.

20675 Manhattan Place, Torrance, CA 90501 - U.S.A. -, Tel.: +1-310-961-5500, Fax: +1-310-961-5511 die Software anfordern.

### Información general sobre la GPL/LGPL

Este producto de TRENDnet incluye un programa gratuito desarrollado por terceros. Estos códigos están sujetos a la Licencia pública general de GNU ("GPL") o la Licencia pública general limitada de GNU ("LGPL"). Estos códigos son distribuidos SIN GARANTÍA y están sujetos a las leyes de propiedad intelectual de sus desarrolladores. TRENDnet no ofrece servicio técnico para estos códigos. Los detalles sobre las licencias GPL y LGPL de GNU se incluyen en el CD-ROM del producto.

Consulte también el (<http://www.gnu.org/licenses/gpl.txt>) o el (<http://www.gnu.org/licenses/lgpl.txt>) para ver las cláusulas específicas de cada licencia.

Los códigos fuentes están disponibles para ser descargados del sitio Web de TRENDnet

([http://trendnet.com/downloads/list\\_gpl.asp](http://trendnet.com/downloads/list_gpl.asp)) durante por lo menos tres años a partir de la fecha de envío del producto.

También puede solicitar el código fuente llamando a TRENDnet.

20675 Manhattan Place, Torrance, CA 90501, USA. Tel: +1-310-961-5500 Fax: +1-310-961-5511

### GPL/LGPL

TRENDnet

GNU General Public License ("GPL") GNU

Lesser General Public License ("LGPL").

TRENDnet

GNU GPL LGPL

(<http://www.gnu.org/licenses/gpl.txt>) (<http://www.gnu.org/licenses/lgpl.txt>)

TRENDnet ([http://trendnet.com/downloads/list\\_gpl.asp](http://trendnet.com/downloads/list_gpl.asp))

TRENDnet.

20675 Manhattan Place, Torrance, CA 90501, USA. Tel: +1-310-961-5500 Fax: +1-310-961-5511

#### GPL/LGPL informações Gerais

Este produto TRENDnet inclui software gratuito desenvolvido por terceiros. Estes códigos estão sujeitos ao GPL (GNU General Public License) ou ao LGPL (GNU Lesser General Public License). Estes códigos são distribuídos SEM GARANTIA e estão sujeitos aos direitos autorais dos desenvolvedores. TRENDnet não presta suporte técnico a estes códigos. Os detalhes do GNU GPL e do LGPL estão no CD-ROM do produto.

Favor acessar <http://www.gnu.org/licenses/gpl.txt> ou <http://www.gnu.org/licenses/lgpl.txt> para os termos específicos de cada licença.

Os códigos fonte estão disponíveis para download no site da TRENDnet ([http://trendnet.com/langen/downloads/list\\_gpl.asp](http://trendnet.com/langen/downloads/list_gpl.asp)) por pelo menos três anos da data de embarque do produto.

Você também pode solicitar os códigos fonte contactando TRENDnet, 20675 Manhattan Place, Torrance, CA 90501, USA. Tel: +1-310-961-5500, Fax: +1-310-961-5511.

#### GPL/LGPL üldinformatsioon

See TRENDneti toode sisaldab vaba tarkvara, mis on kirjutatud kolmanda osapoole poolt. Koodid on allutatud GNU (General Public License) Üldise Avaliku Litsentsi (GPL) või GNU (Lesser General Public License) ("LGPL") Vähem Üldine Avalik Litsentsiga. Koode vahendatakse ILMA GARANTIITA ja need on allutatud arendajate poolt. TRENDnet ei anna koodidele tehnilist tuge. Detailsemat infot GNU GPL ja LGPL kohta leiate toote CD-ROMil. Infot mõlema litsentsi spetsiifiliste terminite kohta leiate (<http://www.gnu.org/licenses/gpl.txt>) või (<http://www.gnu.org/licenses/lgpl.txt>).

Infot mõlema litsentsi spetsiifiliste terminite kohta leiate (<http://www.gnu.org/licenses/gpl.txt>) või (<http://www.gnu.org/licenses/lgpl.txt>). Lähtekoodi on võimalik alla laadida TRENDneti kodulehelt

([http://trendnet.com/langen/downloads/list\\_gpl.asp](http://trendnet.com/langen/downloads/list_gpl.asp)) kolme aasta jooksul alates toote kättesaamise kuupäevast.

Samuti võite lähtekoodi paluda TRENDneti'lt, 20675 Manhattan Place, Torrance, CA 90501, USA. Tel: +1-310-961-5500, Fax: +1-310-961-5511.

## Certifications

This equipment has been tested and found to comply with FCC and CE Rules.

Operation is subject to the following two conditions:

- (1) This device may not cause harmful interference.
- (2) This device must accept any interference received. Including interference that may cause undesired operation.



1329-10-2375

Este equipamento opera em caráter secundário, isto é, não tem direito a proteção contra interferência prejudicial, mesmo de estações do mesmo tipo, e não pode causar interferência a sistemas operando em caráter primário



Waste electrical and electronic products must not be disposed of with household waste. Please recycle where facilities exist. Check with you Local Authority or Retailer for recycling advice.



**NOTE:** THE MANUFACTURER IS NOT RESPONSIBLE FOR ANY RADIO OR TV INTERFERENCE CAUSED BY UNAUTHORIZED MODIFICATIONS TO THIS EQUIPMENT. SUCH MODIFICATIONS COULD VOID THE USER'S AUTHORITY TO OPERATE THE EQUIPMENT.

## ADVERTENCIA

En todos nuestros equipos se mencionan claramente las características del adaptador de alimentación necesario para su funcionamiento. El uso de un adaptador distinto al mencionado puede producir daños físicos y/o daños al equipo conectado. El adaptador de alimentación debe operar con voltaje y frecuencia de la energía eléctrica domiciliar existente en el país o zona de instalación.



## Product Warranty Registration

Please take a moment to register your product online.  
Go to TRENDnet's website at <http://www.trendnet.com/register>