



9dBi High Power Wireless Outdoor PoE Access Point

TEW-455APBO

The 9dBi High Power Wireless Outdoor PoE Bridge/Access Point provides secure Super G (108Mbps) wireless bridging in a durable all-weather outdoor enclosure. This self-contained product comes with a built-in directional antenna for professional long distance wireless bridging applications. External antenna can also be used for more challenging extended range projects. Power is supplied through included Power over Ethernet injector, resulting in equipment and installation cost savings.

Support for the latest wireless security protocols ensures the highest level of network protection. A rugged UV-resistant aluminum housing (with mounting brackets), features an IP65 waterproof rating and delivers optimal performance in extreme weather conditions. Remote network management using built-in web interface or SNMP makes this product an ideal solution for rapid wireless network implementation.

FEATURES

- Features Super G technology with data rates up to 108Mbps
- Device powered by an Ethernet cable with Power over Ethernet (PoE) technology
- Rugged waterproof aluminum housing and built-in antenna for extreme weather conditions
- Wireless Super G compatible Access Point with Bridge and Repeater modes
- Add additional high-gain antenna for extended range projects
- Advanced wireless security with 64/128/152-bit WEP (Wired Equivalent Privacy) & WPA (Wi-Fi Protected Access)
- Provides SSID Broadcast enable/disable controls & 802.1x Authentication Protocol support
- Feature rich device supports IPSec, PPTP, and L2TP VPN pass-through
- Flash memory allows firmware upgrades, save/restore settings
- Compatible with Windows 95/98/ME/2000/XP/Vista, Linux and Mac OS
- Range of 802.11b @ 19dBm up to 5 km in Bridge (2 x 9dBi) **
- Range of 802.11g @ 19dBm up to 2 km in Bridge (2 x 9dBi) **
- 3-year warranty

9dBi High Power Wireless Outdoor PoE Access Point

TEW-455APBO

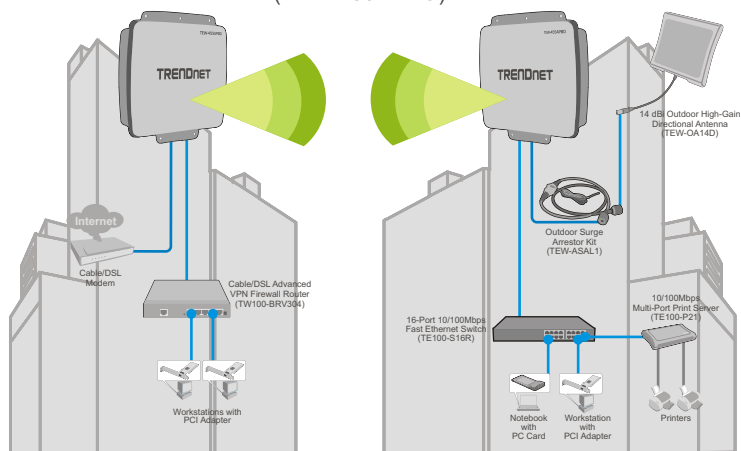
SPECIFICATIONS

Hardware	
Standards	<ul style="list-style-type: none">Wired: IEEE 802.3 (10Base-T), and IEEE 802.3u (100Base-TX)Wireless: IEEE 802.11g
LED Indicator	<ul style="list-style-type: none">Power, WLAN (Wireless activity)
Antenna	<ul style="list-style-type: none">Built-in 9dBi Patch Antenna, Polarization, V45° H45°
PoE	<ul style="list-style-type: none">RJ-45 Connector for Data & PoE Support
EXT (50ohm)	<ul style="list-style-type: none">N-Type Female connector (TEW-ASAL1 is required for use with TRENDnet high gain antennas)
Dimension (L x W x H)	<ul style="list-style-type: none">250 x 260 x 80 mm (9.8 x 10 x 3.1 inches)
Weight	<ul style="list-style-type: none">1.6kg (3.5 lbs)
Power Consumption	<ul style="list-style-type: none">7 Watts (Max.)
Management	<ul style="list-style-type: none">Web browser (Http), SNMP, Telnet
Wind Speed Support	<ul style="list-style-type: none">120km/h
Waterproof	<ul style="list-style-type: none">IP66 Compliant
Temperature	<ul style="list-style-type: none">30°~ 65°C (-22°F~ 149°F)
Humidity	<ul style="list-style-type: none">Max. 95% (Non-Condensing)
Power	<ul style="list-style-type: none">PoE Injector & Power Cord Included
Certification	<ul style="list-style-type: none">CE, FCC
Wireless	
Frequency	<ul style="list-style-type: none">2.400 to 2.4835GHz (Industrial Scientific Medical Band)
Module Technique	<ul style="list-style-type: none">802.11b: CCK (11 and 5.5Mbps), DQPSK (2Mbps), DBPSK (1Mbps) • 802.11g: OFDM, 16/64-QAM
Media Access Protocol	<ul style="list-style-type: none">CSMA/CA with ACK
Data Rate (auto-fallback)	<ul style="list-style-type: none">802.11b: 11Mbps, 5Mbps, 2Mbps and 1Mbps • 802.11g: 108Mbps, 54Mbps, 48Mbps, 36Mbps, 24Mbps, 12Mbps and 6Mbps
Security	<ul style="list-style-type: none">64/128/152-bit WEP (HEX/ASCII), WPA-PSK (AES/TKIP) for AP/Bridge, WPA (AES / TKIP) for AP onlyEnable/Disable SSID Broadcast, MAC Address Filtering, VPN Pass-Through
Output Power	<ul style="list-style-type: none">19dBm±1max. (Adjustable)
Receiving Sensitivity	<ul style="list-style-type: none">802.11b: -87dBm (typical) @ 11mpbs802.11g: -73dBm (typical) @ 54Mbps
Channels	<ul style="list-style-type: none">1~11 channel (US), 1~13 channel (EU)

9dBi High Power Wireless Outdoor PoE Access Point TEW-455APBO

OUTDOOR ARRESTOR SOLUTION

9dBi High Power Wireless Outdoor PoE Access Point (TEW-455APBO)



**** Effective wireless coverage may vary depending on the wireless device's output power, antenna gain, antenna alignment, receiving sensitivity and radio interference. For optimal results, we recommended that you consult a professional installer for site survey, safety precautions and proper installation**

PACKAGE CONTENTS

- TEW-455APBO outdoor AP
- Mounting brackets
- PoE injector & Power cord
- Multi-language quick installation guide
- CD-ROM (utility & user's guide)
- Water-proof RJ45 plug (Ethernet cable not included)
- Grounding wire

RELATED PRODUCTS

TEW-ASAL1	Outdoor Lightning Arrestor Kit (For TEW-455APBO)
TEW-AO14D	14 dBi Outdoor High-Gain Directional Antenna
TEW-AO19D	19 dBi Outdoor High-Gain Directional Antenna
TEW-OA24D	24dBi Outdoor Directional Antenna

ORDERING INFORMATION

TRENDnet[®]

20675 Manhattan Place, Torrance, CA 90501 USA

Tel: 1-310-961-5500

Fax: 1-310-961-5511

Web: www.trendnet.com

Email: sales@trendnet.com

To Order Please Call:

1-888-326-6061

