

TEW-453APB

Lühike paigaldusjuhend

Version 10.12.05



TRENDnet

Sisukord

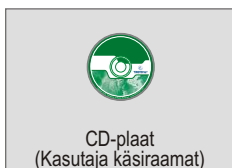
Eesti	1
1. Paigalduseks valmistumine	1
2. Riistvara paigaldamine	2
3. TCP/IP parameetrite seadistamine	3
4. Accesspindi seadistamine	6
Troubleshooting.....	8

1. Paigalduseks valmistumine

Täname sind TRENDnet TEW-453APB WiFi accesspointi ostmise eest. See juhend aitab sul seadistada accesspointi kiiresti ja lihtsalt. Järgi ainult juhiseid ja naudi juhtmevaba interneti eeliseid. Kui sul tekib probleeme, loe "Probleemide lahendamise" peatükki. Kui vajad täiendavat tehnilist tuge, külasta veebisaiti www.trendnet.com või võta ühendust tehnilise toega telefoni teel.

Kontrolli pakendi sisu

Palun veendu, et karbis on kõik osad:



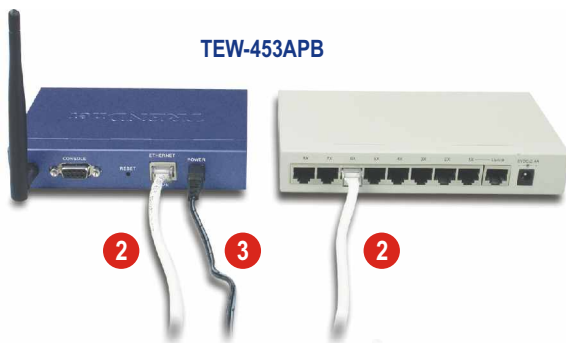
Kontrolli seadmeid

Enne accesspointi paigaldamist peaks sul olema:

1. Arvuti kaablipõhise (RJ-45) või WiFi võrgukaardiga
2. Arvutisse paigaldatud TCP/IP protokoll
3. Veebibrauser nagu Internet Explorer (5.0 või uuem) või Netscape Navigator (4.7 või uuem)
4. Hub või switch, millega on ühendatud olemasolev kaablivõrk
5. RJ-45 võrgukaabel accesspointi ühendamiseks switchiga

2. Riistvara paigaldamine

1. Leia accesspointile sobiv koht. Parim koht accesspointi jaoks on tavaliselt sinu traadita võrgu leviala keskel.
2. Ühenda RJ-45 võrgukaabel accesspointiga, seejärel ühenda võrgukaabli teine ots switchi või hubiga. Accesspoint on nüüd ühendatud sinu 10/100 Mbps kohtvõrguga.
3. Ühenda toiteadapter accesspointiga. Kasuta accesspointiga komplektis olevat adapterit. Teiste adapterite kasutamine võib seadet kahjustada.



Märkus: kui sa kasutad accesspointi seadistamiseks kaabliühendusega arvutit, ühenda see arvuti sama switchi või hubi külge, kuhu on ühendatud TEW-453APB.



Kontrolli riistvara paigaldust

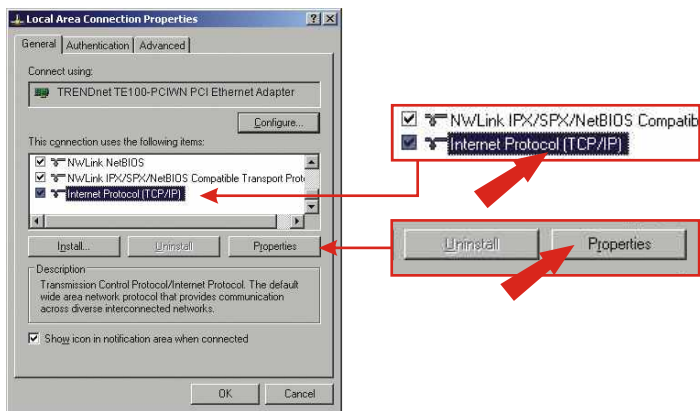
Veendu, et põlevad järgmised esipaneeli tuled: Power, LAN, Wireless.

3. TCP/IP parameetrite seadistamine

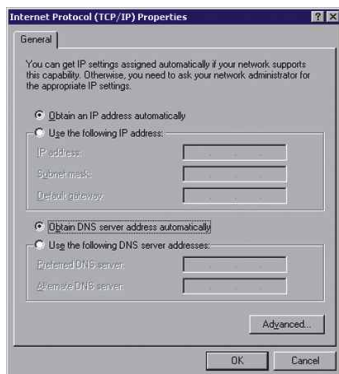
Enne, kui accesspointile juurde pääseb ja seda seadistada saab, tuleb muuta arvuti TCP/IP parameetreid.

Windows 2000/XP

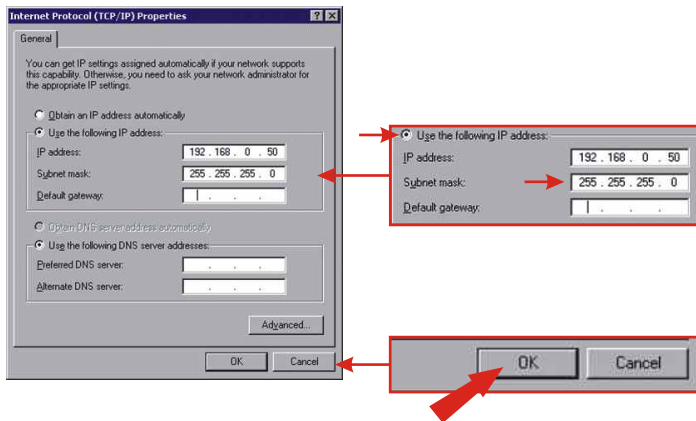
1. Leia töölaualt **Start** nupp.
2. Kliki **Start** ja kliki **Control Panel**. Windows 2000 puhul kliki **Start**, märgi **Settings** ja kliki **Control Panel**.
3. Topeltkliki **Network Connection** ikooni.
4. Paremkliki **Local Area Connection** ikooni ja seejärel kliki **Properties**. Avaneb **Local Area Connection Properties** aken.



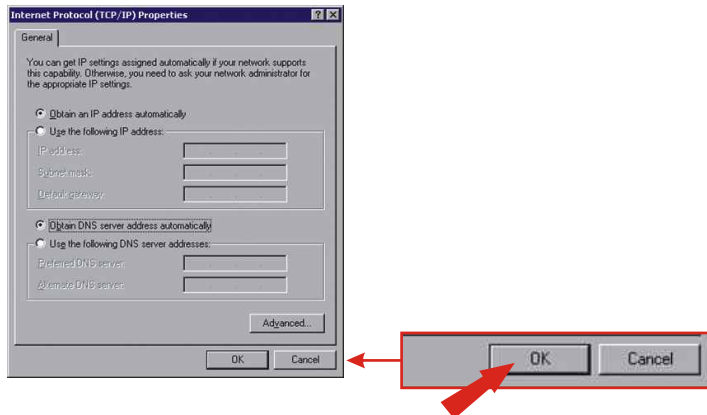
5. Leia ja klikki **General** sakil **Internet Protocol TCP/IP**, seejärel klikki **Properties**. Avaneb **Internet Protocol (TCP/IP) Properties** aken.



6. Vali **Use the following IP address**. Sisesta IP-adressiks 192.168.0.50, subnetiks 255.255.255.0 ja klikki **OK**.



7. Kliki OK.



8. Sinu arvuti on nüüd accesspointiga ühenduse loomiseks ja selle seadistamiseks valmis.

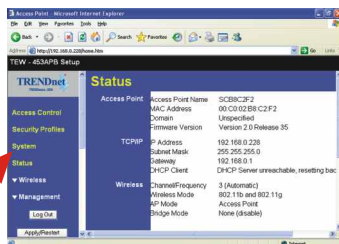
4. Accesspointi seadistamine

Kaabliühendusega arvutist

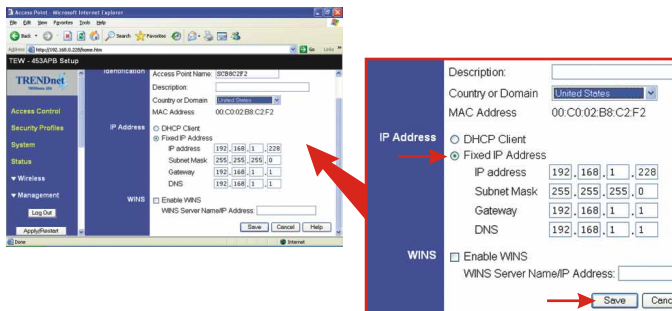
1. Ava veebibrauser (Internet Explorer või Netscape) ja sisesta aadressiribale <http://192.168.0.228>, seejärel vajuta **Enter** klahvi. Avaneb TEW-453APB autenteerimisaken. Sisesta kasutajatunnuseks (username) **admin** ja parooliks (password) **password**.



2. Kliki **System**.



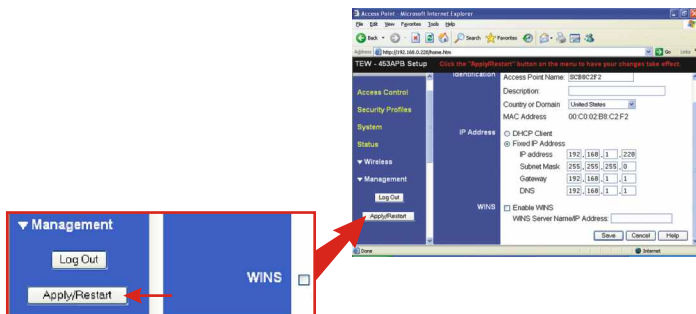
3. Vali rippmenüüst oma riik, kliki **Fixed IP Address** ja sisesta IP-aadress, subnet mask, gateway ja DNS, mis vastavad sinu praegustele võrguseadistustele. Kliki **Save**.



4. Kliki **OK**.



5. Kliki **Apply/Restart**.



6. TEW-453APB on nüüd WiFi ühenduseks valmis.

Troubleshooting

Q1: I specified the IP address `http://192.168.0.228` in my Internet browser's address bar, but an error message says "The page cannot be displayed". How can I get into the TEW-453APB's web configuration page?

A1: Please make sure that your workstation and the TEW-453APB are in the same network segment. Make sure you change your workstation's IP Address to 192.168.0.X where "X" is a number from 1 to 227 and 229 to 254. If your workstation and the TEW-453APB lie in the same network segment, then double-check the connection between the TEW-453APB and your switch, and make sure that the power adapters for your switch and the TEW-453APB are plugged in.

Q2: After I successfully configured the Access Point to meet my network settings, I cannot connect to my network using wireless computers.

A2: If you have a DHCP server in your network, you need to go into TCP/IP settings again and re-select "Obtain an IP automatically" for Windows 98/ME and "Obtain an IP Address automatically" for Windows 2000/XP to allow the PC to regain an IP address from your DHCP server.

Q3: When I configure the network settings for the TEW-453APB, I don't have a Domain Name Server, but the TEW-453APB requires a DNS entry. What do I do?

A3: In this case, your DNS entry is the same as your Gateway's entry. So if your Gateway is 192.168.1.1, then your DNS is 192.168.1.1.

Q4: All the settings are set correctly, but I still can't use the Access Point, what should I do?

A4: You can find additional information in the User's Guide. If you still have problems, contact our Technical Support by email or phone.

Certifications

This equipment has been tested and found to comply with FCC and CE Rules. Operation is subject to the following two conditions:

- (1) This device may not cause harmful interference.
- (2) This device must accept any interference received.
Including interference that may cause undesired operation.



NOTE: THE MANUFACTURER IS NOT RESPONSIBLE FOR ANY RADIO OR TV INTERFERENCE CAUSED BY UNAUTHORIZED MODIFICATIONS TO THIS EQUIPMENT. SUCH MODIFICATIONS COULD VOID THE USER'S AUTHORITY TO OPERATE THE EQUIPMENT.



TRENDnet

Product Warranty Registration

Please take a moment to register your product online.
Go to TRENDnet's website at <http://www.TRENDNET.com>

TRENDnet Technical Support

US/Canada Support Center

Contact

Telephone: 1(888) 777-1550

Fax: 1(310) 626-6267

Email: support@trendnet.com

Tech Support Hours

7:30am - 6:00pm Pacific Standard Time

Monday - Friday

European Support Center

Contact**Telephone**

Deutsch : +49 (0) 6331 / 268-460

Français : +49 (0) 6331 / 268-461

0800-907-161 (numéro vert)

Español : +49 (0) 6331 / 268-462

English : +49 (0) 6331 / 268-463

Italiano : +49 (0) 6331 / 268-464

Dutch : +49 (0) 6331 / 268-465

Eesti : +372-6593613 (9.00AM to 5:00PM)

Fax: +49 (0) 6331 / 268-466

Tech Support Hours

8:00am - 6:00pm Middle European Time

Monday - Friday

TRENDnet

3135 Kashiwa Street. Torrance, CA 90505

<http://www.TRENDNET.com>