

# TEW-441PC/TEW-443PI

**Quick Installation Guide**  
108Mbps 802.11g Wireless PC Card/108Mbps Wireless PCI Adapter

**Guide d'installation rapide**  
Carte PC Sans Fil 108Mbps 802.11g/Carte PCI Sans Fil 108Mbps

**Kurzanleitung zur Installation**  
108Mbit 802.11g WLAN PC Card/108Mbit WLAN PCI Adapter

**Guía de instalación rápida del**  
Tarjeta Inalámbrica para PC de 108Mbps 802.11g  
Adaptador inalámbrico PCI de 108Mbps

**PC-карта 108 Мбит/с 802.11g Wireless/PCI-адаптер Wireless 108 Мбит/с**  
Руководство по быстрой установке

Version 03.30.2005



**TRENDnet**  
TRENDware, USA  
**What's Next in Networking**

# Table of Contents

English .....	1
1. Prepare for Installation .....	1
2. Install Wireless Configuration Utility .....	3
3. Install Hardware .....	5
4. Install Drivers .....	7
5. Wireless Configuration .....	10
Troubleshooting.....	13

# English QIG

## 1. Prepare for Installation

Thank you for purchasing the TEW-441PC/TEW-443PI. Your new wireless network adapter will allow you to share the Internet, files, or other resources by connecting you to 802.11g or 802.11b wireless networks. This guide will help you set up and configure your wireless card. Following the installation instructions should be quick and easy. If you run into problems, please refer to the Troubleshooting section or the more detailed installation procedures on the User's Guide CD-ROM. If you need further technical support, please visit [www.TRENDNET.com](http://www.TRENDNET.com) or call by phone.

### Verify Package Contents

Please make sure you have everything in the box:

#### TEW-441PC



#### TEW-443PI



## **Verify Equipment**

Before installing this PCI Card or PC Card, you should have a:

1. Computer with an available 32-bit CardBus (TEW-441PC) or 32-bit PCI 2.2 slot (TEW-443PI)
2. 300 MHz processor and 32 MB of memory (Recommended)
3. CD-ROM drive
4. Properly-installed CardBus Controller (TEW-441PC only)
5. 802.11g/802.11b Access Point (for Infrastructure Mode) or another 802.11g/802.11b wireless adapter (for Ad-Hoc/Peer-to-Peer networking mode).

**Important!** DO NOT install the PCI adapter or PC Card in the computer until instructed to do so. Please follow the instructions in **Install Wireless Configuration Utility** before installing the adapter into your computer.

# 2. Install Wireless Configuration Utility

## Windows 98SE/ME/2000/XP

1. Insert the TEW-441PC/443PI CD-ROM into your computer's CD-ROM drive; the installation menu will appear automatically. If the window does not appear automatically, click **Start**, click **Run**, and type **E:\Autorun.exe** in the text-field. Click **OK** to start the installation.

**NOTE:** Replace "E" in "E:\Autorun.exe" with whichever letter is assigned to your CD-ROM drive.

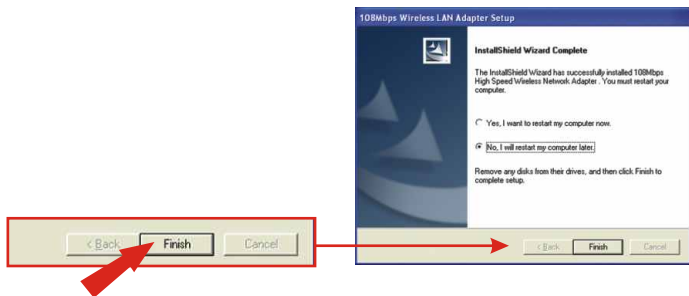
2. On the Installation Menu, click **Install Utility**.



3. Follow the Install Shield Wizard's instructions to install the wireless configuration utility.



4. When prompted to reboot, select **No, I will restart my computer later**, click **Finish**, and manually shutdown your computer to begin hardware installation.



## 3. Install Hardware

### If you are installing the TEW-441PC Wireless PC Card:

Proceed only if you have already completed the steps in Install Wireless Configuration Utility

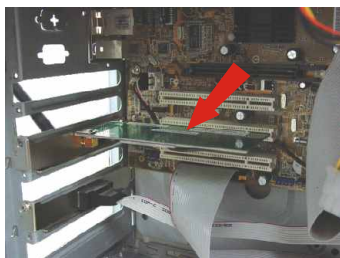
1. Shut down your computer.
2. Insert the PC Card firmly into your notebook PC's open PC Card slot. Only the plastic end-piece should protrude from the slot.
3. Reboot your computer.



### **If you are installing the TEW-443PI Wireless PCI Card:**

Proceed only if you have already completed the steps in Install Wireless Configuration Utility

1. Shut down your computer.
2. Open your computer case to reveal the motherboard and expansion slots.  
(Please refer to your computer's user manual if you need help opening the case)
3. Insert the wireless card into one of the motherboard's free PCI slots. Press down firmly and evenly on the card until it snaps into place.
4. Screw the PCI card's metal bracket into your case with a standard bracket screw. Attach the included antenna to the connector on the back of your card.
5. Close your computer case, and reboot your computer.





# 4. Install Drivers

## Windows 98SE/ME

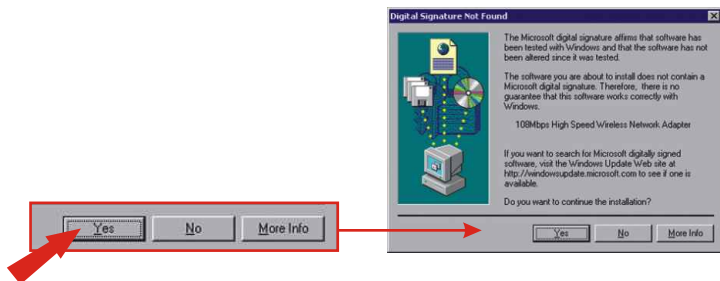
1. After rebooting your computer, Windows will install your drivers for the TEW-441PC/TEW-443PI. Click **Yes** to restart your computer.



2. Proceed to the **Wireless Configuration** of this Quick Installation Guide to continue configuring your wireless card.

## Windows 2000

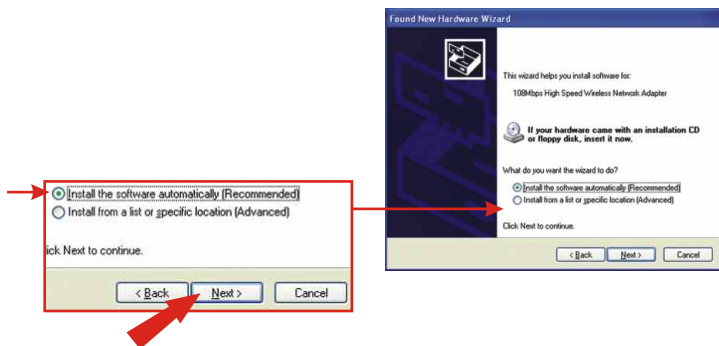
1. After rebooting your computer, a message will tell you that the driver you are about to install “does not contain a digital signature” and will ask you if you want to continue the installation. Click **Yes**.



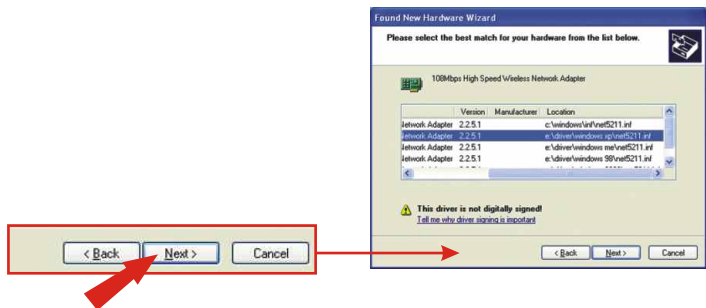
2. Proceed to the **Wireless Configuration** of this Quick Installation Guide to continue configuring your wireless card.

## Windows XP

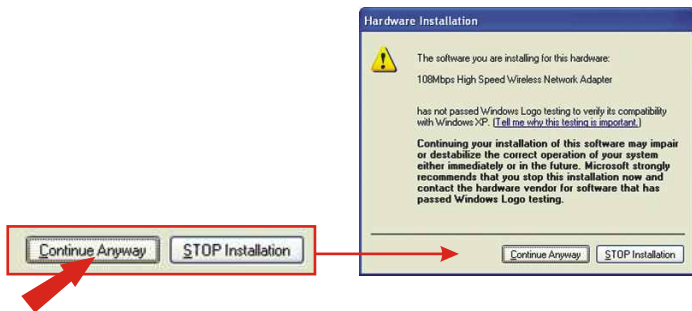
1. After your computer reboots, the “Found New Hardware Wizard” will appear. Select **Install the software automatically** and click **Next**.



2. When you are prompted to choose a driver from a list of compatible drivers, choose the one that is located in the TEW-441PC/443PI CD-ROM's Windows XP folder, and click **Next**.



3. A warning message will tell you that the device you are installing has not yet been certified for Windows XP compatibility. Click **Continue Anyway**.



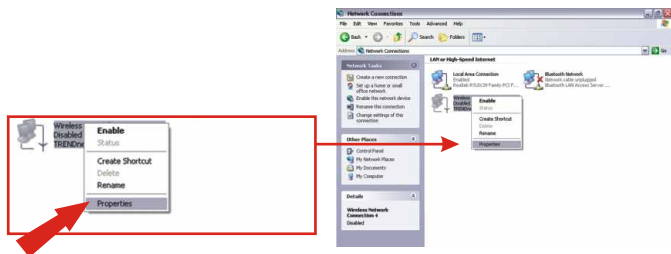
4. Click **Finish**.



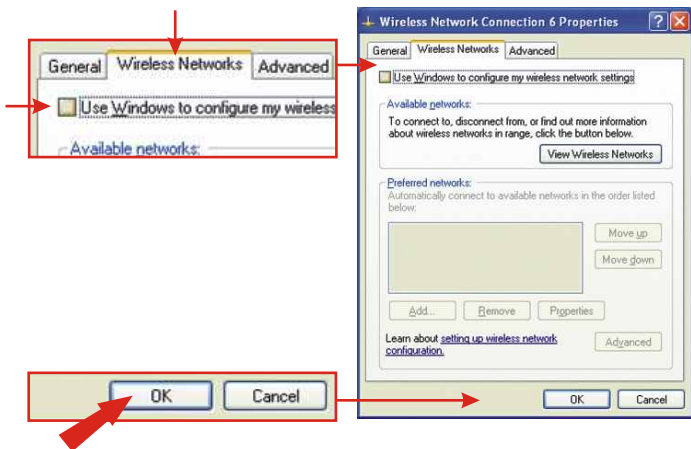
Proceed to the **Wireless Configuration** of this Quick Installation Guide to continue configuring your wireless card.

# 5. Wireless Configuration

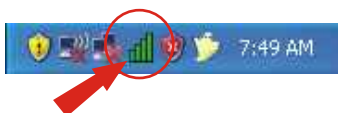
1. For Windows XP users, please disable Window's **Wireless Zero Configuration** utility before going to step c. Go to **Control Panel** → **Network Connections**, right click **Wireless Network Connection**, and select **Properties**.



2. Click **Wireless Networks** tab and **uncheck** "Use Windows to configure my wireless network settings." Click **OK**.



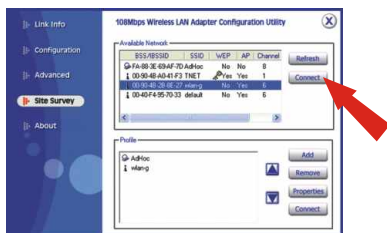
3. Double-click the wireless computer icon in your system tray (next to the clock in the bottom right corner of your screen).



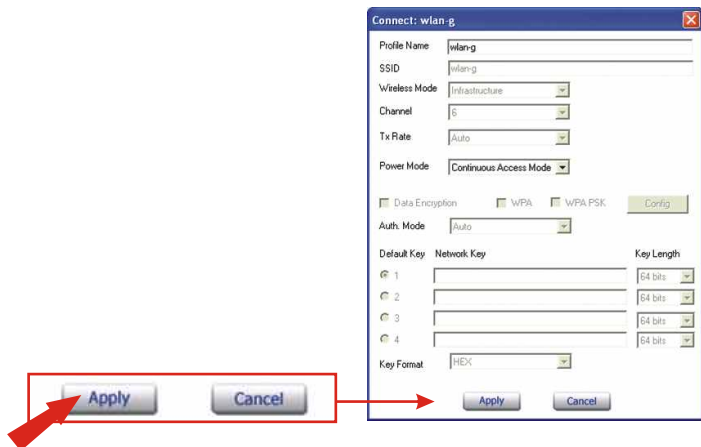
4. Click **Site Survey**.



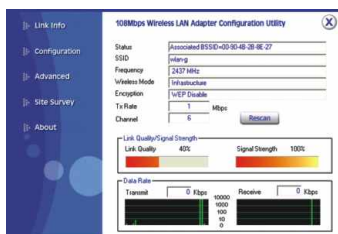
5. Select the SSID that matches your wireless access point, and click **Connect**.



## 6. Click **Apply**.



7. The TEW-441PC/TEW-443PI will wirelessly connect to your access point. If your access point has been configured for security purposes, please consult the User's Guide in the accompanied CD-ROM for advanced wireless connections.



# Troubleshooting

**Q1: I completed all the steps in the quick installation guide, but my card isn't connecting to my access point. What should I do?**

**A1:** You should first verify that the Network card's SSID matches your wireless router or access point's SSID. If they already match, you should check your TCP/IP properties to ensure that **Obtain an IP address automatically** is selected. Refer to your Windows User's Manual if you are unable to locate your TCP/IP properties.

**Q2: Windows is unable to recognize my hardware. What should I do?**

**A2:** Make sure your computer meets the minimum requirements as specified in Section 1 of this quick installation guide. Also, you must install the wireless configuration utility (as described in Section 2) BEFORE you physically install your network card. Lastly, you may consider moving the card to a different PCI/PC Card Slot.

**Q3: I cannot open the wireless configuration utility. What should I do?**

**A3:** Go to your device manager (control panel system) to make sure the adapter is installed properly. If you see a networking device with a yellow question mark or exclamation point, you will need to reinstall the device and/or the drivers.

If you still encounter problems, please refer to the User's Guide CD-ROM or contact technical support.

This equipment has been tested and found to comply with FCC and CE Rules. Operation is subject to the following two conditions:

- (1) This device may not cause harmful interference.
- (2) This device must accept any interference received including interference that may cause undesired operation.





**What's Next in Networking**

## Product Warranty Registration

Please take a moment to register your product online.  
Go to TRENDware's website at <http://www.TRENDNET.com>

## TRENDnet Technical Support

### US/Canada Support Center

**Contact**

**Telephone:** 1(310) 626-6252

**Fax:** 1(310) 626-6267

**Email:** [support@trendnet.com](mailto:support@trendnet.com)

**Tech Support Hours**

7:30am - 6:00pm Pacific Standard Time

Monday - Friday

### European Support Center

**Contact****Telephone**

Deutsch : +49 (0) 6331 / 268-460

Français : +49 (0) 6331 / 268-461

Español : +49 (0) 6331 / 268-462

English : +49 (0) 6331 / 268-463

Italiano : +49 (0) 6331 / 268-464

Dutch : +49 (0) 6331 / 268-465

**Fax:** +49 (0) 6331 / 268-466

**Tech Support Hours**

8:00am - 6:00pm Middle European Time

Monday - Friday

**TRENDware International, Inc.**  
3135 Kashiwa Street. Torrance, CA 90505  
**<http://www.TRENDNET.com>**