

TEW-435BRM

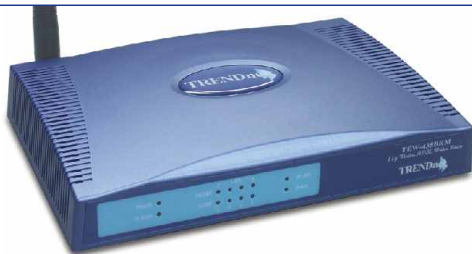
**54Mbps 802.11g ADSL Modem Router
Quick Installation Guide**

**Guide d'installation rapide du
Routeur Modem ADSL 54Mbps 802.11g**

**Anleitung zur Schnellinstallation des
54Mbps 802.11g ADSL Modem Router**

**Guía de Instalación Rápida
Enrutador Módem ADSL de 54Mbps 802.11g**

Version 07.07.04



TRENDnet[®]
TRENDAware, USA
What's Next in Networking

Table of Contents

English	1
1. Prepare for Installation	1
2. Install Hardware	3
3. Configure the computer's TCP/IP Settings	4
4. Wireless PC Configuration	9
5. Configure the ADSL Modem Router	11
Troubleshooting	16

English QIG

1. Prepare for Installation

Thank you for purchasing the TEW-435BRM. This Wireless ADSL Modem Router will allow you to connect to and share your DSL broadband Internet connection with 802.11g/802.11b wireless and wired computers.

This guide will help you setup and configure your router. Following the installation instructions should be quick and easy. If you run into problems, please refer to the Troubleshooting section or to the more detailed installation procedures on the CD User's Guide. If you need further technical support, please visit www.TRENDNET.com or call by phone.

Verify Package Contents

Please make sure you have everything in the box:



Verify Equipment

Before installing the Wireless ADSL Modem Router you should have:

1. A working DSL Internet connection.
2. A computer with wired or wireless network card installed.
3. An RJ45 Network Cable for each computer connected to the router.
4. TCP/IP protocol installed on each wired computer.
5. A Web Browser such as Internet Explorer (5.0 or higher) or Netscape Navigator (4.7 or higher).

Collect Internet Service Provider (ISP) Information

During the installation of your Wireless ADSL Modem Router, the Setup Wizard will automatically detect your ISP connection type. If the router cannot detect your ISP connection type, you can manually specify the connection type.

Please verify your DSL Internet broadband connection type with your ISP and ensure you have all the information for one of the following connection types:

A. Dynamic IP connection

ADSL Modem parameters (VPI or VCI), if it cannot be detected automatically. ISP may require you to use a particular Hostname or Domain name.

B. Static or Fixed IP connection

Internet IP Address: _____ (eg. 215.24.24.129)

Subnet Mask: _____

Gateway IP Address: _____

Primary DNS: _____

Secondary: _____

ADSL Modem Parameters (VPI or VCI), if it cannot be detected automatically.

C. PPPoE or PPPoA Dynamic IP connection

Login User Name: _____

Password: _____

ADSL Modem Parameters (VPI or VCI), if it cannot be detected automatically.

D. IPoA Static or Fixed (IP over ATM) connection

Internet IP Address: _____ (eg. 215.24.24.129)

Subnet Mask: _____

Gateway IP Address: _____

Primary DNS: _____

Secondary: _____

ADSL Modem Parameters (VPI or VCI), if it cannot be detected automatically.

2. Install Hardware

1. Connect a RJ-45 network cable from one of the Router's LAN ports to your computer's network port.

NOTE: Step 1. does not apply for wireless computer.

2. Connect the ADSL Cable phone line from the WAN port on the TEW-435BRM (the RJ11 phone connector) to the ADSL terminator.
3. Power on your ADSL Modem Router.



Verify Hardware Installation

Make sure the following Router LEDs are on: Power, LAN, WLAN, WAN.



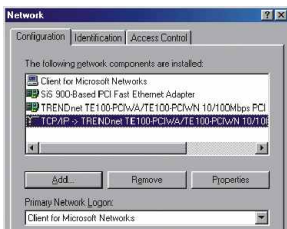
3. Configure the computer's TCP/IP Settings

To verify that your computer can communicate with your ADSL Modem Router, you need to configure the TCP/IP settings in your Operating System (OS). Setup for Windows OS computers is shown below. If you are running any other OS please see your system documentation for configuration information.

NOTE: Configure the Computer's TCP/IP Settings apply for both wired and wireless computers.

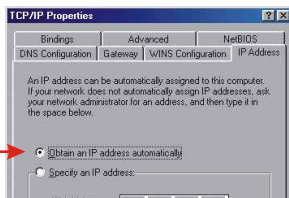
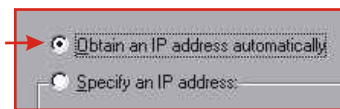
Windows 95/98/98SE/ME

1. Find the **Start** Button located on the Desktop.
2. Click **Start**, click **Settings**, then click on **Control Panel**.
3. Double-Click the **Network** icon, and the Network Properties box will appear.
4. Under the General Configuration Tab, locate and select **TCP/IP** with the corresponding network card (such as TRENDnet TE100-PCIWA/TE100-PCW/N 10/100Mbps PCI 10/100Mbps Network Adapter), then click on the **Properties** button. The TCP/IP window will appear.

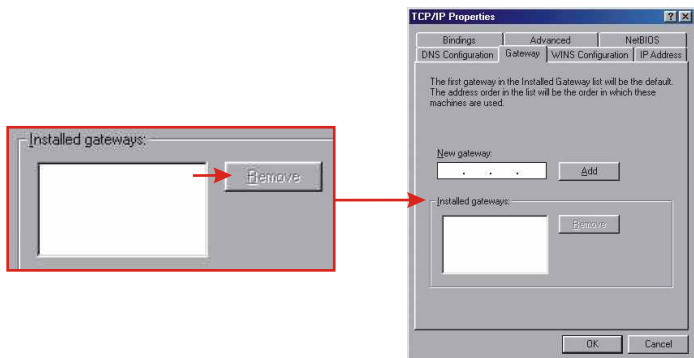


NOTE: If you have a Fixed IP address connection, write down the existing IP addresses from the following sections before you modify them.

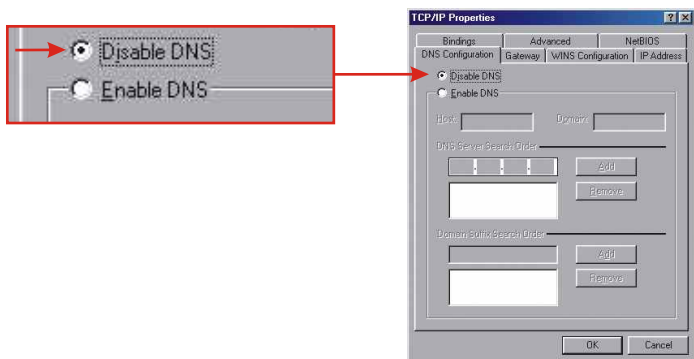
5. Under the IP Address Tab, click on **Obtain an IP address automatically**.



6. Now go to the Gateway tab and make sure no Gateways are listed in the Installed Gateway's section. If there is Gateway installed, select it and click **Remove** to remove it.

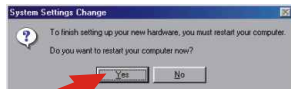


7. Now go to the DNS Configuration tab and click **Disable DNS**. Then click **OK**.



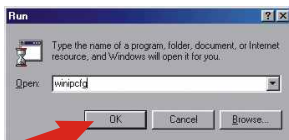
8. Click **OK** on the TCP/IP Properties box.
9. Click **OK** on the Network box to save the settings and close all properties windows.
10. At this point, the installation may require files from your Windows CD-ROM. If this is the case, insert your Windows 98 CD-ROM into your CD-ROM drive and select CD-ROM drive to load the files.

11. After the files load and the **System Settings Change** message appears, click **Yes** to reboot your system. This will update your computer with the new settings.

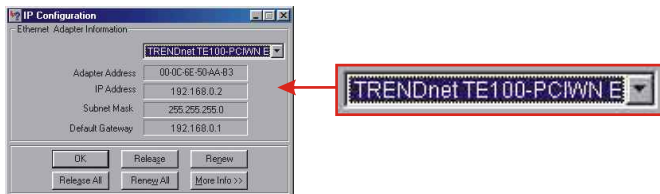


NOTE: If the message does not appear, you need to manually restart your computer.

12. After your system reboots, click **Start** and click on **Run**. Then, type **wiupcfdj** in the field and then click OK.



13. The IP configuration box will appear. Choose your Network adapter from the dropdown box (such as TRENDnet TE100-PCIWN E) and your computer's current IP address information will show in the box.

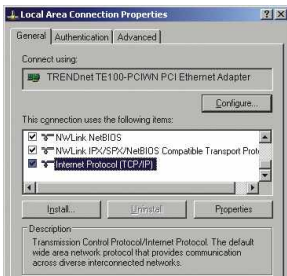


14. If your IP Configuration reads as follows, your computer is successfully connected to the router:
IP Address: 192.168.0.x
Subnet Mask: 255.255.255.0
Default Gateway: 192.168.0.1

NOTE: If your IP Configuration does not match the values above, please reboot and try the steps again.

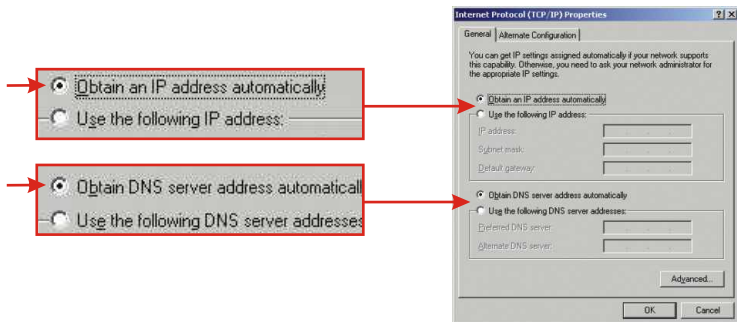
Windows 2000/XP

1. Click **Start**, click **Settings**, and click on **Control Panel**.
2. Double-Click the **Network Connections** icon.
3. Right-Click on the **Local Area Connection** icon, and then click on **Properties**. The Local Area Connection Properties box will appear.
4. Under the General Configuration Tab, locate and select **TCP/IP**, then click **Properties**. The Internet Protocol (TCP/IP) Properties box will appear.



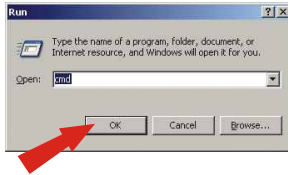
NOTE: If you have a Fixed IP address connection, write down the existing IP addresses from the following sections before you modify them.

5. Click on **Obtain an IP address automatically** and **Obtain DNS Server address automatically**.

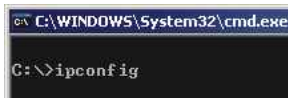


6. Click **OK**.
7. Click **Close** on the Local Area Connection Properties box.

8. Click **Start** then click on **Run**. Type **cmd** and click **OK**.

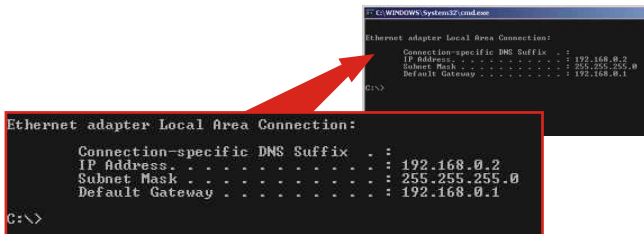


9. The Command Prompt window will appear. Type **ipconfig** at the C:\ prompt and Press the **Enter** key.



10. If your IP Configuration reads as follows, your computer is successfully connected to the router:

IP Address: 192.168.0.x
Subnet Mask: 255.255.255.0
Default Gateway: 192.168.0.1



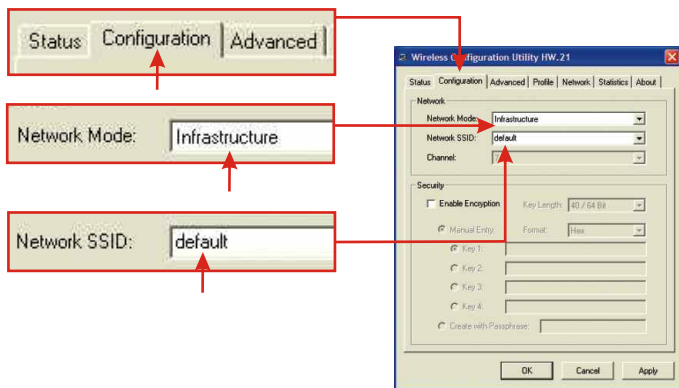
NOTE: If your IP Configuration does not match the values above, please reboot and try the steps again.

4. Wireless PC Configuration

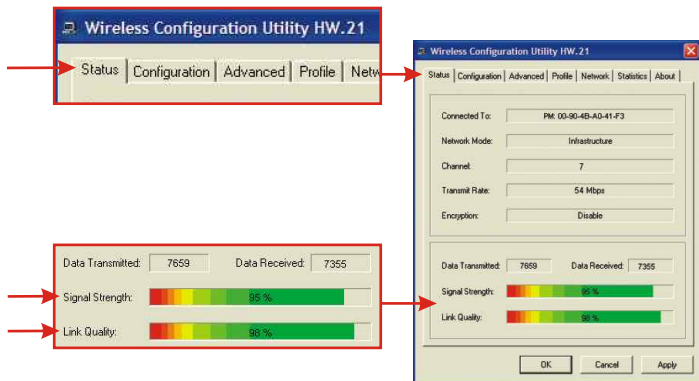
To connect your wireless computer to the Wireless ADSL Modem Router regardless of the operating system, you need to configure your wireless network card settings as follows:

- Wireless Network Mode : **Infrastructure**
- Wireless Network Identifier SSID or (ESSID): **default**
- Wireless Data Encryption WEP: **disabled**

1. Open the Wireless Utility Program and select the **Configuration** tab.
(Example uses TRENDnet's TEW-421PC 802.11g Wireless PC Card).
2. Select Network Mode: **Infrastructure** and Network SSID: **default**. Click **Apply** then click **OK**.



3. Select the **Status** tab. If you can see a percentage measurement of the Signal Strength and Link Quality, you have successfully connected to the wireless network . Click **OK**.

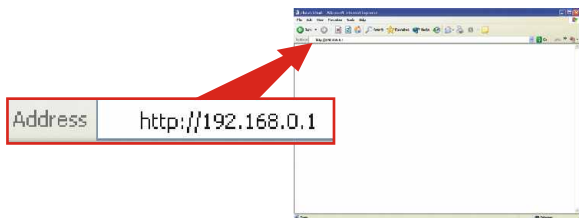


NOTE: If you need further help regarding the configuration of your wireless network card on your computer, please refer to your wireless network card User Manual.

Make sure you configure your wireless network card to **obtain an IP address automatically**. For more information, refer to section **Configure Computer**

5. Configure the ADSL Modem Router

1. Open your web browser. Type `http://192.168.0.1` in the Address bar and press the **Enter** key.



2. A login pop-up window will appear; type "admin" for the username and "password" for the password, then click **OK** to access the Setup Wizard.



3. Click **Setup Wizard**.

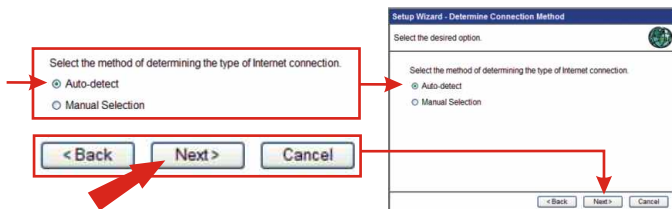


4. Click **Next** to configure your Wireless Router for Internet access.

NOTE: In the example, the DSL Connection is Dynamic IP.

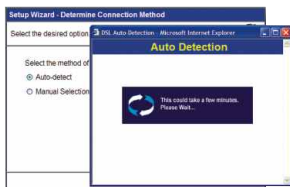


5. Select **Auto-detect** option and click **Next**.

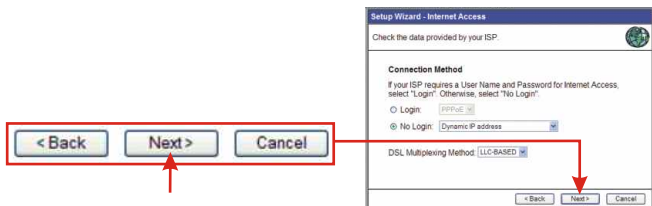


6. Wait for the Auto-Detection process to complete.

NOTE: If the Setup Wizard could not detect the Internet connection type automatically, select the Manual Selection option and input the information using the information provided by your ISP.



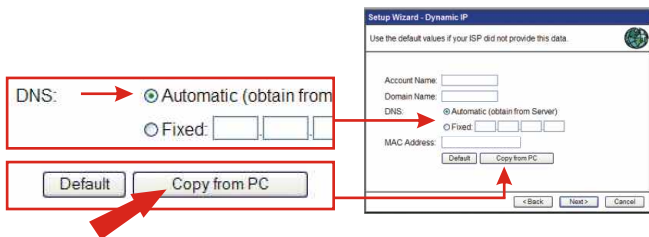
7. Click **Next**. In the example, the TEW-435BRM automatically detected the connection type as **Dynamic IP address**.



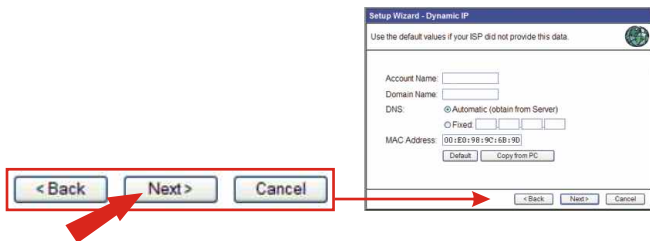
NOTE: For other connection methods, follow the on-screen instructions after Auto-Detection.

8. Select on **DNS: Automatic**, then Click **Copy from PC**.

NOTE: Copy the address of your PC into the hardware (MAC) address field - only required if your ISP has recorded the PC's hardware address.



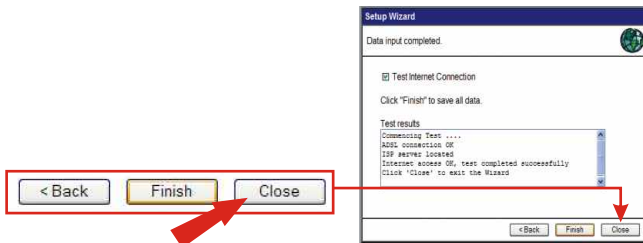
9. Click **Next** after obtaining the MAC address.



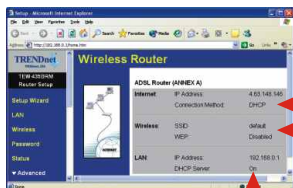
10. Click **Finish** to test the Internet Connection.



11. Click **Close** to complete the ADSL Modem setup.



Verify TEW-435BRM installation. In this example, the Dynamic IP DSL Connection has the following settings:



The screenshot shows the TRENDnet Wireless Router configuration interface. The 'Internet' section is expanded, showing the following settings:

Section	Parameter	Value
Internet	IP Address	4.03.146.540
	Connection Method	DHCP
Wireless	SSID	default
	WEP	Disabled
LAN	IP Address	192.168.0.1
	DHCP Server	On

Red arrows point from the following callout boxes to the corresponding settings in the screenshot:

- Connection Method: **DHCP**
- SSID: **default**
WEP: **Disabled**
- LAN DHCP Server: **On**

Congratulations! You have finished installing the TEW-435BRM Wireless ADSL Modem Router. If you would like to enable WEP settings on the TEW-435BRM, the wireless computer's WEP settings must be configured to match the TEW-435BRM's WEP settings.

Enter <http://www.TRENDNET.com> into the address bar of your Web browser to verify your connection to the Internet. If the website appears, your router is configured properly. For advanced settings, refer to the TEW-435BRM User's Guide CD.

6. Troubleshooting

Q1: The Wireless Router will not turn on. No LEDs light up

A1: The power adapter might not be connected. Please connect the power adapter to the power outlet and check the LEDs again. Please note that using the wrong power adapter might physically damage the unit.

Q2: I am not sure what type of Internet broadband connection I have for my DSL connection. How do I find out?

A2: You can contact your Internet Service Provider (ISP)'s Customer Service or Technical Support Department for the correct information.

Q3: I specified the IP address 192.168.0.1 in my Web browser, but an error message says "The page cannot be displayed". How can I get into the TEW-435BRM web configuration page?

A3: Please check your hardware and TCP/IP settings again by following the instructions in sections 1-3, make sure the Power, WAN, and on the LAN LEDs are on. Then try to access the configuration page using your Web Browser again.

Q4: I cannot see the wireless network with the SSID "default". What can I do?

A4: First, check that your wireless network card settings match the ADSL Modem Router's default settings:

- wireless Network Mode: **Infrastructure**
- wireless Network Identifier SSID or (ESSID): **default**
- wireless Data Encryption WEP: **disabled**

Second, connect to the wireless network again with the above settings.

For help with the wireless router's advanced features refer to the User's Guide on the CD-ROM. If you still encounter problems setting up the router, we can help. Please have your Internet account information ready (ISP, Account Type) and contact us using the information indicated below.

Contact Technical Support

Telephone: +1-310-891-1100

Fax: +1-310-891-1111

Website: www.TRENDNET.com

E-mail: support@trendware.com

Technical Support Hours

7:00AM ~ 6:00PM, Monday through Friday
Pacific Standard Time (except holidays)



TRENDware, USA

What's Next in Networking

Product Warranty Registration

Please take a moment to register your product online.
Go to TRENDware's website at <http://www.TRENDNET.com>

TRENDware International, Inc.
3135 Kashiwa Street
Torrance, CA 90505

<http://www.TRENDNET.com>