



## Quick Installation Guide



**TEW-432BRP**

# Table of Contents

Româna .....	1
1. Inainte de Incepe .....	1
2. Instalarea Routerului .....	2
3. Bonus .....	4
Troubleshooting .....	5

# 1. Inainte de Incepe



## Continutul Pachetului

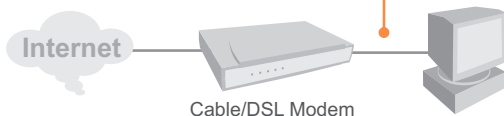
- TEW-432BRP
- CD Easy Go
- Ghid Rapid de Instalare
- Cablu RJ-45
- Incarcator AC (Power Adapter)

## Cerinte de Instalare

- Browser Web r: Internet Explorer (5.0 sau mai nou) sau Netscape Navigator (4.7 sau mai nou)
- Computer cu placa de retea instalata
- Broadband Internet
- Cablu sau modem DSL instalat

**Important!** NU conectati routerul pana cand nu sunteti instruit sa o faceti. Urmati pasii de mai jos inainte de a introduce CD-ul Easy-Go in unitatea CD-ROM.

1. Verificati daca aveti o conexiune directa de la Cablul sau modemul dvs la computer. De asemenea verificati daca sunteti conectat la Internet accesand un site,cum ar fi <http://www.trendnet.com>.

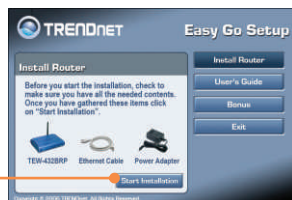


## 2. Instalarea Routerului

1. Introduceti CD-ul **Easy Go** in unitatea CD\_ROM si dati click pe **Install Router**.



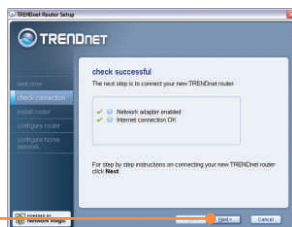
2. Dati Click pe **Start Installation**.



3. Dati Click pe **Next**.



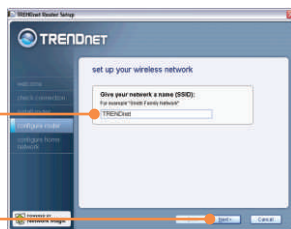
4. Dati Click pe **Next**.



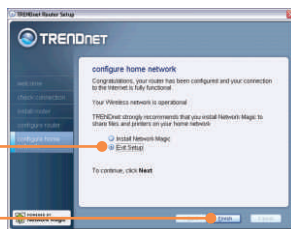
5. Urmati instructiunile Wizard si continuati cu pasii care mai sunt de urmat. Dati Click pe **Next**.



6. Cand apare ecranul **wireless network**, asigurati-va ca tastati un nume unic de retea, apoi dati click pe **Next**.



7. Dupa configurarea routerului, selectati **Exit Setup** iar apoi dati click pe **Finish**.



**Instalarea este acum gata.**

Pentru informatii detaliate cu privire la configurarea TEW-432BRP si setari avansate, va rugam apelati la Ghidul Utilizatorului inclus pe CD-ul Easy Go sau accesati [www.trendnet.com](http://www.trendnet.com)

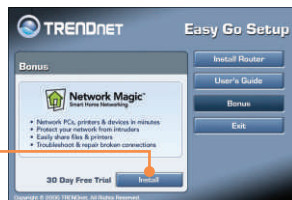
## 3. Bonus

Nota: Pe CD-ul Easy Go gasiti si o versiune trial a Network Magic.

1. Introduceti CD-ul **Easy Go** si dati click pe **Bonus**.



2. Dati Click pe **Install** si urmati instructiunile ce apar pe ecran.



**Q1: I inserted the Easy Go CD-ROM into my computer's CD-ROM drive and the installation menu does not appear automatically. What should I do?**

**A1:** If the installation menu does not appear automatically, click **Start**, click **Run**, and type **D:\Autorun.exe** where "D" in "D:\Autorun.exe" is the letter assigned to your computer's CD-ROM Drive. And then click **OK** to start the installation.

**Q2: How can I get into the TEW-432BRP web configuration page?**

**A2:** After you install the TEW-432BRP Wireless Router, you can access the web configuration page by opening your web browser and entering <http://192.168.1.1> into the web browser's address bar, where <http://192.168.1.1> is the default IP address of the TEW-432BRP Wireless Router.

**Q3: I am not sure what type of Internet Account Type I have for my Cable/DSL connection. How do I find out?**

**A3:** You can simply contact your Internet Service Provider's (ISP) Customer Service for the correct information.

**Q4: I received an error while running the Install Wizard. What should I do?**

**A4:** Make sure that your computer's CD-ROM is in working condition. Also verify that all cable connections are secure and that you are able to connect to the Internet, and then retry installing the router. During setup, the Install Wizard will check the operation of your network adapter and Internet connection.

If you still encounter problems or have any questions regarding the TEW-432BRP, please refer to the User's Guide included on the Easy Go Setup CD-ROM or contact Trendnet's Technical Support Department.

## Certifications

This equipment has been tested and found to comply with FCC and CE Rules.

Operation is subject to the following two conditions:

- (1) This device may not cause harmful interference.
- (2) This device must accept any interference received. Including interference that may cause undesired operation.



Waste electrical and electronic products must not be disposed of with household waste. Please recycle where facilities exist. Check with you Local Authority or Retailer for recycling advice.



**NOTE:** THE MANUFACTURER IS NOT RESPONSIBLE FOR ANY RADIO OR TV INTERFERENCE CAUSED BY UNAUTHORIZED MODIFICATIONS TO THIS EQUIPMENT. SUCH MODIFICATIONS COULD VOID THE USER'S AUTHORITY TO OPERATE THE EQUIPMENT.



## TRENDnet Technical Support

### US • Canada

**Toll Free Telephone:** 1(866) 845-3673

24/7 Tech Support



### Europe (Germany • France • Italy • Spain • Switzerland • UK)

**Toll Free Telephone:** +00800 60 76 76 67

English/Espanol - 24/7

Francais/Deutsch - 11 am-8pm, Monday - Friday MET

### Worldwide

**Telephone:** +(31) (0) 20 504 05 35

English/Espanol - 24/7

Francais/Deutsch - 11 am-8pm, Monday - Friday MET

## Product Warranty Registration

Please take a moment to register your product online.

Go to TRENDnet's website at <http://www.trendnet.com>

**TRENDnet**

3135 Kashiwa Street  
Torrance, CA 90505  
USA