



Microsoft Windows Vista Installation Guide

TEW-424UB

1. Microsoft Windows Vista Installation

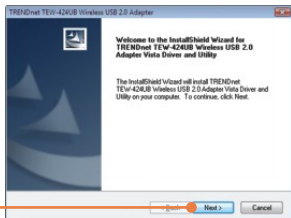
Important! DO NOT install the adapter in the computer until instructed to do so.

1. Go to <http://www.trendnet.com/support/vista.htm> and scroll down until you find TEW-424UB. Click download. If your country supports up of 11 channels, click on the driver link for 11 channels. If your country supports up to 13 channels, click on the driver link for 13 channels. Click the Vista driver link and save the drivers to your computer.

Note: You will need to uncompress the drivers after you download the drivers.

2. Browse towards the setup.exe icon. Double click the setup.exe icon.

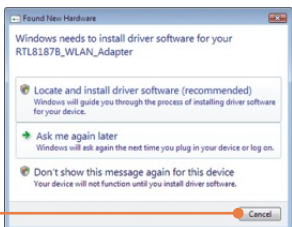
3. Click **Next**.



4. When this window appears, Connect the wireless adapter to an available USB port of your Windows Vista computer and then click **OK**.



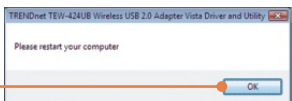
5. When this window appears, click **Cancel**.



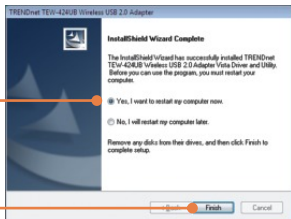
6. Click **Install this driver software anyway**.



7. Click **OK**.



8. Click Yes, I want to restart my computer now and then click Finish..



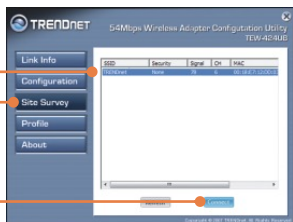
Your installation is now complete.

Connect to an Unsecured Connection

1. On the bottom right-hand corner of the screen, double-click the wireless configuration utility icon.



2. Click **Site Survey**. Click the **SSID** that matches your wireless access point and then click **Connect**.



3. Click **Apply**.

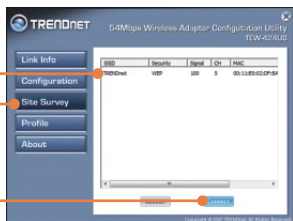


Connect to a Secured network (WEP)

1. On the bottom right-hand corner of the screen, double-click the wireless configuration utility icon.



2. Click **Site Survey**. Select the desired wireless network and then click **Connect**.



3. Typed in the Network Key, select the desired Key length and then click **Apply**.

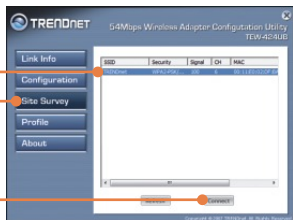


Connect to a Secured network (WPA)

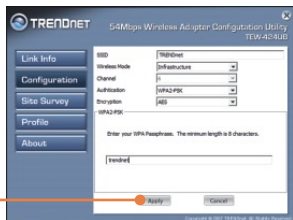
1. On the bottom right-hand corner of the screen, double-click the wireless configuration utility icon.



2. Click **Site Survey**. Select the desired wireless network and then click **Connect**.



3. Typed in the WPA passphrase and then click **Apply**.



Wireless configuration is now complete.

For detailed information regarding the TEW-424UB configuration and advanced settings, please refer to the User's Guide included on the Utility & Driver CD-ROM or TRENDnet's website at www.trendnet.com



TRENDnet Technical Support

US • Canada

Toll Free Telephone: 1(866) 845-3673
24/7 Tech Support



Europe (Germany • France • Italy • Spain • Switzerland • UK)

Toll Free Telephone: +00800 60 76 76 67
English/Espanol - 24/7
Francais/Deutsch - 11am-8pm, Monday - Friday MET

Worldwide

Telephone: +(31) (0) 20 504 05 35
English/Espanol - 24/7
Francais/Deutsch - 11am-8pm, Monday - Friday MET

Product Warranty Registration

Please take a moment to register your product online.
Go to TRENDnet's website at <http://www.trendnet.com/register>

TRENDnet[®]
20675 Manhattan Place
Torrance, CA 90501
USA