



Quick Installation Guide



TEW-424UB

Table of Contents

Français	1
1. Avant de commencer	1
2. Procéder à l'installation	2
3. Configuration sans fil	7
Troubleshooting	8

1. Avant de commencer



Contenu de l'emballage

- TEW-424UB
- CD-ROM avec le pilote et l'utilitaire
- Guide d'installation rapide

Configuration du système

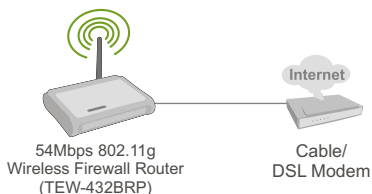
- Port USB : 1.1 ou 2.0
- Lecteur de CD-ROM
- Microprocesseur : Intel Pentium 300 MHz ou supérieur
- Mémoire : 32 MB ou supérieur
- Windows XP/2000/ME/98SE

Application

Workstation with 54Mbps Wireless USB 2.0 Adapter (TEW-424UB)



Workstation with 54Mbps
Wireless PCI Adapter
(TEW-423PI)



Notebook with 54Mbps
Wireless PC Card
(TEW-421PC)

2. Procéder à l'installation

Important ! NE BRANCHEZ PAS l'adaptateur USD sans fil à votre ordinateur avant d'y être invité.

Remarque: Consultez le guide de l'utilisateur sur le CD-ROM pour les instructions d'installation sur Windows 98SE et Windows ME.

Utilisateurs Windows

1. Insérez le **CD-ROM avec l'utilitaire et le pilote** dans le lecteur de CD-ROM de votre ordinateur et cliquez ensuite sur **Install Utility** (Installer l'utilitaire)



2. Suivez les instructions de l'assistant d'installation (**InstallShield Wizard**)

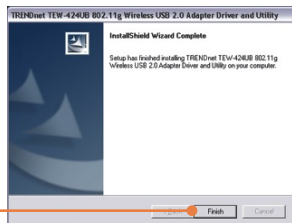
Remarque : Pour Windows XP, Veuillez poursuivre avec l'étape 3. Pour Windows 2000, veuillez passer à l'étape 11.

Windows XP

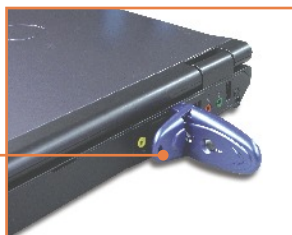
3. Cliquez sur **Continuez malgré tout.**



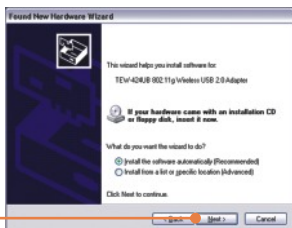
4. Cliquez sur **Finish (Terminer)**.



5. Branchez l'adaptateur sans fil à un port USB disponible sur votre ordinateur.



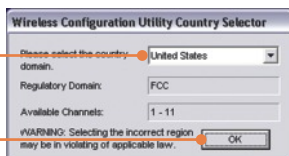
6. Cliquez sur **Install the software automatically (Recommended)** (Installer le logiciel automatiquement (recommandé)) et cliquez sur **Next (Suivant)**.



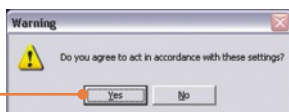
7. Cliquez sur **Continuez malgré tout**.



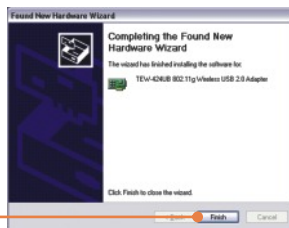
8. Sélectionnez le **domaine de pays** adéquat et cliquez ensuite sur **OK**.



9. Cliquez sur **Yes (Oui)**.



10. Cliquez sur **Finish (Terminer)**.

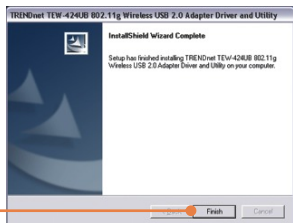


Windows 2000

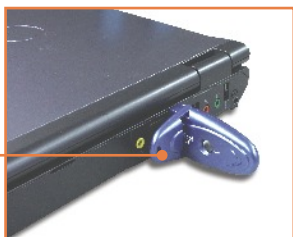
11. Cliquez sur **Yes (Oui)**.



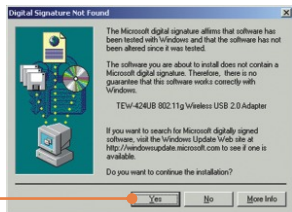
12. Cliquez sur **Finish (Terminer)**.



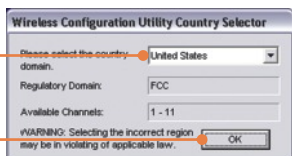
13. Branchez l'adaptateur sans fil à un port USB disponible sur votre ordinateur.



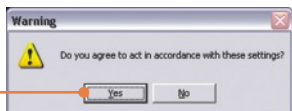
14. Cliquez sur **Yes (Oui)**.



15. Sélectionnez le **domaine de pays** adéquat et cliquez ensuite sur **OK**.



16. Cliquez sur **Yes (Oui)**.



L'installation est maintenant complète.

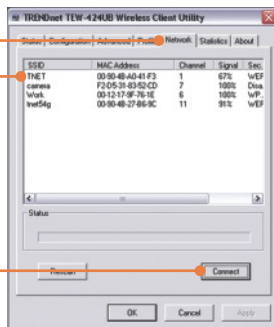
Si vous désirez des informations détaillées sur la configuration et les paramètres avancés du TEW-424UB, veuillez consulter la rubrique Dépannage, le guide de l'utilisateur sur CD-ROM ou le site Internet de Trendnet sur <http://www.trendnet.com>.

3. Configuration sans fil

1. Dans le coin inférieur droit de l'écran, double-cliquez sur l'icône **wireless client utility** (Utilitaire client sans fil)



2. Cliquez sur **Réseau** et sur le **SSID** correspondant à votre point d'accès sans fil et ensuite sur **Brancher**.



La configuration sans fil est à présent terminée.

Si vous désirez des informations détaillées sur la configuration et les paramètres avancés du TEW-424UB, veuillez consulter la rubrique Dépannage, le guide de l'utilisateur sur CD-ROM ou le site Internet de Trendnet sur <http://www.trendnet.com>.

Q1: I inserted the Utility & Driver CD-ROM into my computer's CD-ROM Drive and the installation menu does not appear automatically. What should I do?

A1: If the window does not appear automatically, click Start, click Run, and type D:\autorun where "D" in "D:\autorun.exe" is the letter assigned to your CD-ROM Drive, and then press the ENTER key on your keyboard.

Q2: I completed all the steps in the quick installation guide, but my Wireless USB Adapter is not connecting to my access point. What should I do?

A2: First, verify that the Network Name (SSID) matches your wireless router or access point's Network Name (SSID). Second, check your TCP/IP properties to ensure that Obtain an IP address automatically is selected. Third, open the Wireless Client Utility icon, click the Network tab and then click Scan to check and see if there are any available wireless networks listed.

Q3: Windows is unable to recognize my hardware. What should I do?

A3: Make sure your computer meets the minimum requirements as specified in Section 1 of this quick installation guide. Also, you must complete the installation of the wireless configuration utility (as described in Section 2) before connecting the Wireless USB Adapter to your computer. Lastly, you may consider moving the Wireless USB Adapter to a different USB port of your computer.

Q4: I cannot open the wireless configuration utility. What should I do?

A4: Access your device manager to make sure the adapter is installed properly. If you see a networking device with a yellow question mark or exclamation point, you will need to reinstall the device and/or the drivers. To access your device manager, right-click My Computer, click Properties, under Hardware tab click Device Manager.

Q5: How do I install the drivers on Windows 98SE or ME?

A5: Please refer to the User's Guide included on the Driver CD-ROM.

If you still encounter problems or have any questions regarding the TEW-424UB, please refer to the User's Guide included on the Utility & Driver CD-ROM or contact Trendnet's Technical Support Department.

Certifications

This equipment has been tested and found to comply with FCC and CE Rules.

Operation is subject to the following two conditions:

- (1) This device may not cause harmful interference.
- (2) This device must accept any interference received. Including interference that may cause undesired operation.



Este equipamento opera em caráter secundário, isto é, não tem direito a proteção contra interferência prejudicial, mesmo de estações do mesmo tipo, e não pode causar interferência a sistemas operando em caráter primário.

Waste electrical and electronic products must not be disposed of with household waste. Please recycle where facilities exist. Check with you Local Authority or Retailer for recycling advice.



NOTE: THE MANUFACTURER IS NOT RESPONSIBLE FOR ANY RADIO OR TV INTERFERENCE CAUSED BY UNAUTHORIZED MODIFICATIONS TO THIS EQUIPMENT. SUCH MODIFICATIONS COULD VOID THE USER'S AUTHORITY TO OPERATE THE EQUIPMENT.

ADVERTENCIA

En todos nuestros equipos se mencionan claramente las características del adaptador de alimentación necesario para su funcionamiento. El uso de un adaptador distinto al mencionado puede producir daños físicos y/o daños al equipo conectado. El adaptador de alimentación debe operar con voltaje y frecuencia de la energía eléctrica domiciliar existente en el país o zona de instalación.



TRENDnet Technical Support

US • Canada

Toll Free Telephone: 1(866) 845-3673

24/7 Tech Support

Europe (Germany • France • Italy • Spain • Switzerland • UK)

Toll Free Telephone: +00800 60 76 76 67

English/Espanol - 24/7

Francais/Deutsch - 11 am-8pm, Monday - Friday MET

Worldwide

Telephone: +(31) (0) 20 504 05 35

English/Espanol - 24/7

Francais/Deutsch - 11 am-8pm, Monday - Friday MET



Product Warranty Registration

Please take a moment to register your product online.

Go to TRENDnet's website at <http://www.trendnet.com>

TRENDnet[®]

20675 Manhattan Place

Torrance, CA 90501

USA