

TEM-336T

High Performance PCMCIA Ethernet Card with built-in Fax Modem

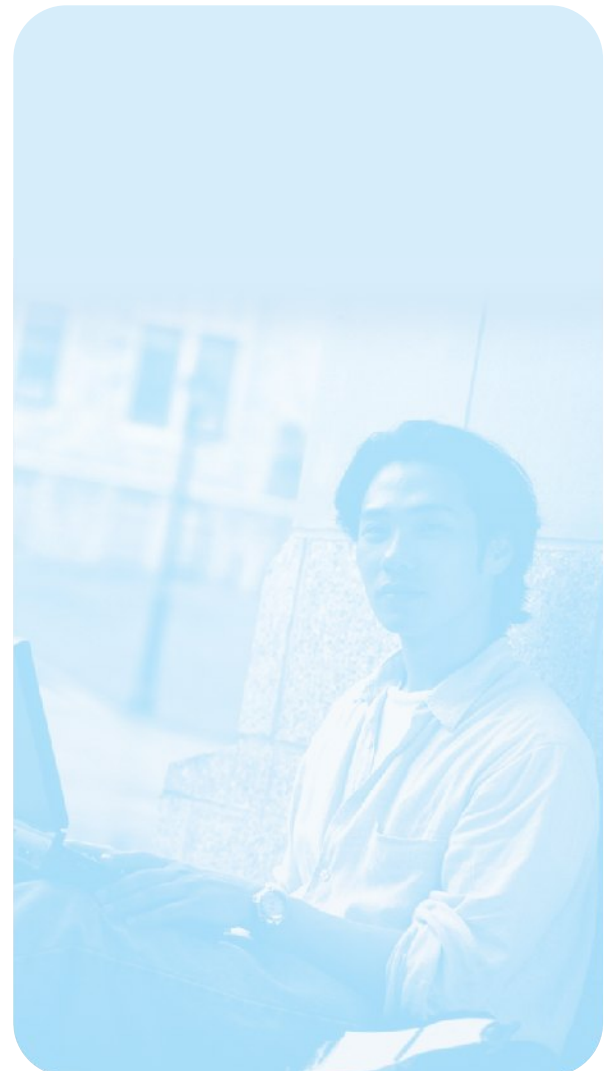
The TEM-336T combines TE-200CT and TFM-336P to one tiny credit card sized PCMCIA adapter. It allows for simultaneous V.34bis fast 33.6Kbps and 10Base-T connections, which frees a slot for another PC card. While you are on the road this is the only PC card needed to get you connected.

The TEM-336T also supports Group 3 fax send and receive functions. Software is included free with the TEM-336T for quick and easy startup. The TEM-336T is also compatible with all communications software capable of utilizing the Hayes 'AT'-command set.



FEATURES

- PCMCIA 2.1/JEIDA 4.1 compliant
- IEEE 802.3 10Base-T standard
- High performance 16C550A compatible UART
- Hayes 'AT'-command compatible
- Advanced Plug and Play technology to run with Windows 95
- Data and fax software for Windows included
- Automatic sleep mode to extend PC battery life
- RJ-11 cable with internal DAA for direct connection to the telephone wall socket
- High speed 33.6Kbps data and 14.4Kbps fax communication



TEM-336T

High Performance PCMCIA Ethernet Card with built-in Fax Modem

SPECIFICATIONS

Ethernet Standard:

- IEEE 802.3 10Base-T

Operating Protocol:

- V.34bis (33,600bps); V.34 (28,800 to 2,400 bps); V32bis (14,400/12,000/9,600/7,200 bps); V.32 (9,600/4,800 bps); V.22bis (2,400 bps); V.23 (1,200 TX/75 RX bps); V.22/Bell 212A (1,200 bps); V.21/Bell 103 (300bps)

Error Correction Protocol:

- V.42 and MNP Class 2 to 4

Data Compression Protocol:

- V.42bis and MNP Class

Fax Compatibility:

- EIA Class 1 fax commands; Group 3 send and receive; ITU-T V.17 up to 14,400 bps; ITU-T V.29 up to 9,600 bps; ITU-T V.27ter up to 4,800 bps; ITU-T V.21 Channel 2 up to 300 bps

Dialing Capability:

- DTMF tone; Rotary pulse

Operating Modes:

- Asynchronous full duplex
- Manual/automatic answer

Flow Control:

- Hardware CTS/RTS
- Software XON/XOFF

Receive Sensitivity:

- -40 dBm

Transmit Level:

- Permissive -10 (\pm) 1 dBm

Line Interface:

- RJ-11, 2-wire dial-up; RJ-45, 10Base-T

Diagnostic:

- Power-up self-test; Local analog loopback with self-test; Local digital loopback test; Remote digital loopback test; Remote digital loopback with self-test

Software Control Interface:

- Hayes compatible AT command set

Call Progress Monitoring:

- Dial tone; Busy tone; Ringback detection

Typical Power Consumption:

- Operation: 640mW;
- Sleep mode: 80mW

Dimension:

- Comply with PCMCIA Type II
- 85.6mm x 54mm x 5mm



PRODUCT INFORMATION

TEM-336T

PCMCIA Ethernet (TP) + 33.6Kbps High Speed Fax Modem

ORDERING INFORMATION

**TRENDware International, Inc.**

3135 Kashiwa Street
Torrance, CA. 90505. USA

Tel: 310-891-1100

Fax: 310-891-1111

Web: www.TRENDNET.com

Email: sales@trendware.com

To Order Please Call:
1-888-326-6061