



TRENDNET



Quick Installation Guide



TEG-S081Fi

Table of Contents

Deutsch	1
1. Bevor Sie anfangen	1
2. Herstellung der Verbindung	2
3. Verwendung des Umschalters	3
Troubleshooting	5

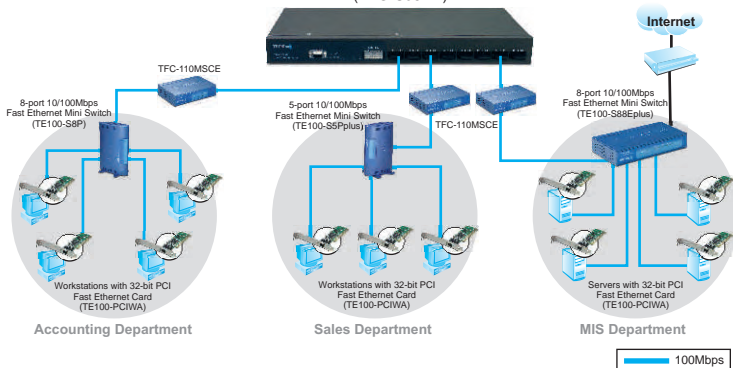
1. Bevor Sie anfangen



Systemanforderungen

1. PCs mit Netzwerkkarten
2. TCP/IP-Protokoll auf allen Computern
3. Webbrowser wie Internet Explorer oder Netscape Navigator
4. Multimode-Glasfaserkabel mit SC-Anschlüssen
5. Multimode-Glasfaserkonverter mit SC-Anschlüssen oder ein Umschalter mit einem SC-Glasfaseranschluss.

8-Port 100Base-FX Layer 2 Managed Switch with GBIC Slot (TEG-S081Fi)



2. Herstellung der Verbindung

1. Stecken Sie das Stromkabel in die Rückseite des TEG-S081Fi.

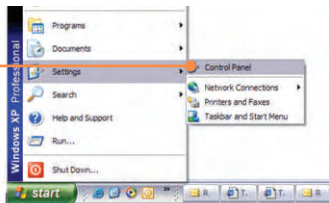


2. Schließen Sie das Glasfaserkabel an der Vorderseite des Umschalters und an Ihrem Network an.

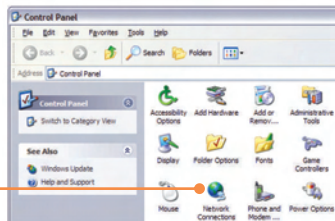
3. Kontrollieren Sie, dass die LED **PWR** kontinuierlich grün leuchtet. leuchten. Diese LEDs dürfen nicht blinken.

3. Verwendung des Umschalters

1. Gehen Sie zu **Start** ?
Settings(Einstellungen) ?
Control Panel (Systemsteuerung).



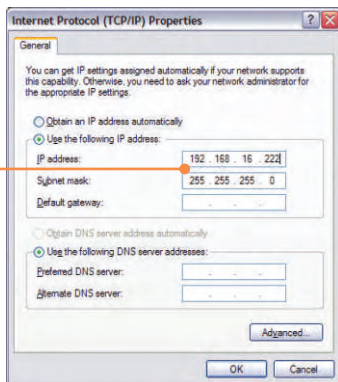
2. Doppelklicken Sie auf das Symbol
Network Connection
(Netzwerkverbindung).



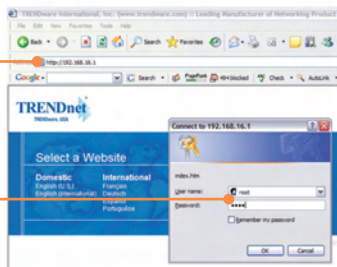
3. Klicken Sie mit der rechten
Maustaste auf das Symbol **Local
Area Connection (LAN-
Verbindung)** und klicken Sie dann
auf **Properties (Eigenschaften)**.



4. Stellen Sie die IP-Adresse Ihres PCs bitte auf **192.168.16.x**.



5. Öffnen Sie Ihren Webbrowser, geben Sie **http://192.168.16.1** ein und drücken Sie auf die **Eingabetaste (Enter)**.



6. Benutzername: **root**
Kennwort: **root**

7. Wählen Sie auf der linken Seite die entsprechende Option zur Konfiguration des SNMP-Switch aus.



Ihre Installation ist beendet!

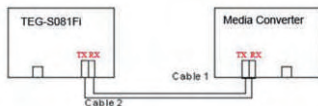
Hinweis: Zusätzliche Informationen zu den erweiterten Funktionen finden Sie in der Bedienungsanleitung.

Q1. How come I cannot see any light from any of my LED's?

A1. Your TEG-S081Fi is not getting any power. Make sure that your surge protector or your outlet is getting power and make sure that the AC Power cord is properly connected to your TEG-S081Fi .

Q2. I connected my fiber converter to the TEG-S081Fi using a Multimode Fiber cable with SC connectors. However, the network activity LED does not blink. What should I do?

A2. Go to the TEG-S081Fi and move the connector that was in the **transmit** side to the **receive** side, and the other connector that was in the **receive** side to the **transmit** side.



Q3. I changed my IP settings to 192.168.16.222 to access the switch, but I still cannot get into the Web configuration page. What should I do?

A3. Make sure there is no other network device using the same IP address. Afterwards, consult the User's Guide to access the switch through the Console Port. Once you reach the command line interface, perform a factory reset and try again.

Q4. I performed a factory reset on the TEG-S081Fi, but I still cannot access the web configuration page. What should I do?

A4. If you are configuring more than one TEG-S081Fi, then it is possible that you are experiencing IP conflict between these two switches. Please configure each switch one at a time, and make sure you assign a unique IP address to each switch.

If you have any questions regarding the TEG-S081Fi, please contact TRENDnet's Technical Support Department.

Certifications

This equipment has been tested and found to comply with FCC and CE Rules. Operation is subject to the following two conditions:

- (1) This device may not cause harmful interference.
- (2) This device must accept any interference received.
Including interference that may cause undesired operation.



Waste electrical and electronic products must not be disposed of with household waste. Please recycle where facilities exist. Check with your Local Authority or Retailer for recycling advice.



NOTE: THE MANUFACTURER IS NOT RESPONSIBLE FOR ANY RADIO OR TV INTERFERENCE CAUSED BY UNAUTHORIZED MODIFICATIONS TO THIS EQUIPMENT. SUCH MODIFICATIONS COULD VOID THE USER'S AUTHORITY TO OPERATE THE EQUIPMENT.



TRENDnet

TRENDnet Technical Support

US/Canada Support Center

Contact

Telephone: 1(866) 845-3673

Email: support@trendnet.com

Tech Support Hours

24/7 Toll Free Tech Support



European Support Center

Contact

Telephone:

Deutsch : +49 (0) 6331 / 268-460

Français : +49 (0) 6331 / 268-461

0800-90-71-61 (numéro vert)

Español : +49 (0) 6331 / 268-462

English : +49 (0) 6331 / 268-463

Italiano : +49 (0) 6331 / 268-464

Dutch : +49 (0) 6331 / 268-465

Fax: +49 (0) 6331 / 268-466

Tech Support Hours

8:00am - 6:00pm

Middle European Time

Monday - Friday

Product Warranty Registration

Please take a moment to register your product online.

Go to TRENDnet's website at <http://www.trendnet.com>

TRENDnet

3135 Kashiwa Street

Torrance, CA 90505

USA