



Quick Installation Guide

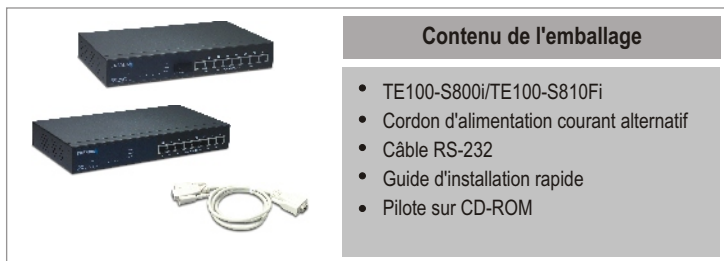


TE100-S800i
TE100-S810Fi

Table of Contents

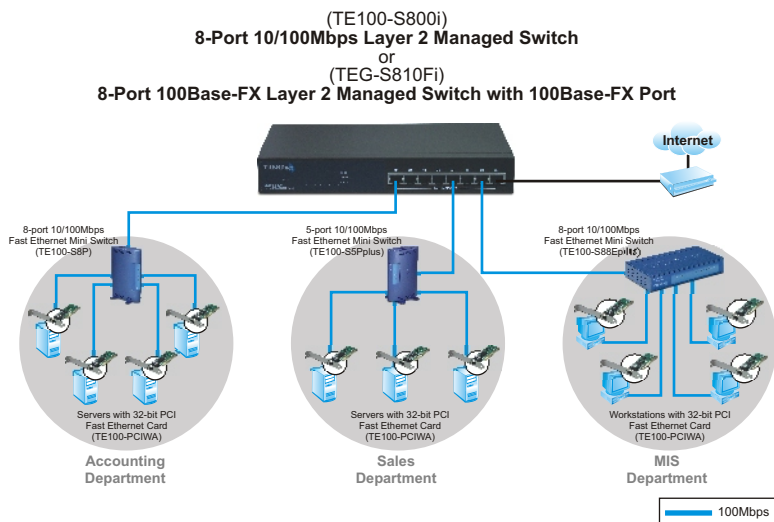
Français	1
1. Avant de commencer	1
2. Comment effectuer les connexions	2
3. Utilisation du Switch	3
Troubleshooting	5

1. Avant de commencer



Configuration du système

1. Des postes de travaux équipés de cartes réseau
2. Le protocole TCP/IP installé sur chaque ordinateur.
3. Un navigateur Internet tel Internet Explorer ou Netscape Navigator
4. Un câble réseau RJ-45 pour brancher vos postes de travail au TE100-S800i/TE100-S810Fi



2. Comment effectuer les connexions

1. Branchez le cordon d'alimentation à l'arrière du TE100-S800i/TE100-S810Fi.

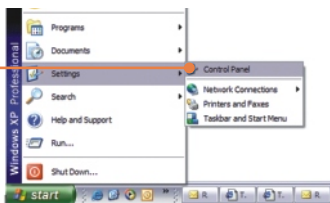


2. Branchez le câble réseau à l'avant du switch, et à votre PC.

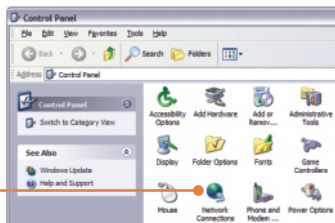
3. Vérifiez que le voyant **PWR** est vert et ne clignote pas.

3. Utilisation du Switch

1. Allez sur **Start (Démarrer)** → **Settings (Paramètres)** → **Control Panel (Panneau de configuration)**.



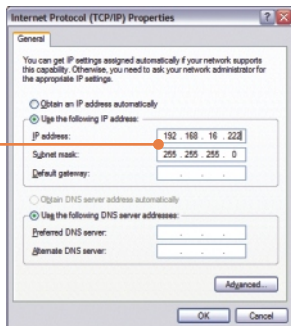
2. Double-cliquez sur l'icône **Network Connection (Connexions réseau)**.



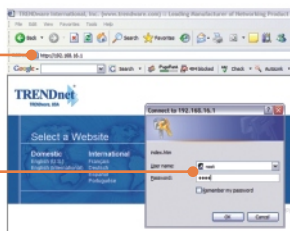
3. Faites un clic droit sur l'icône **Local Area Connection (Connexions au réseau local)** et cliquez ensuite sur **Propriétés (Propriétés)**.



4. Cliquez sur l'onglet **General** et ensuite sur **Propriétés (Propriétés)**. Sélectionnez **Internet Protocol(TCP/IP) (Protocole Internet(TCP/IP))**, et cliquez sur **Propriétés (Propriétés)**. Modifiez l'adresse IP et indiquez 192.168.16.222. Cliquez ensuite sur **OK** pour appliquer le paramétrage.



5. Ouvrez votre navigateur Internet, tapez-y **http://192.168.16.1**, et enfoncez la touche **Enter**.



6. Nom d'utilisateur : **root**
Mot de passe : **root**

7. Sélectionnez l'option adéquate permettant de configurer le switch SNMP.



L'installation est maintenant complète.

Remarque : Pour plus d'informations sur les fonctions avancées, veuillez consulter le guide de l'utilisateur.

Q1. How come I cannot see any light from any of my LED's?

A1. Your TE100-S800i/TE100-S810Fi is not getting any power. Make sure that your surge protector or your outlet is getting power and make sure that the AC Power cord is properly connected to your TE100-S800i/TE100-S810Fi.

Q2. I changed my IP settings to 192.168.16.222 to access the switch, but I still cannot get into the Web configuration page. What should I do?

A2. Make sure there is no other network device using the same IP address. Afterwards, consult the User's Guide to access the switch through the Console Port. Once you reach the command line interface, perform a factory reset and try again.

Q3. I performed a factory reset on the TE100-S800i/TE100-S810Fi, but I still cannot access the web configuration page. What should I do?

A3. If you are configuring more than one TE100-S800i/TE100-S810Fi, then it is possible that you are experiencing IP conflict between these two switches. Please configure each switch one at a time, and make sure you assign a unique IP address to each switch.

If you have any questions regarding the TE100-S800i/TE100-S810Fi, please contact TRENDnet Technical Support Department.

Certifications

This equipment has been tested and found to comply with FCC and CE Rules.

Operation is subject to the following two conditions:

- (1) This device may not cause harmful interference.
- (2) This device must accept any interference received. Including interference that may cause undesired operation.



Waste electrical and electronic products must not be disposed of with household waste. Please recycle where facilities exist. Check with you Local Authority or Retailer for recycling advice.



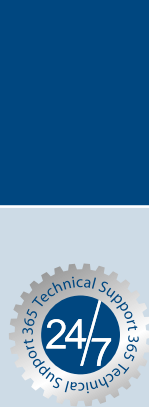
NOTE: THE MANUFACTURER IS NOT RESPONSIBLE FOR ANY RADIO OR TV INTERFERENCE CAUSED BY UNAUTHORIZED MODIFICATIONS TO THIS EQUIPMENT. SUCH MODIFICATIONS COULD VOID THE USER'S AUTHORITY TO OPERATE THE EQUIPMENT.

ADVERTENCIA

En todos nuestros equipos se mencionan claramente las características del adaptador de alimentación necesario para su funcionamiento. El uso de un adaptador distinto al mencionado puede producir daños físicos y/o daños al equipo conectado. El adaptador de alimentación debe operar con voltaje y frecuencia de la energía eléctrica domiciliar existente en el país o zona de instalación.



TRENDnet®



TRENDnet Technical Support

US • Canada

Toll Free Telephone: 1(866) 845-3673

24/7 Tech Support

Europe (Germany • France • Italy • Spain • Switzerland • UK)

Toll Free Telephone: +00800 60 76 76 67

English/Espanol - 24/7

Francais/Deutsch - 11am-8pm, Monday - Friday MET

Worldwide

Telephone: +[31] [0] 20 504 05 35

English/Espanol - 24/7

Francais/Deutsch - 11am-8pm, Monday - Friday MET

Product Warranty Registration

Please take a moment to register your product online.

Go to TRENDnet's website at <http://www.trendnet.com>

TRENDnet®

20675 Manhattan Place

Torrance, CA 90501

USA