

# TE100-PCIWA/TE100-PCIWN

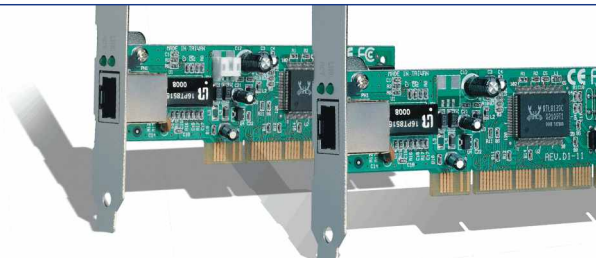
32-bit PCI 10/100Mbps N-way Fast Ethernet Card with ACPI Wake-on-LAN/  
32-bit PCI 10/100Mbps N-way Fast Ethernet Card  
Quick Installation Guide

Guide d'installation rapide pour le  
Carte Fast Ethernet de 32-bit PCI 10/100Mbps N-way avec ACPI Wake-on-LAN/  
Carte Fast Ethernet de 32-bit PCI 10/100Mbps N-way

Anleitung zur Schnellinstallation des  
Nway Fast Ethernet Card mit 32-Bit PCI 10/100 MBit/s und ACPI Wake-on-LAN/  
Nway Fast Ethernet Card mit 32-Bit PCI 10/100 MBit/s

Guía de Instalación Rápida para  
Tarjeta Fast Ethernet N-way de 32 bits PCI a 10/100Mbps con soporte ACPI y Wake-on-LAN/  
Tarjeta Fast Ethernet N-way de 32 bits PCI a 10/100Mbps

Version 08.18.04



**TRENDnet**<sup>®</sup>  
TRENDware, USA  
**What's Next in Networking**

# Table of Contents

English .....	1
1. Prepare for Installation .....	1
2. Install Hardware .....	2
3. Install Drivers .....	3
Troubleshooting .....	7

# English QIG

## 1. Prepare for Installation

Thank you for purchasing TRENDnet's TE100-PCIWN or TE100-PCIWA network adapter. Your new network adapter will allow you to connect to a Cable/DSL modem for broadband Internet access or share Internet access, files, and other resources on a 10/100Mbps Fast Ethernet network.

This guide will help you set up and configure your TE100-PCIWN or TE100-PCIWA network adapter. Following this installation should be quick and easy. If you run into problems, please refer to the Troubleshooting section at the end of this guide. If you need further technical support, please visit [www.TRENDNET.com](http://www.TRENDNET.com) or call technical support by phone.

### Verify Package Contents

Please make sure you have everything in the box:



### Verify Equipment

Before installing this adapter, you should have:

1. A Computer with an available 32-bit PCI slot
2. Motherboard with Wake-On-LAN support for using Wake-On-LAN feature (TE100-PCIWA only)
3. A 300 MHz processor and 32 MB RAM on your computer (Recommended)
4. Windows 98/98SE/ME/2000/XP/2003 installed on your computer
5. A RJ-45 Ethernet cable

## 2. Install Hardware

### Install Network Adapter

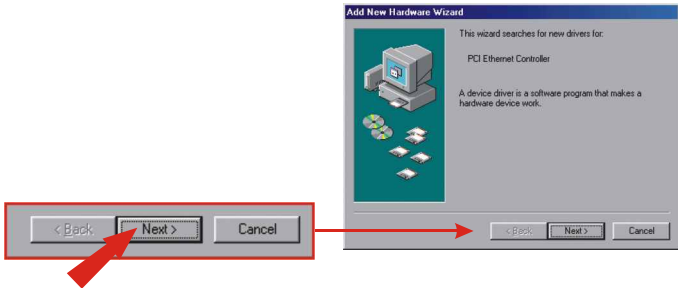
1. Shut down your computer.
2. Open your computer case to reveal the motherboard and expansion slots.  
(Please refer to your computer's user manual if you need help opening the case)
3. Insert the TE100-PCIWN or TE100-PCIWA network adapter into one of the motherboard's free PCI slots. Press down firmly and evenly on the card until it snaps into place.
4. If you would like to use the Wake-On-LAN feature, connect the included Wake-On-LAN cable to the motherboard's Wake-On-LAN connector. (For TE100-PCIWA only)
5. Screw the PCI card's metal bracket into your case with a standard bracket screw.
6. Close your computer case, and reboot your computer.
7. Connect your RJ-45 Ethernet cable to the TE100-PCIWN or TE100-PCIWA's Ethernet port and to the existing 10/100Mbps Fast Ethernet network or Cable/DSL modem.
8. Turn on your computer.



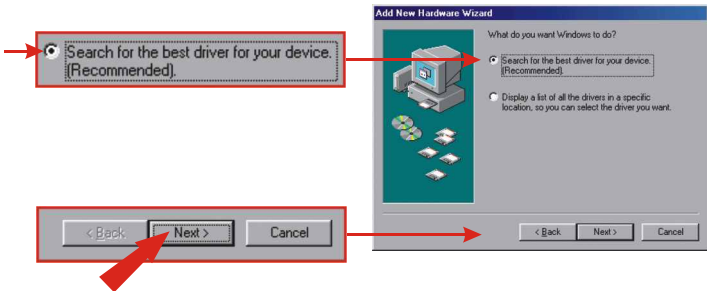
# 3. Install Drivers

## Install Network Adapter

1. After your computer reboots, the “Add New Hardware Wizard” will appear. Click **Next**.

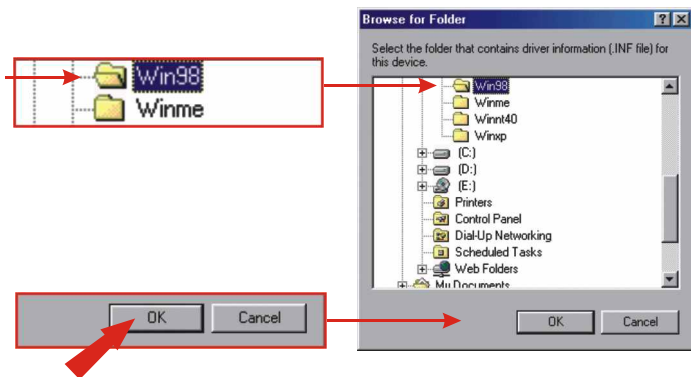


2. Insert the included TE100-PCIW Series Driver Diskette into your computer's floppy-drive. Verify that **Search for the best driver for your device** is selected, and click **Next**.

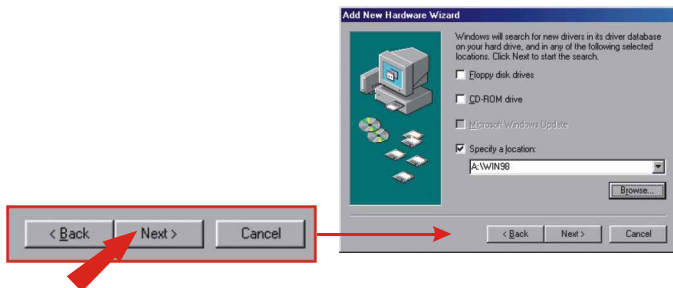


3. Select **Specify a location**, and click **Browse**.

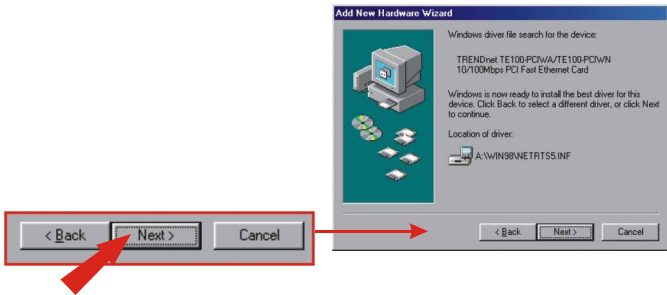
4. Double-click your floppy-drive (i.e.: **3 1/2 Floppy (A:)**). Select the folder named **Win98**, and click **OK**.



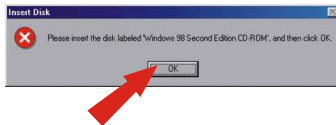
5. Click **Next**.



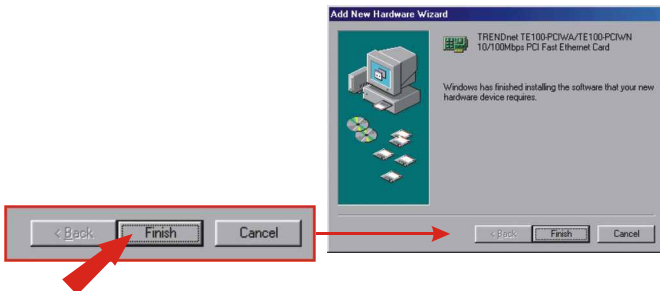
6. Once the Wizard tells you it's "ready to install the best driver," click **Next** to begin installing the driver.



7. You may be asked to insert your Windows 98 CD-ROM. If this happens, insert your Windows 98 CD-ROM into your CD-ROM drive, and click **OK**.

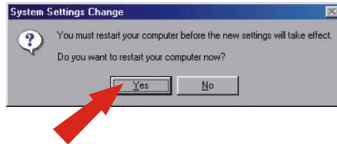


8. Click **Finish** to complete the driver installation.



9. Click **Yes**. Your computer will be updated with the new settings.

**Note:** If this prompt does not appear, you must manually restart your computer.



## **Windows ME/2000/XP**

1. Windows will automatically detect and install the appropriate driver for your network adapter.

**Congratulations!**  
**Installation is now complete.**



## 6. Troubleshooting

### Q1. Windows doesn't recognize my new hardware. What should I do?

**A1.** Go to **Start > Control Panel > System > Device Manager.** (**Start > Control Panel > System > Hardware > Device Manager** in Windows 2000/XP) In the list of device-types, locate and double-click **Network Adapters.** If you see a device with a yellow question mark or exclamation point over it, double-click it. Click the **Driver** tab, and click **Update Driver.** Follow the Hardware Update Wizard's instructions to update your computer with the driver on the included floppy disk.

If the Device Manager fails to recognize the presence of a new networking adapter, you should ensure that your network adapter is firmly seated in its PCI slot. You may also choose to move the adapter to a different PCI slot.

### Q2. Windows recognizes my new hardware, but I'm unable to connect to my network. What should I do?

**A2.** Verify that the RJ-45 Ethernet Cable is securely connected from your switch/router to your network card and that the TE100-PCIWN or Te100-PCIWA's link LED is lit. Also, ensure that the TCP/IP settings are set to **Obtain an IP address automatically.**

If you still encounter problems, please feel free to contact TRENDware's technical support team.

#### Contact Technical Support

Telephone: +1-310-626-6252

Fax: +1-310-626-6267

Website: [www.TRENDNET.com](http://www.TRENDNET.com)

E-mail: [support@trendware.com](mailto:support@trendware.com)

#### Technical Support Hours

7:00AM ~ 6:00PM, Monday through Friday  
Pacific Standard Time (except holidays)



**What's Next in Networking**

## **Product Warranty Registration**

Please take a moment to register your product online.  
Go to TRENDware's website at <http://www.TRENDNET.com>

**TRENDware International, Inc.**  
3135 Kashiwa Street  
Torrance, CA 90505

**<http://www.TRENDNET.com>**