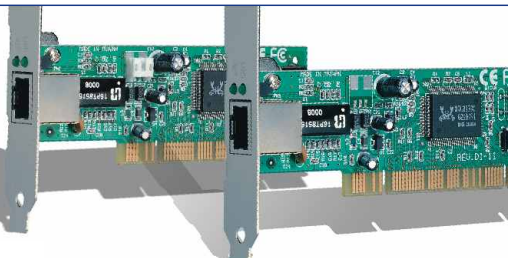


TE100-PCIWA TE100-PCIWN

Lühike paigaldusjuhend

Version 05.02.05



TRENDnet[®]
TRENDware, USA
What's Next in Networking

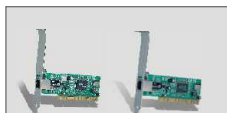
Table of Contents

Eesti	1
1. Paigalduseks valmistumine	1
2. Riistvara paigaldamine	2
3. Draiverite paigaldamine	3
Troubleshooting	7

1. Paigalduseks valmistumine

Kontrolli pakendi sisu

Please make sure you have everything in the box:



TE100-PCIWA or TE100-PCIWN



TE100-PCIW
seeria draiveriketas



Lühike paigaldusjuhend

Kontrolli seadmeid

Enne adapteri paigaldamist peaks sul olema:

1. Arvuti vaba 32-bitise PCI pesaga
2. Wake-On-LAN võimaluse kasutamiseks Wake-On-LAN toega emaplaat (ainult TE100-PCIWN puhul)
3. 300MHz protsessor ja 32 MB RAM (soovituslik)
4. Arvutisse paigaldatud Windows 98/98SE/ME/2000/XP/2003
5. RJ-45 võrgukaabel

2. Riistvara paigaldamine

Võrguadapteri paigaldamine

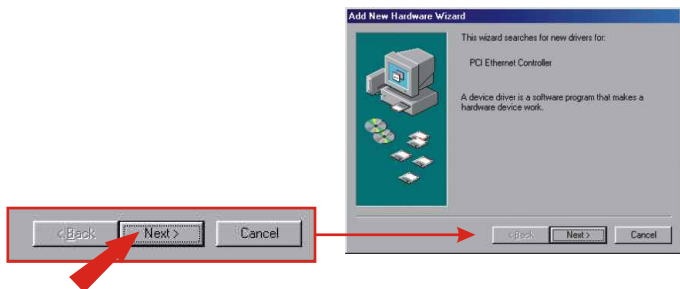
1. Lülita arvuti välja.
2. Ava arvuti korpus, et paistaksid emaplaat ja laienduspesad (korpuse avamise kohta loe lähemalt oma arvuti kasutusjuhendist).
3. Sisesta TE100-PCIWN või TE100-PCIWA võrguadapter ühte emaplaadi vabasse PCI pesasse. Suru kindlalt ja ühtlaselt kuni kaart kinnitub paigale.
4. Kui sa soovid kasutada Wake-ON-LAN võimalust, ühenda komplekti kuuluv Wake-On-LAN kaabel emaplaadi Wake-On-LAN pistikuga (ainult TE100-PCIWA puhul).
5. Kinnita PCI kaardi metallklamber tavalise kinnituskruviga.
6. Sulge arvuti korpus.
7. Ühenda RJ-45 võrgukaabel ühte otsa pidi adapteri ja teist otsa pidi DSL/kaabelmodemi või olemasoleva Fast Ethernet kohtvõrguga.
8. Lülita arvuti sisse.



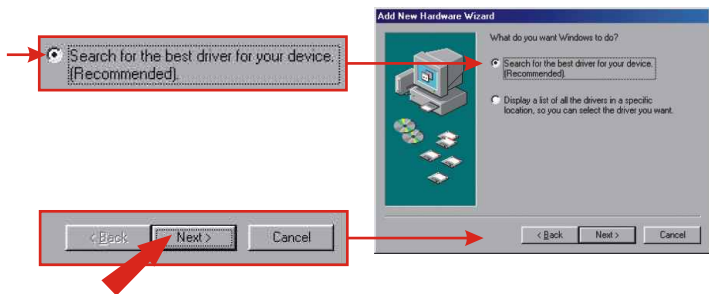
3. Draiverite paigaldamine

Võrguadapteri paigaldamine

1. Peale seda, kui arvuti taaskäivitub, ilmub **Add New Hardware** viisard. Vajuta **Next** nupule.

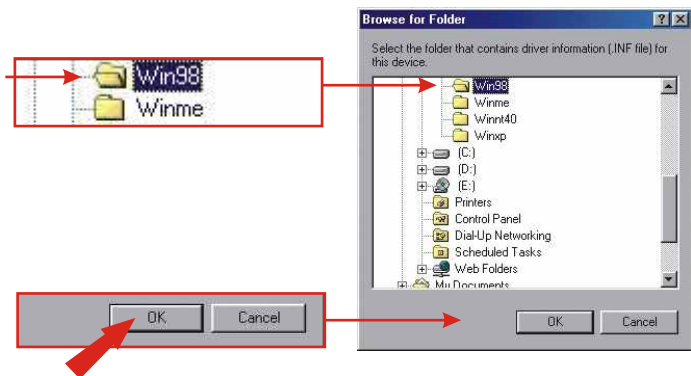


2. Sisesta komplekti kuuluv TE100-PCIW seeria draiveriketas oma arvuti flopi-seadmesse. Veendu, et valitud on **Search for the best driver for your device** ja vajuta **Next** nupule.

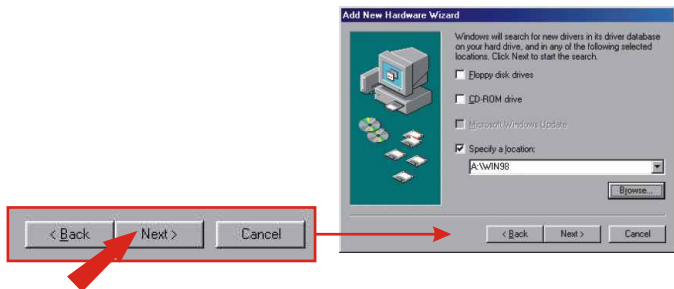


3. Vali **Specify a location** ja vajuta Browse nupule.

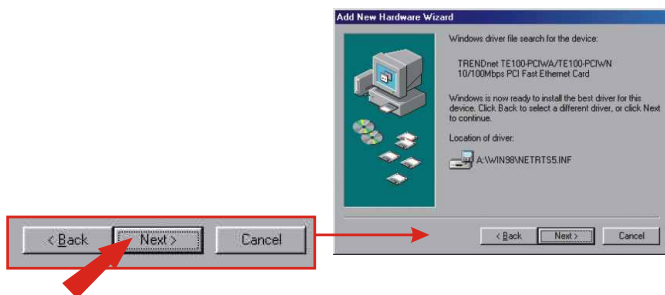
4. Topeltkliki flopidraavi (näiteks 3 1/2 Floppy (A:)). Vali kataloog **Win98** ja vajuta **OK** nupule.



5. Vajuta **Next** nupule.



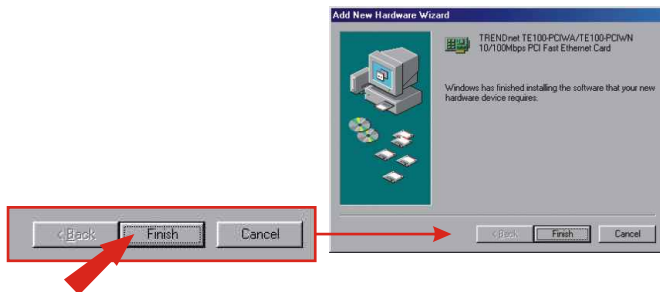
6. Kui viisard ütleb, et ta on valmis paigaldama sobivat draiverit, vajuta draiveri paigaldamise alustamiseks **Next** nupule.



7. Sul võidakse paluda sisestada oma Windows 98 CD-plaat. Kui see juhtub, sisesta oma Windows 98 CD-plaat arvuti CD-seadmesse ja vajuta **OK** nupule.



8. Draiveri paigaldamise lõpetamiseks vajuta **Finish** nupule.



9. Vajuta **Yes** nupule. Uued seadistused salvestatakse arvutisse.

Note: If this prompt does not appear, you must manually restart your computer.



Windows ME/2000/XP

1. Windows tunneb võrguadapteri automaatselt ära ja paigaldab vajalikud draiverid.

Õnnitleme!
Paigaldamine on nüüd lõppenud

6. Troubleshooting

Q1. Windows doesn't recognize my new hardware. What should I do?

A1. Go to **Start > Control Panel > System > Device Manager**. (**Start > Control Panel > System > Hardware > Device Manager** in Windows 2000/XP) In the list of device-types, locate and double-click **Network Adapters**. If you see a device with a yellow question mark or exclamation point over it, double-click it. Click the **Driver** tab, and click **Update Driver**. Follow the Hardware Update Wizard's instructions to update your computer with the driver on the included floppy disk.

If the Device Manager fails to recognize the presence of a new networking adapter, you should ensure that your network adapter is firmly seated in its PCI slot. You may also choose to move the adapter to a different PCI slot.

Q2. Windows recognizes my new hardware, but I'm unable to connect to my network. What should I do?

A2. Verify that the RJ-45 Ethernet Cable is securely connected from your switch/router to your network card and that the TE100-PCIWN or Te100-PCIWA's link LED is lit. Also, ensure that the TCP/IP settings are set to **Obtain an IP address automatically**.

If you still encounter problems, please feel free to contact TRENDware's technical support team.

Certifications

This equipment has been tested and found to comply with FCC and CE Rules. Operation is subject to the following two conditions:

- (1) This device may not cause harmful interference.
- (2) This device must accept any interference received, including interference that may cause undesired operation.



TRENDnet[®]

TRENDware, USA

What's Next in Networking

Product Warranty Registration

Please take a moment to register your product online.
Go to TRENDware's website at <http://www.TRENDNET.com>

TRENDnet Technical Support

US/Canada Support Center

Contact

Telephone: 1(310) 626-6252

Fax: 1(310) 626-6267

Email: support@trendnet.com

Tech Support Hours

7:30am - 6:00pm Pacific Standard Time

Monday - Friday

European Support Center

Contact**Telephone**

Deutsch : +49 (0) 6331 / 268-460

Français : +49 (0) 6331 / 268-461

Español : +49 (0) 6331 / 268-462

English : +49 (0) 6331 / 268-463

Italiano : +49 (0) 6331 / 268-464

Dutch : +49 (0) 6331 / 268-465

Fax: +49 (0) 6331 / 268-466

Tech Support Hours

8:00am - 6:00pm Middle European Time

Monday - Friday

TRENDware International, Inc.
3135 Kashiwa Street. Torrance, CA 90505
<http://www.TRENDNET.com>