

TE100-H24R 24-Port 100Base-TX Stackable Fast Ethernet Hubs

The TE100-H24R is an IEEE 802.3u compliant 100Mbps Fast Ethernet Class II Stackable Hub. They are designed to overcome the inherent limitation of two 100Base-TX repeater counts. The Fast Ethernet network can be easily expanded by stacking a total of four TE100-H16R, four TE100-H24R, or any combination of the two together to increase the number of ports. The network can be further expanded by linking two hub stacks together using CAT5 UTP/STP cable or 100BaseFX SC Multi-Mode Fiber cable with optional Fiber Module. The TE100-H24R is an excellent choice for the ability to scale expansion. Users can start with just one hub, then gradually add in units on a per-needed basis without disturbing the existing network structure.



FEATURES

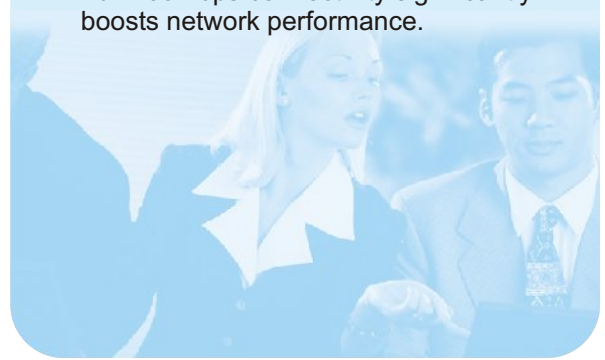
- Complies with IEEE 802.3u 100Base-TX standard
- Supports 24 100Base-TX server/workstation connections
- The TE100-H24R has two uplink ports, Uplink-1 is shared with port 12 and Uplink-2 is shared with port 24.
- Slide-in slot for optional 100Base-FX SC Multi-Mode fiber-optic module
- Per port Activity, Collision LEDs for diagnostic indication
- Sturdy all metal housing
- 19" EIA/IEC Rack-Mountable
- 100V to 240V, 50~60Hz, automatic voltage selection
- 5 Year Warranty

OPTIONS

- Slide-in module for 100Base-FX connections. (TE100-HDFXM)

BENEFITS

- **Expandable:**
Stack up to 96 users per stack.
- **Flexible:**
16 port model can stack with 24 port model. Optional Fiber Module connects network to distance as far as 412 meter.
- **Cost Effective:**
Low per port price makes Fast Ethernet affordable.
- **Versatility:**
Can be installed using STP or UTP cabling.
- **Performance:**
Full 100Mbps connectivity significantly boosts network performance.



TE100-H24R

24-Port 100Base-TX Stackable Fast Ethernet Hubs

SPECIFICATIONS

Standards:

- IEEE 802.3u, 100Base-TX, IEEE802.3u, 100Base-FX

Protocol:

- CSMA/CD

Cabling:

- CAT 5, UTP/STP 62.5/125 micron multimode fiber (half-duplex, 412 Meters)

LED's:

- Per Hub: Power, FX Link/RX, Activity, Collision
- Per Port: Link/Rx

Power:

- Internal Power Supply, (100 - 240V, 50/60Hz)

Dimensions:

- 440 x200 x 44 mm / 17.30" x 7.87" x 1.73" (L x W x H)

Weight:

- 2.68 kg / 5.89 lb

Temperature:

- Operating: -10° to 40° C / 14° to 104° F
- Storage: -20° to 70° C / -4° to 158° F

Humidity:

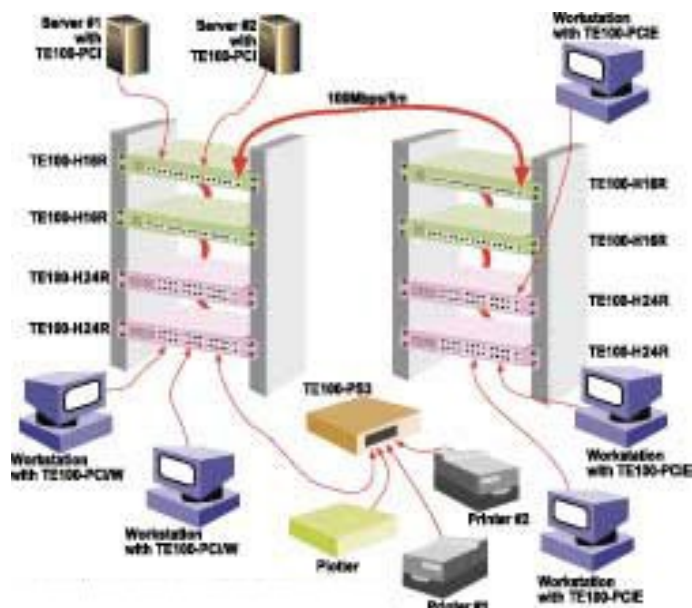
- Operating: 10% to 90% (non-condensing)
- Storage: 5% to 90% (non-condensing)

Certification:

- FCC, UL, CE



NETWORKING SOLUTIONS



To Order Please Call:
1-888-326-6061

PRODUCT INFORMATION

- **TE100-H16R:** 16-port 100Mbps Stackable Fast Ethernet hub
- **TE100-H24R:** 24-port 100Mbps Stackable Fast Ethernet hub
- **TE100-HDFXM:** Slide-in Multi-mode fiber SC type module

ORDERING INFORMATION

TRENDware International, Inc.
3135 Kashiwa Street
Torrance, CA. 90505. USA
Tel: 310-891-1100
Fax: 310-891-1111
Web: www.trendnet.com
Email: sales@trendware.com

