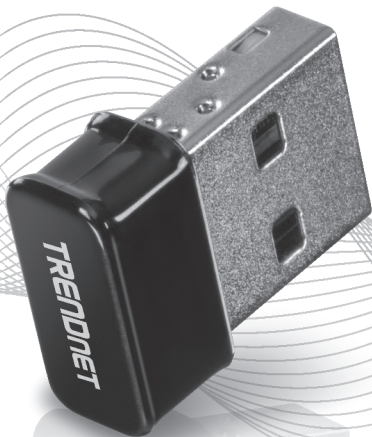


TRENDnet[®]



Quick Installation Guide

TBW-108UB(V1)

Table of Contents

1 English

1. Before you start
2. Windows® OS Installation
3. Connect to your Wireless Network
4. Pair your Bluetooth Devices

1. Before You Start

Package Contents

- TBW-108UB
- Quick Installation Guide
- CD-ROM (Driver & User's Guide)

Minimum Requirements

- Computer with USB 2.0 port or higher
- WiFi Operating System Compatibility:
 - Windows® 10 , 8.1, 8, 7, Vista, XP
- Bluetooth Operating System Compatibility:
 - Windows® 10 , 8.1, 7

2. Windows® OS Installation

1. Insert the included CD-ROM into your computer's CD-ROM drive.

Note: If you do not have the included CD-ROM, you can download the drivers from <http://www.trendnet.com/support/>

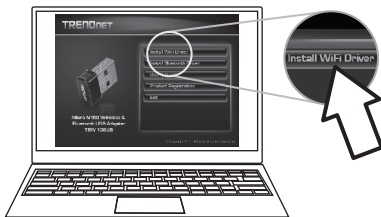


2. At the CD Autorun Prompt window, click Run Autorun.exe.

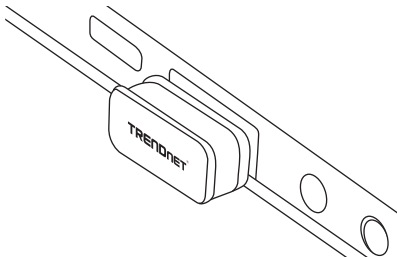
Note: If the Autorun prompt does not appear automatically, open the CD contents and double-click Autorun.exe.

3. At the CD-ROM main menu, click **Install WiFi Driver**.

Note: We recommend users first to disable onboard WiFi and Bluetooth adapters as they may interfere with TBW-108UB.



4. Follow the InstallShield Wizard instructions and restart the computer once the installation is complete. After the computer has rebooted, plug the Wireless N150 / Bluetooth USB Adapter into an available USB port on your computer.

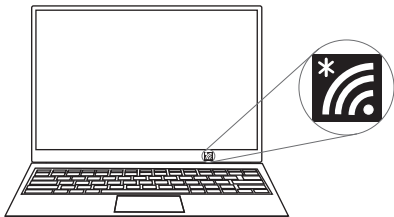


Link/ Activity LED

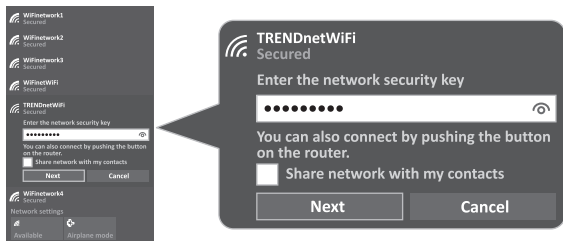
LED On	When the LED is on, the network adapter has been successfully installed.
LED Off	When the LED is off, the network adapter has not been correctly installed.

3. Connect to your Wireless Network

1. Click on the wireless icon in the taskbar located in the bottom right corner.

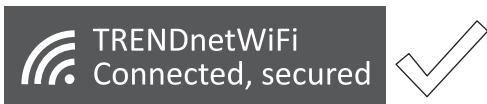


2. Select a wireless network, then enter the WiFi Key (password) and click **Next**.




3. The status will display "Connected" to indicate a successful connection.

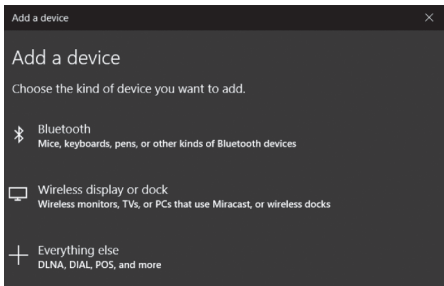
Note: If the connected message does not display, double check your WiFi key (password) and re-enter it.



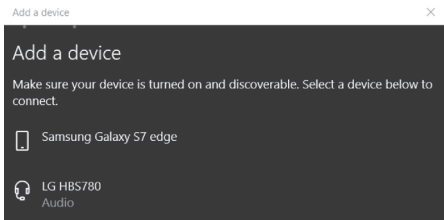
4. Pair your Bluetooth Devices

This section describes how to pair your computer with a Bluetooth device using TBW-108UB. (Windows 10)

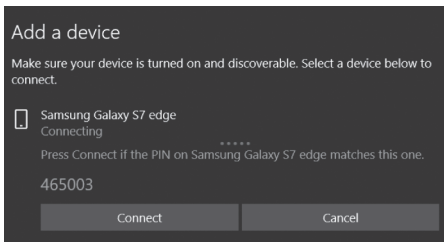
1. Click the Windows  icon at the bottom left corner of your screen, and select settings.
2. In the settings page, select **Devices**.
3. Make sure that Bluetooth is **On**, then click **Add Bluetooth or other devices**.
4. Select **Bluetooth** in the **Add a device** page. Your computer will begin searching for discoverable Bluetooth devices.



5. Once Bluetooth enabled devices in your proximity are discovered, select the device you wish to pair with.



6. A security PIN will be displayed on both your computer and your Bluetooth enabled device. Confirm the PINs are identical before selecting connect on both your computer and Bluetooth devices.



7. The Device window will alert you when the Bluetooth connection is successful.



Declaration of Conformity

TRENDNET[®]

Manufacturer's Name and Address

TRENDnet, Inc.
20675 Manhattan Place
Torrance, CA 90501 USA

Zwolsestraat 156 2587 WB
The Hague The Netherlands



Product Information:

Model Number: TBW-108UB
Product Name: Micro N150 Wireless & Bluetooth USB Adapter
Trade Name: TRENDnet

TRENDnet hereby declare that the product is in compliance with the essential requirements and other relevant provisions under our sole responsibility.

Safety EN 60950-1: 2006+A11: 2009 +A1: 2010+A12: 2011+A2: 2013

EMC
EN 300 328 V2.1.1 (2016-11)
EN 301 489-1 V2.2.0 (2017-02)
EN 301 489-17 V3.2.0 (2017-03)
EN 55032: 2012
EN 55024: 2010

This product is herewith confirmed to comply with the Directives

Directives:

EMC Directive 2014/30/EU
Radio Equipment Directive (RED) 2014/53/EU
Low Voltage Directive 2014/35/EU
REACH Regulation (EU) No.1907/2006
RoHS Directive 2011/65/EU
WEEE Directive 2012/19/EU

Person responsible for this declaration.

Place of Issue: Torrance, California, USA

Date: September 15, 2017

Name: Sonny Su

Title: Director of Technology

Signature:

A handwritten signature in black ink, appearing to read 'Sonny Su', is written over a horizontal line.



Certifications

This device complies with Part 15 of the FCC Rules. Operation is subject to the following two conditions:

- (1) This device may not cause harmful interference.
- (2) This device must accept any interference received. Including interference that may cause undesired operation.



Waste electrical and electronic products must not be disposed of with household waste. Please recycle where facilities exist. Check with your Local Authority or Retailer for recycling advice.

Technical Support

If you have any questions regarding the product installation, please contact our Technical Support.

Toll free US/Canada: **1-866-845-3673**

Regional phone numbers available at www.trendnet.com/support

TRENDnet

20675 Manhattan Place
Torrance, CA 90501
USA

Applies to PoE Products Only: This product is to be connected only to PoE networks without routing to the outside plant.

Note

The Manufacturer is not responsible for any radio or TV interference caused by unauthorized modifications to this equipment. Such modifications could void the user's authority to operate the equipment.

Advertencia

En todos nuestros equipos se mencionan claramente las características del adaptador de alimentación necesario para su funcionamiento. El uso de un adaptador distinto al mencionado puede producir daños físicos y/o daños al equipo conectado. El adaptador de alimentación debe operar con voltaje y frecuencia de la energía eléctrica domiciliar existente en el país o zona de instalación.

Product Warranty Registration

Please take a moment to register your product online. Go to TRENDnet's website at: www.trendnet.com/register