



Quick Installation Guide



TBW-101UB
TBW-102UB

Table of Contents

Français	1
1. Avant de commencer	1
2. Procéder à l'installation	2
3. Utilisation de l'adaptateur Bluetooth	4
Troubleshooting	5

1. Avant de commencer



Contenu de l'emballage

- TBW-101UB/TBW-102UB
- CD ROM Utilité
- Guide d'installation rapide
- Cordon USB

Vérification de l'équipement

1. Windows 98SE, ME, 2000 ou XP installé
2. Un port USB 1.1 disponible
3. Un lecteur de CD-ROM

Notebook with Bluetooth USB Adapter (TBW-101UB/TBW-102UB)



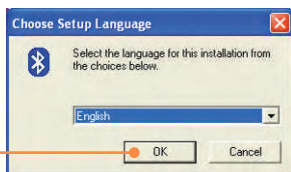
2. Procéder à l'installation

Remarque: Ne branchez pas l'adaptateur USB sans fil à votre ordinateur avant d'avoir installé cet utilitaire.

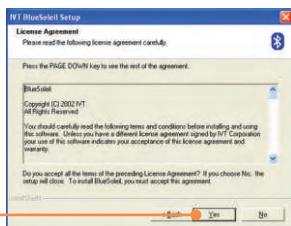
1. Insérez le CD-ROM utilitaire dans le lecteur.



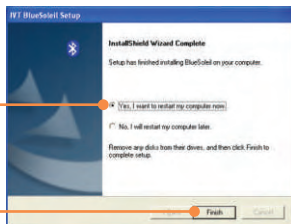
2. Choisissez la langue d'installation et cliquez sur **OK**.



3. Cliquez sur **Next** (Suivant) et ensuite sur **Yes** (Oui)



4. Cliquez sur **Next** (suivant) et sélectionnez **Oui, je veux redémarrer mon ordinateur**. Cliquez sur **Finish** (Terminer)



5. Insérez l'adaptateur USB dans un port USB.

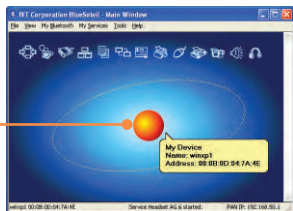


3. Utilisation de l'adaptateur Bluetooth

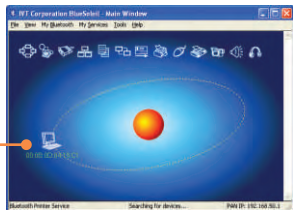
1. Double-cliquez sur l'icône Bluetooth située dans le coin inférieur droit.



2. Cliquez sur la boule orange pour rechercher les périphériques Bluetooth.



3. Double-cliquez sur les périphériques Bluetooth. Tous les services Bluetooth disponibles sont surlignés en jaune pour plus de commodité. Double-cliquez sur les périphériques Bluetooth que vous désirez activer.



L'installation est maintenant complète.

Remarque : Pour plus d'informations sur les fonctions avancées, veuillez consulter le guide de l'utilisateur.

Q1: If the Device Status indicates that the Bluetooth USB Adapter is not working properly, what should I do?

A1: Uninstall **Air2U Bluetooth Device** in **Device Manager**, and reinstall the Bluetooth utility.

Q2: How do I set up connections between Bluetooth devices?

A2: Refer to the User's Guide on the included CD-ROM or to TRENDnet's website for additional information.

Q3: How do I transfer files between my PC and my Cell Phone?

A3: You need to verify that your Cell Phone is "Bluetooth enhanced" and that the software for your phone allows file-transfers. If this is the case, refer to the User's Guide on the included CD-ROM or to TRENDnet's website for additional information.

Q4: What folder do I use to share files between Bluetooth devices?

A4: Double-click **My Documents**, double-click **Bluetooth**, and double-click **share**. All files located in the **share** folder can be transferred to other Bluetooth enabled devices.

Q5: I clicked the orange globe in the Bluetooth utility, but I still could not locate a Bluetooth device.

A5: Make sure that your Bluetooth devices are enabled, and that the TBW-101UB/TBW-102UB is connected to your computer. Then reboot all Bluetooth enabled devices and click the orange globe in the Bluetooth utility.

Q6: I cannot pair two Bluetooth enabled computers after typing a password. What do I do?

A6: Try using a simpler password with 3 characters such as 123, and see if you are able to connect to another Bluetooth enabled computer.

If you still encounter problems, please refer to the User's Guide CD-ROM or contact technical support.

Certifications

This equipment has been tested and found to comply with FCC and CE Rules. Operation is subject to the following two conditions:

- (1) This device may not cause harmful interference.
- (2) This device must accept any interference received.
Including interference that may cause undesired operation.



Waste electrical and electronic products must not be disposed of with household waste. Please recycle where facilities exist. Check with you Local Authority or Retailer for recycling advice.



NOTE: THE MANUFACTURER IS NOT RESPONSIBLE FOR ANY RADIO OR TV INTERFERENCE CAUSED BY UNAUTHORIZED MODIFICATIONS TO THIS EQUIPMENT. SUCH MODIFICATIONS COULD VOID THE USER'S AUTHORITY TO OPERATE THE EQUIPMENT.



TRENDnet

TRENDnet Technical Support

US/Canada Support Center

Contact

Telephone: 1(866) 845-3673

Email: support@trendnet.com

Tech Support Hours

24/7 Toll Free Tech Support



European Support Center

Contact**Telephone:**

Deutsch : +49 (0) 6331 / 268-460

Français : +49 (0) 6331 / 268-461

0800-90-71-61 (numéro vert)

Español : +49 (0) 6331 / 268-462

English : +49 (0) 6331 / 268-463

Italiano : +49 (0) 6331 / 268-464

Dutch : +49 (0) 6331 / 268-465

Fax: +49 (0) 6331 / 268-466

Tech Support Hours

8:00am - 6:00pm

Middle European Time

Monday - Friday

Product Warranty Registration

Please take a moment to register your product online.

Go to TRENDnet's website at <http://www.trendnet.com>

TRENDnet

3135 Kashiwa Street

Torrance, CA 90505

USA