

## **SecurView Pro Software**

- SecurView Pro Quick Installation Guide (1)

## Table of Contents

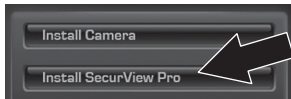
SecurView Pro Management Software Requirements .....	1
SecurView Pro Installation .....	2
Add Cameras .....	3
Schedule Continuous and Motion Detection Recordings .....	4
Archive Video Playback .....	6

## SecurView Pro Management Software Requirements

Supported Operating Systems	1-8 Cameras		9-32 Cameras	
	CPU	Memory	CPU	Memory
Windows 7 (32/64-bit) / Windows Server 2008 / Windows Vista (32/64-bit) / Windows Server 2003 / Windows XP (32/64-bit)	2GHz	2GB RAM or above	2GHz	4GB RAM or above

## SecurView Pro Installation

1. Insert the Utility CD-ROM into your CD-ROM drive.
2. Click **Install SecurView Pro**.

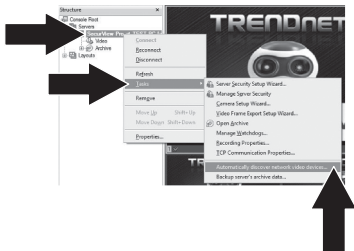


3. Select your language and then click **OK**.
4. Click next for all steps and then click **Finish**.
5. The server setup wizard will automatically run. Click next for all steps and then click **Finish**.
6. Double click the SecurView Pro icon on your desktop to open up the program.



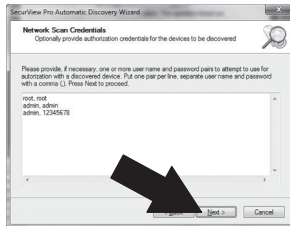
## Add Cameras

1. Right click on the server in the structure pane as shown in the screen below.
2. Select **Tasks** and then click **Automatically discover network video devices**.

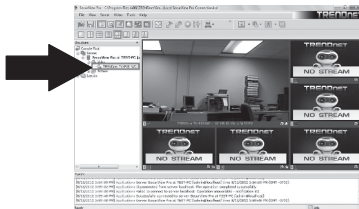


3. Follow the wizard instructions and then click **Next**.

4. **ATTENTION!** At this screen, hit enter to move cursor to third line. Input the user name followed by a comma and then input the password on the same line for your IP camera and then click **Next**. (On one line enter: Username, password)



5. Follow the wizard instructions and then click **Finish**.
6. Video will now appear. The camera will be listed in the structure pane.



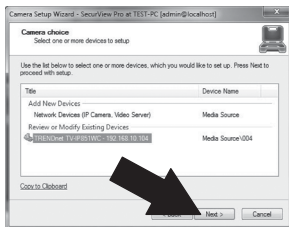
# Schedule Continuous and Motion Detection Recordings

1. Right click on the IP camera in the structure pane and click **Camera Setup Wizard**.

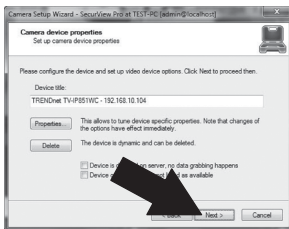


2. Click **Next** and follow the Camera Setup Wizard.

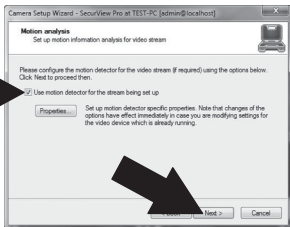
3. Select the camera and then click **Next**.



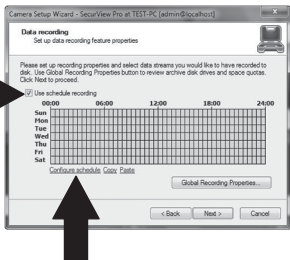
4. Click **Next**.



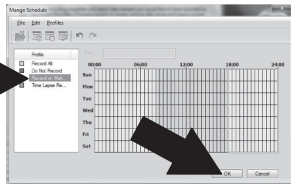
5. Check the Use Motion Detector box and click **Next**.



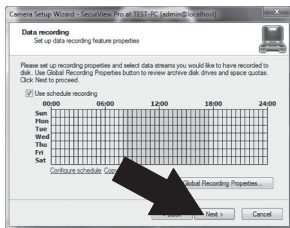
6. Select **Use schedule recording** and then click **Configure schedule**.



7. The **Manage schedule** window appears. Choose one of the profiles and drag your mouse over the desired time and day of the week. (The schedule displayed below is set up for continuous recording during the day and motion detection recording at all other times) Click **OK** to save your settings.



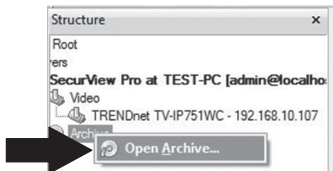
8. Click **Next**.



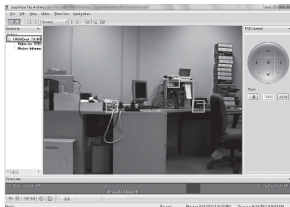
9. Follow the wizard instructions and then click **Finish**.

## Archive Video Playback

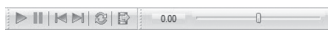
1. Right click **Archive** in the structure pane and click **Open Archive**.



2. The archive window appears. Select your camera in the structure pane.



3. Playback options include play, pause, previous or next frame, refresh, save current frame and rewind/fast forward.



For detailed information regarding advanced features of **SecurView Pro**, please refer to the User's Guide. The User's Guide can be found on the IP camera's CD-ROM.



## Product Warranty Registration

Please take a moment to register your product online.  
Go to TRENDnet's website at <http://www.trendnet.com/register>

### Certifications

This equipment has been tested and found to comply with FCC and CE Rules.  
Operation is subject to the following two conditions:

- (1) This device may not cause harmful interference.
- (2) This device must accept any interference received. Including interference that may cause undesired operation.



Waste electrical and electronic products must not be disposed of with household waste. Please recycle where facilities exist. Check with you Local Authority or Retailer for recycling advice.



**NOTE:** THE MANUFACTURER IS NOT RESPONSIBLE FOR ANY RADIO OR TV INTERFERENCE CAUSED BY UNAUTHORIZED MODIFICATIONS TO THIS EQUIPMENT. SUCH MODIFICATIONS COULD VOID THE USER'S AUTHORITY TO OPERATE THE EQUIPMENT.

### ADVERTENCIA

En todos nuestros equipos se mencionan claramente las características del adaptador de alimentación necesario para su funcionamiento. El uso de un adaptador distinto al mencionado puede producir daños físicos y/o daños al equipo conectado. El adaptador de alimentación debe operar con voltaje y frecuencia de la energía eléctrica domiciliar existente en el país o zona de instalación.

TRENDnet  
20675 Manhattan Place  
Torrance, CA 90501. USA