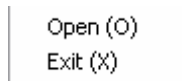


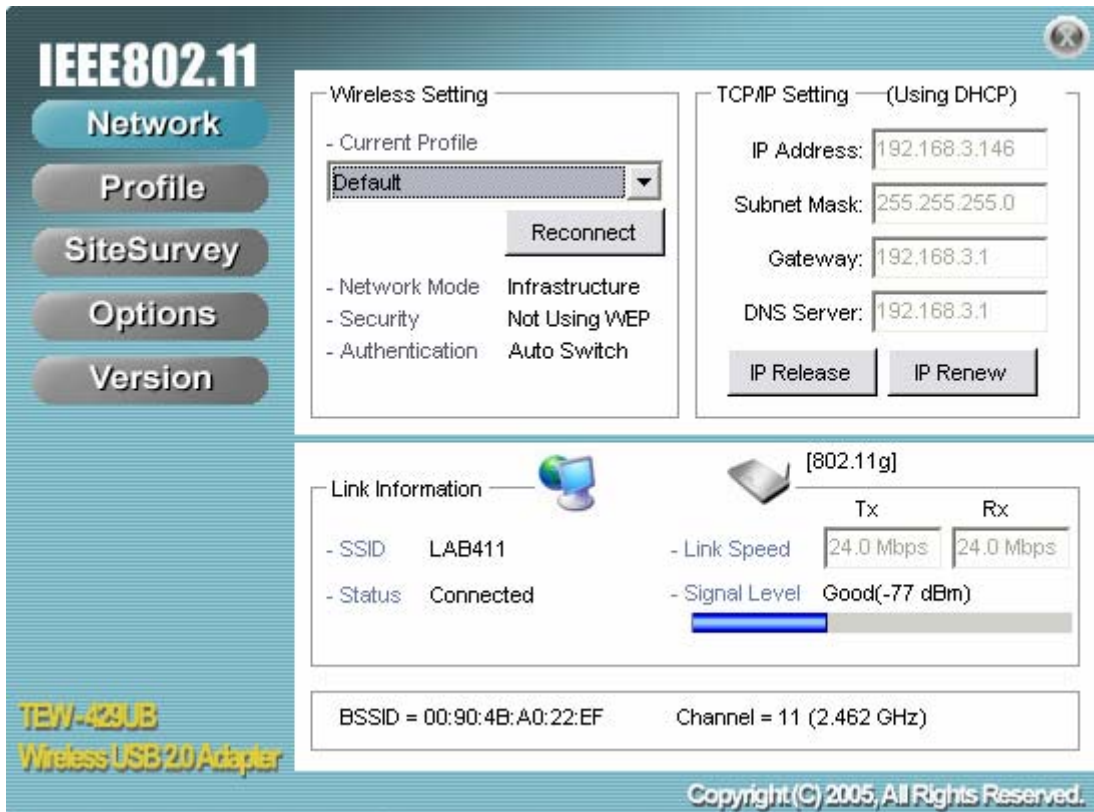
F.A.Q for TEW-429UB

Q: How do I connect to my wireless network?

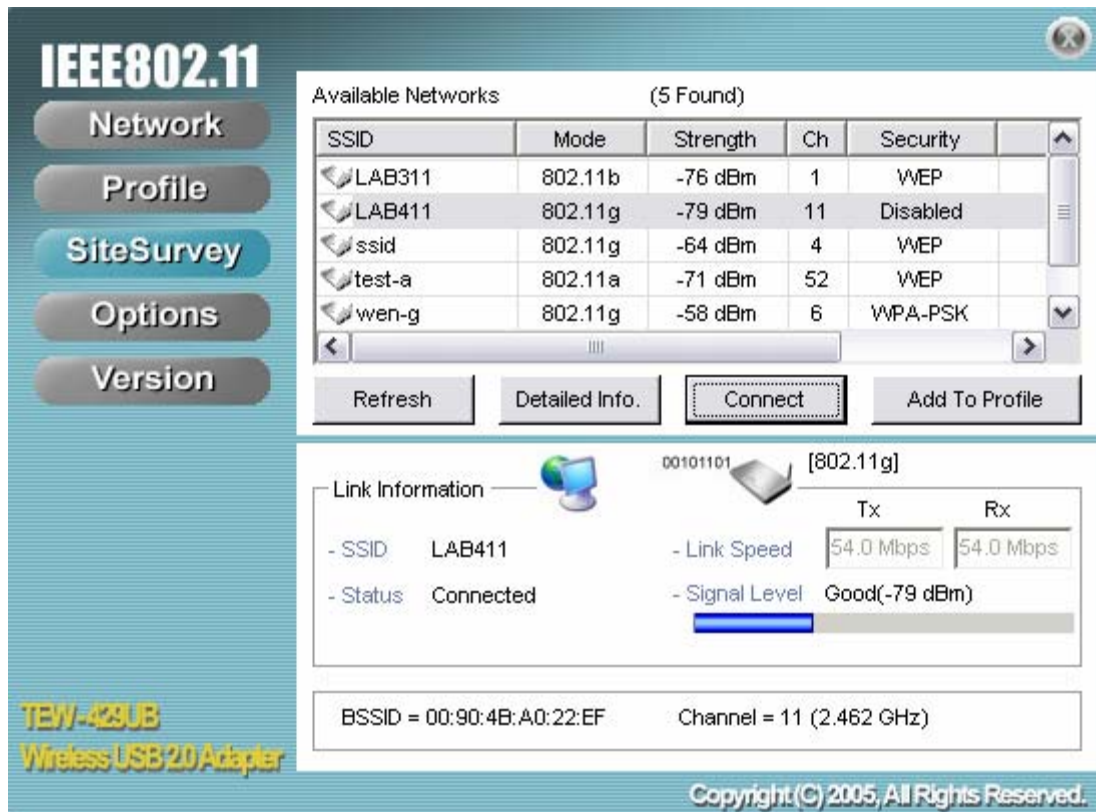
A: **Step 1** Open the utility by right clicking on the icon at the bottom right hand side of the screen and click on “Open”.



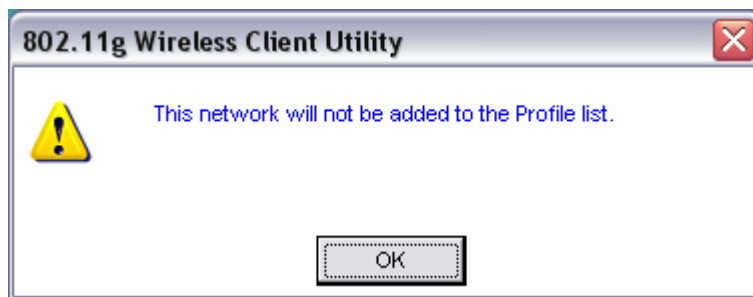
Step 2 Click on the Site Survey link then click on refresh.



Step 3 Highlight the wireless network you want to connect to. Click “Connect” then click “Ok”.

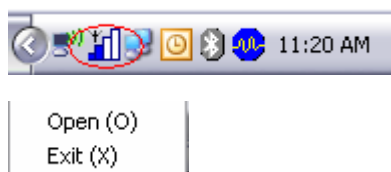


Step 4 A window will pop up notifying you that the network will not be added to your profile list. Click “OK”.

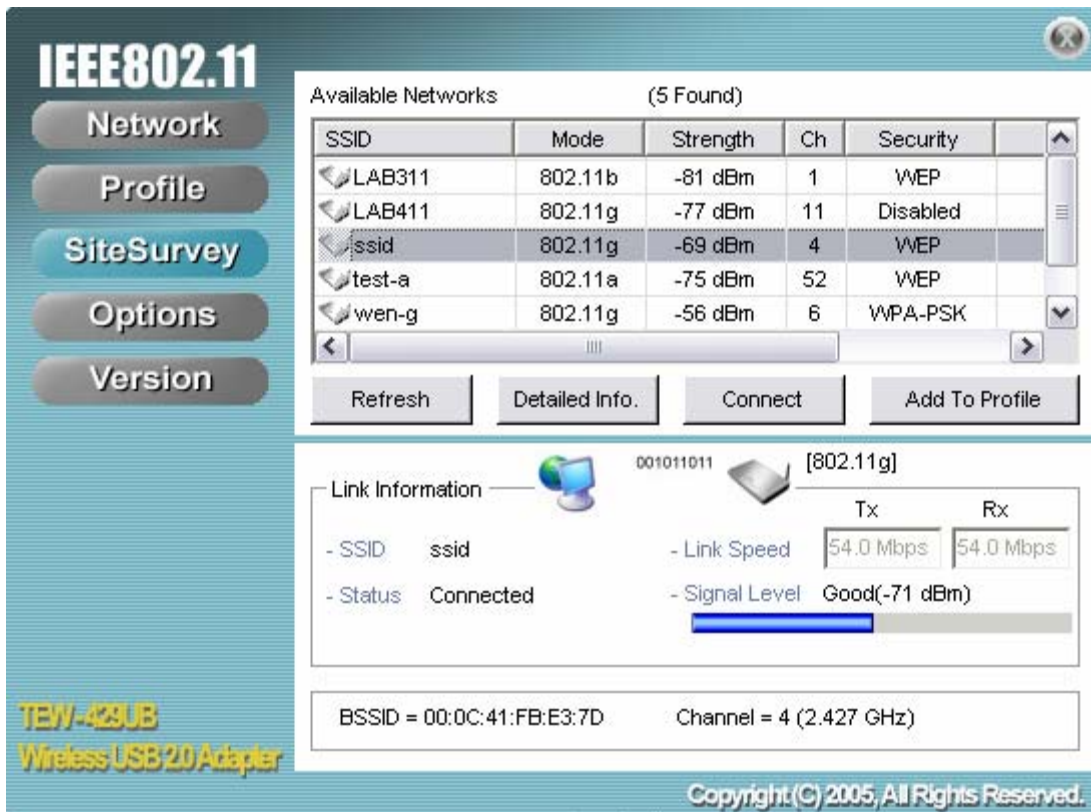


Q: How do I configure my TEW-429UB if my access point has encryption enabled?

Step 1 Open the utility by right clicking on the icon at the bottom right hand side of the screen and click on “Open”.



Step 2 Click on “Add To Profile”.



IEEE802.11
 Network
 Profile
 SiteSurvey
 Options
 Version

Available Networks (5 Found)

SSID	Mode	Strength	Ch	Security
LAB311	802.11b	-81 dBm	1	WEP
LAB411	802.11g	-77 dBm	11	Disabled
ssid	802.11g	-69 dBm	4	WEP
test-a	802.11a	-75 dBm	52	WEP
wen-g	802.11g	-56 dBm	6	WPA-PSK

Refresh Detailed Info. Connect Add To Profile

Link Information 001011011 [802.11g]

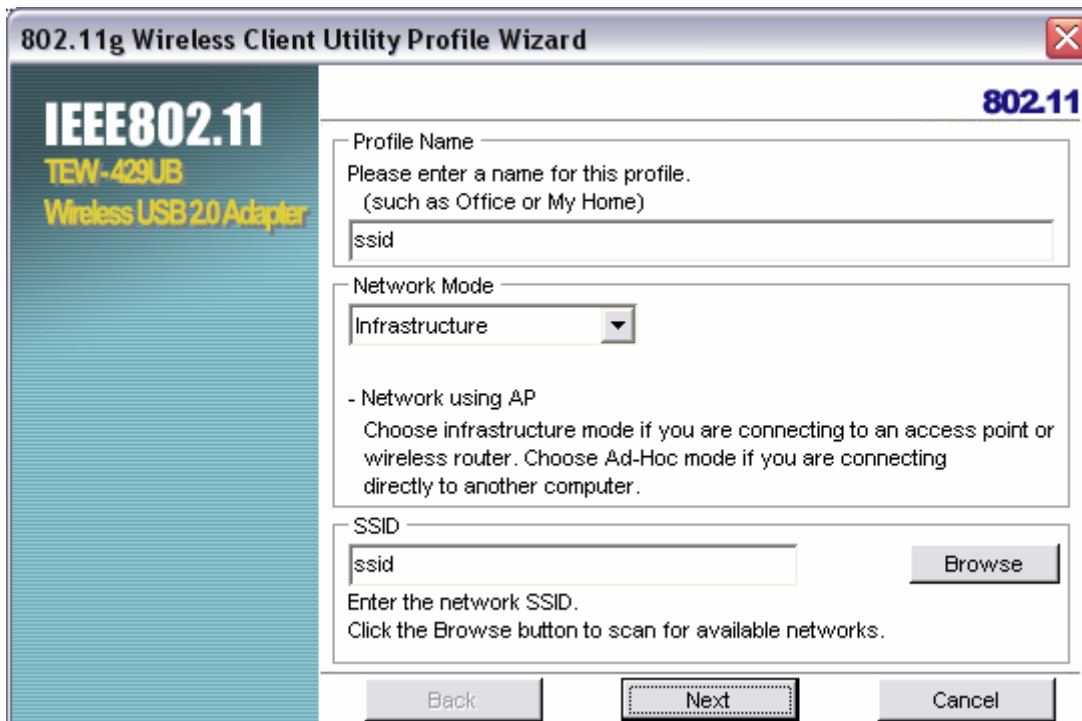
	Tx	Rx
- SSID	ssid	
- Link Speed	54.0 Mbps	54.0 Mbps
- Status	Connected	
- Signal Level	Good(-71 dBm)	

BSSID = 00:0C:41:FB:E3:7D Channel = 4 (2.427 GHz)

TEW-429UB Wireless USB 2.0 Adapter

Copyright (C) 2005, All Rights Reserved.

Step 3 Name your profile and click “Next”.



802.11g Wireless Client Utility Profile Wizard

IEEE802.11
 TEW-429UB
 Wireless USB 2.0 Adapter

802.11

Profile Name
 Please enter a name for this profile.
 (such as Office or My Home)

ssid

Network Mode
 Infrastructure

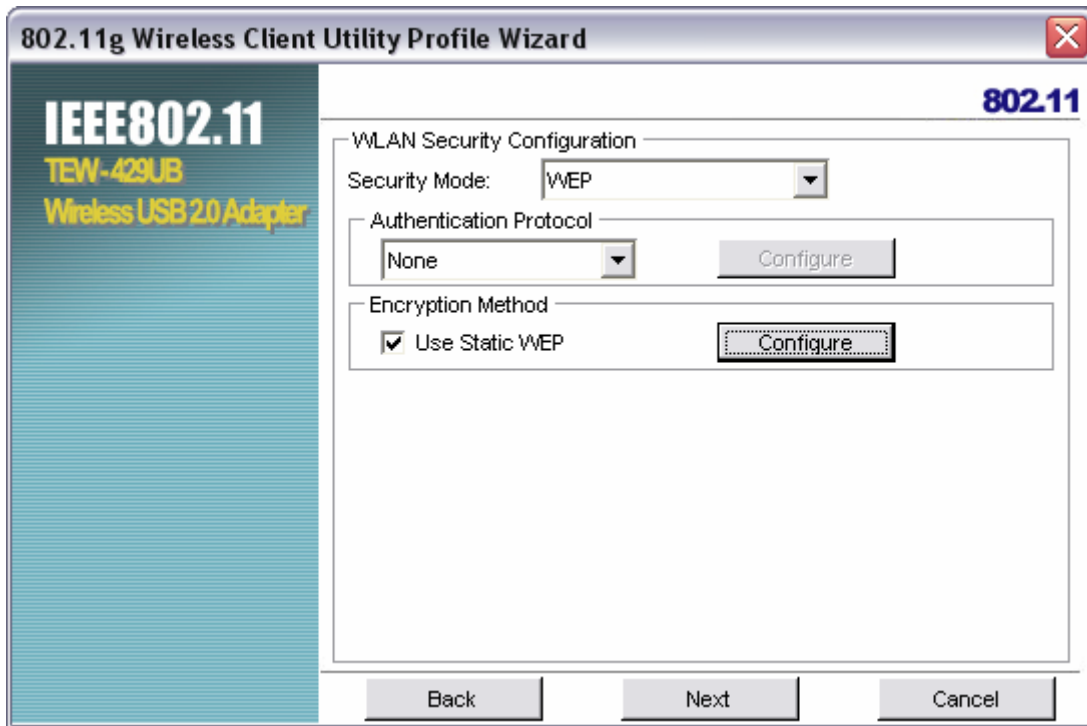
- Network using AP
 Choose infrastructure mode if you are connecting to an access point or wireless router. Choose Ad-Hoc mode if you are connecting directly to another computer.

SSID
 ssid Browse

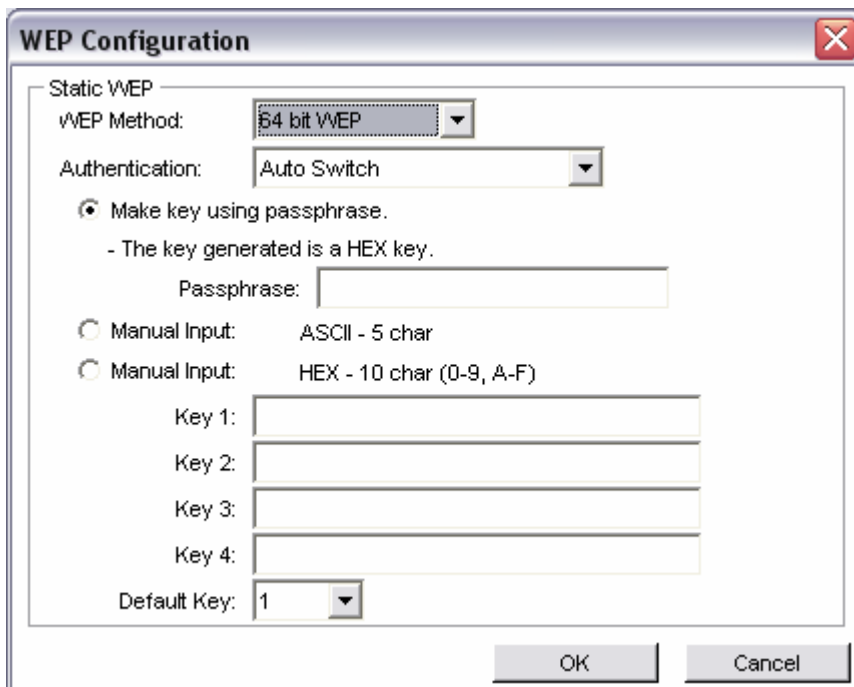
Enter the network SSID.
 Click the Browse button to scan for available networks.

Back Next Cancel

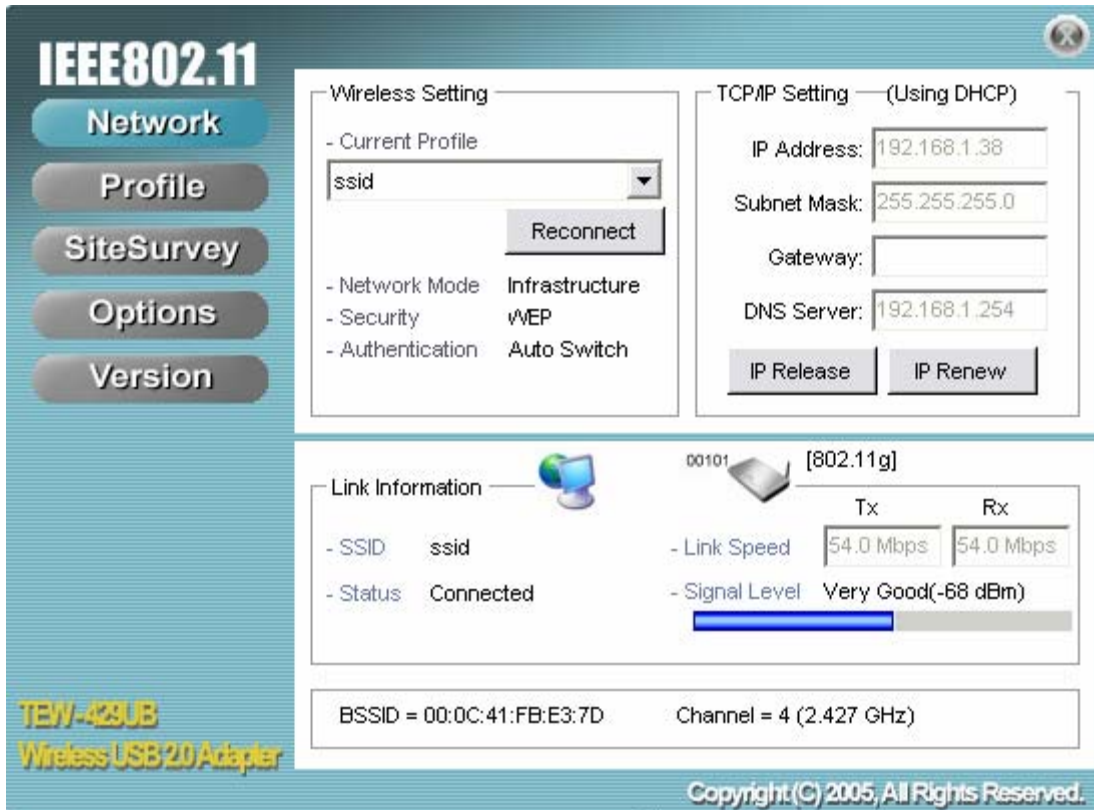
Step 4 Click on “Configure”.



Step 5 Input your encryption settings.



If you did not have encryption enabled it will switch over to the Network tab. If the connection was successful you will receive signal level for Signal Strength.



IEEE802.11

Network

Profile

SiteSurvey

Options

Version

Wireless Setting

- Current Profile: ssid

Reconnect

- Network Mode: Infrastructure

- Security: WEP

- Authentication: Auto Switch

TCP/IP Setting (Using DHCP)

IP Address: 192.168.1.38

Subnet Mask: 255.255.255.0

Gateway:

DNS Server: 192.168.1.254

IP Release IP Renew

Link Information

00101 [802.11g]

Tx Rx

- Link Speed: 54.0 Mbps 54.0 Mbps

- Signal Level: Very Good(-68 dBm)

BSSID = 00:0C:41:FB:E3:7D Channel = 4 (2.427 GHz)

TEW-429UB
Wireless USB 2.0 Adapter

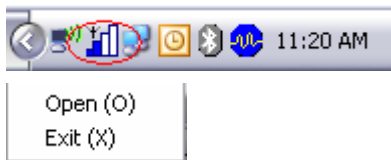
Copyright (C) 2005, All Rights Reserved.

Q: What is Ad-Hoc Mode?

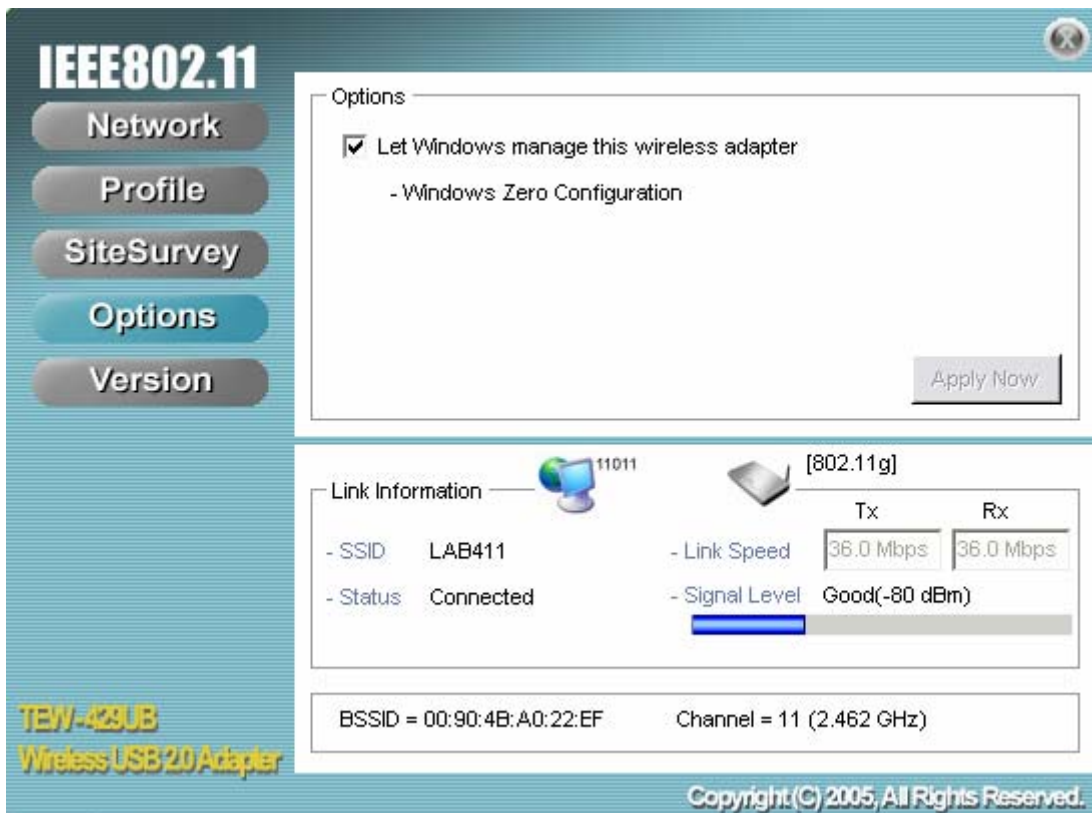
A: Peer-to-peer wireless connection between computers when no router or access point is used.

Q: Why is the connect button grayed out on the site survey tab?

A: **Step 1** Open the utility by right clicking on the icon at the bottom right hand side of the screen and click on “Open”.



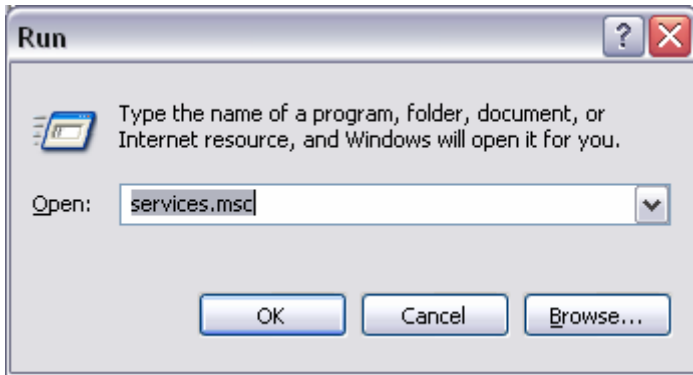
Step 2 Click on the Options and uncheck “Let Windows manage this wireless adapter”. Then click “Apply Now”.



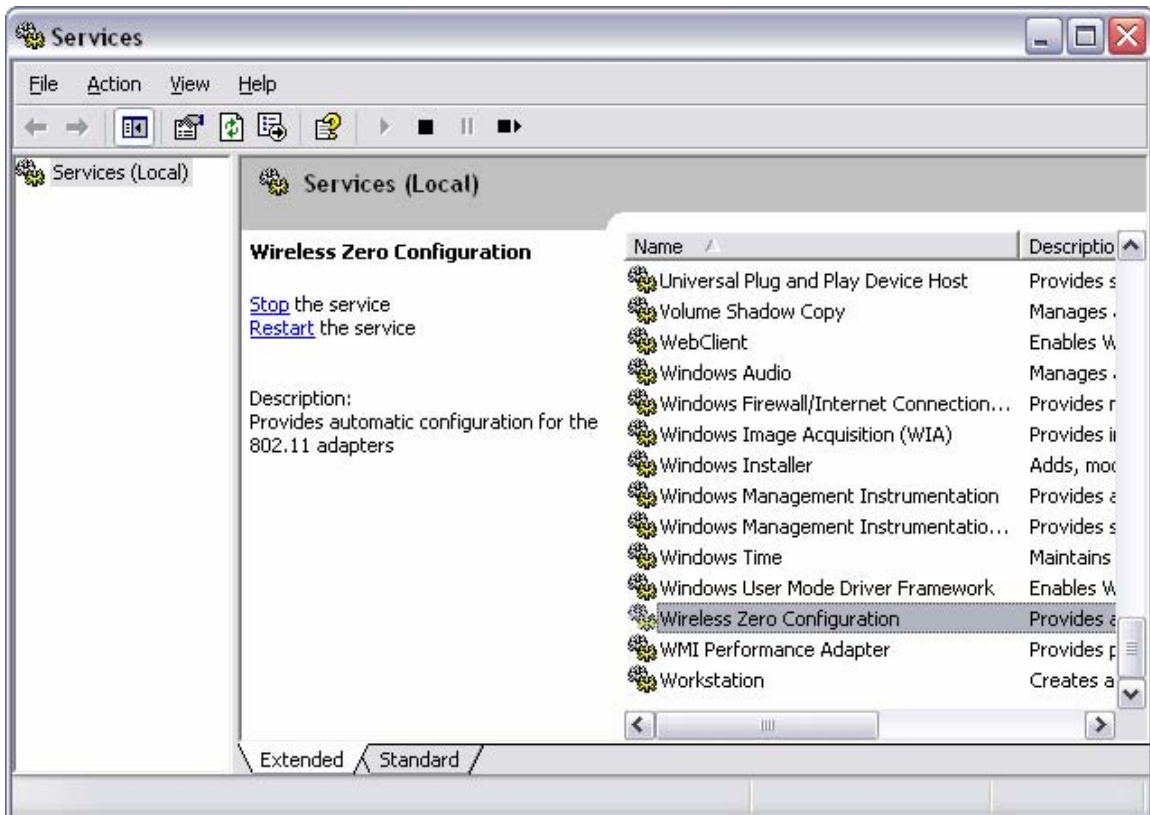
Q: Why is the Wireless Networks tab missing under the properties of my wireless network connection?

A: The Wireless Zero Configuration service is not running.

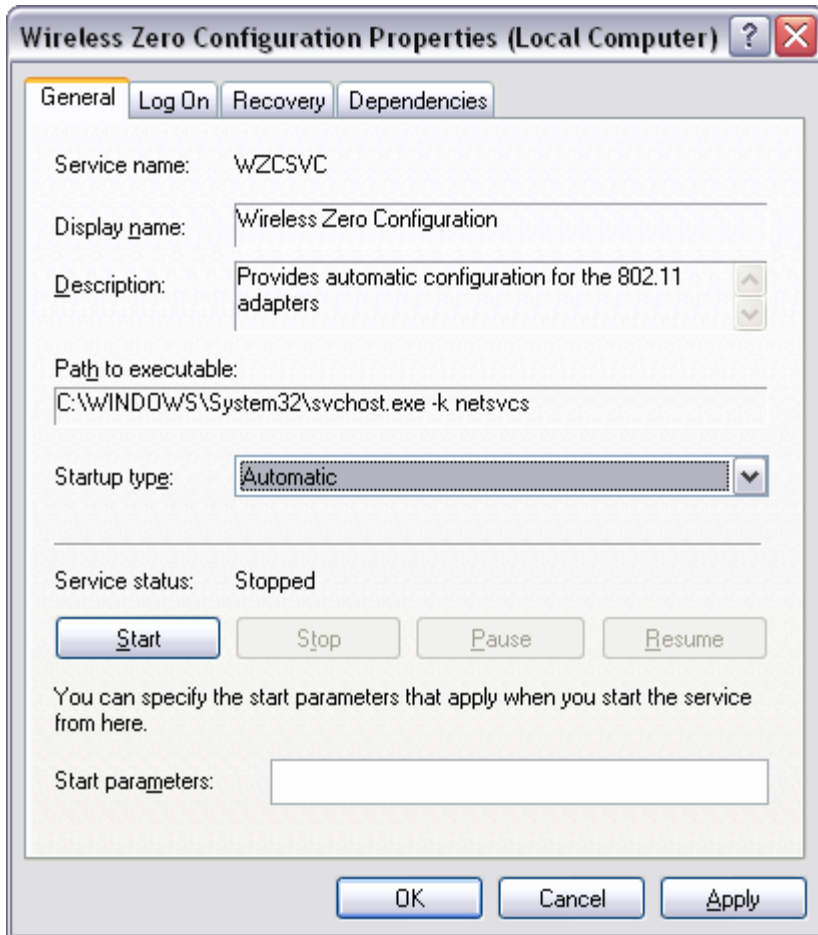
Click on Start then Run. Type in “services.msc”, without the quotes and hit enter.



This will open the services window. Double click on the Wireless zero configuration service.



Make sure the Startup type is set to Automatic and click on “Start” to start the service. Click “Apply” then “Ok”.



Q: What scanning modes are available in the TEW-429UB?

A: There are three scanning modes available indicated by an icon in the LCD display.

- 1) **S**: Lists all available networks in range in order of signal strength.
- 2) **F**: Lists only unencrypted networks in range in order of signal strength.
- 3) **D**: Continuously refreshes details of the selected wireless network. It allows you to lock on and monitor the signal strength as you move around.

Q: How do I change the scanning mode of the TEW-429UB?

A: Press and hold the seek button to toggle through the scanning modes. After you select the mode press the seek button once to rescan in that mode.

Q: How long will the battery in the TEW-429UB last?

A: On a full charge you can perform approximately 500 scanning processes.

Q: When the battery low icon appears, how long would it take before it totally runs out?

A: You can perform approximately 20 more scans before the battery runs out.

Q: How long is the charging time?

A: Charging time is approximately 2 hours.

Q: Is there an Auto Shutoff system for TEW-429UB?

A: Yes, there is. The device will turn off automatically after 1 minute if there is no other button pushed.

Q: Does the driver need to be installed to charge the TEW-429UB?

A: No, you can connect to the PC/Laptop's USB port to charge without installing the driver

Q: The battery icon does not appear on the adapter, why?

A: The battery icons would appear under these situations:

- 1) Low Battery Icon - Appears under Scan Mode when the battery is low.
- 2) Full Charged Battery Icon - Appears under Charge mode when the battery is fully charged
- 3) Charging Icon - Appears under Charge mode when it's charging.

Q: During charging, some adapters would show a big "battery charging" icon.

A: In this case, please update to the latest firmware (currently v1.0.1.51). The icon will be revised to the icons mentioned above.

Q: Why am I getting low signal strength?

A: There are a number of factors that can impact the range of wireless devices.

- 1) Keep the number of obstructions to a minimum. Each obstruction can reduce the range of a wireless device. Position the wireless devices in a manner that will minimize the amount of obstructions between them.
- 2) Building materials can have a large impact on your wireless signal. In an indoor environment try to position the wireless devices so that the signal passes through drywall or open doorways or space.

- 3) Antenna position can also have a large impact on your wireless signal. Use the adapter's site survey tool to determine the best antenna position for your wireless devices.
- 4) Interference from devices that produce RF noise can also impact your signal. Position your wireless devices away from Microwaves, UPS's, monitors, HAM radios, etc. Also, anything operating on the 2.4ghz frequency will cause interference. Such as 2.4ghz cordless phones or other wireless remotes operating on the 2.4ghz frequency.

If you are experiencing low, or no, signal strength consider repositioning the wireless devices, repeating the signal or using stronger antenna's to boost the signal strength.