



Quick Installation Guide



**Indoor / Outdoor Antenna,
Antenna Cable & Surge Arrestor**

Table of Contents

Deutsch	1
1. Installation der Außenantenne	1
2. Installation des Überspannungsableiters	4
3. Wetterfestes Band für die Außennutzung	5
4. Installation der Innenantenne	6

1. Installation der Außenantenne

Kontrollieren Sie bitte vor der Installation, dass alle erforderlichen Produkte vorhanden und vollständig sind.



Eine der folgenden Antennen:

TEW-AO080	TEW-AO100	TEW-AO09D	TEW-AO14D	TEW-AO19D
				

1. Nehmen Sie die standardmäßige Dipolantenne von Ihrem Access Point oder Router ab.



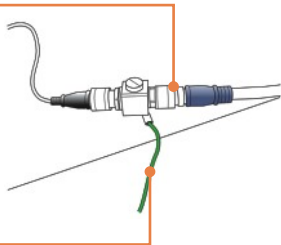
2. Verbinden Sie die blaue Hülse des Jumper-Kabels (Reverse SMA) mit Ihrem Wi-Fi-Gerät.



3. Verbinden Sie die schwarze Hülse (N-Typ) des Jumper-Kabels mit dem Überspannungsableiter. (Siehe Kapitel 2 "Installation des Überspannungsableiters")



4. Verbinden Sie den anderen Anschluss des Überspannungsableiters mit der blauen Hülse (N-Typ) des Antennenkabels. (TEW-L406/ TEW-L412)



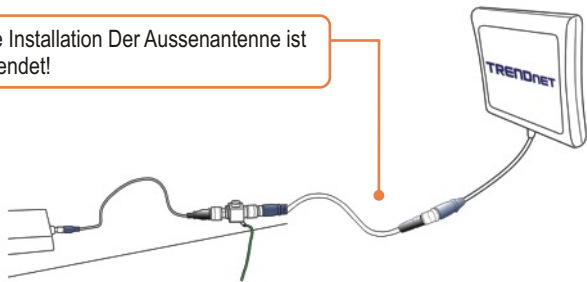
5. Verbinden Sie den grünen Draht mit der Erdung
z.B.:

1. Erdungsstange
2. Geerdetes elektrisches System
3. Baukonstruktion

6. Verbinden Sie die schwarze Hülse (N-Typ) des Antennenkabels mit der Antenne.

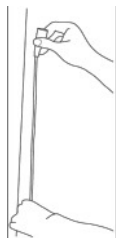


7. Die Installation Der Aussenantenne ist beendet!



2. Installation des Überspannungsableiters

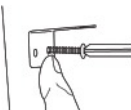
1. Achten Sie vor der Installation der Antenne darauf, dass das verlustarme Außenkabel (TEW-L406/TEW-L412) bis zu Ihrem Access Point oder Router reicht. Verbinden Sie die blaue Hülse des beiliegenden Kabeladapters mit dem WiFi-Gerät (Reverse SMA) und die schwarze Hülse (N-Typ) mit dem Überspannungsableiter.



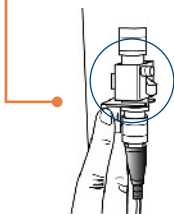
2. Nehmen Sie den Metallwinkel heraus und markieren Sie die Position an der Wand.



3. Schrauben Sie ihn an der Wand fest.



4. Setzen Sie den Ableiter in den Haltearm.



Unterleg-scheibe aufsetzen



Mutter anziehen



3. Wetterfestes Band für die Außennutzung

Wenn Sie Ihren Überspannungsableiter im Freien installieren, sollten Sie beide Anschlüsse fest mit dem beiliegenden wetterfesten Band umwickeln.



4. Installation der Innenantenne

Kontrollieren Sie bitte vor der Installation, dass alle erforderlichen Produkte vorhanden und vollständig sind.



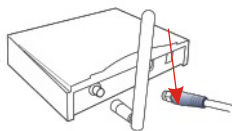
Eine der folgenden Antennen:



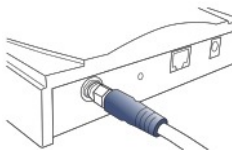
Hinweis: Die folgenden Innenantennen werden mit Kabeln geliefert oder können direkt an Ihr Wi-Fi-Gerät angeschlossen werden. Es sind keine weiteren Kabel erforderlich:



1. Nehmen Sie die Dipolantenne von Ihrem Access Point oder Router ab.



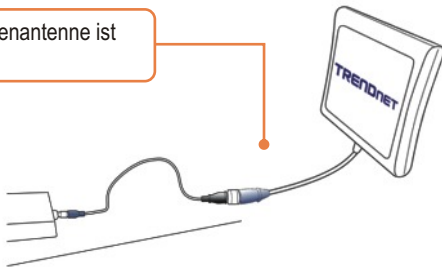
2. Verbinden Sie die blaue Hülse (Reverse SMA) des Innenkabels (TEW-L202/TEW-L208) direkt mit Ihrem WiFi-Gerät.



3. Verbinden Sie die schwarze Hülse (N-Typ) des Antennenkabels mit der blauen Hülse (N-Typ) der Antenne.



4. Die Installation Der Innenantenne ist beendet!



Limited Warranty

TRENDnet warrants its products against defects in material and workmanship, under normal use and service, for the following lengths of time from the date of purchase.

TEW-ASAK, TEW-L202, TEW-L208, TEW-L406, TEW-L412 - 3 Year Warranty
TEW-AO080, TEW-AO100, TEW-AO09D, TEW-AO14D, TEW-AO19D- 3 Year Warranty

If a product does not operate as warranted above during the applicable warranty period, TRENDnet shall, at its option and expense, repair the defective product or part, deliver to customer an equivalent product or part to replace the defective item, or refund to customer the purchase price paid for the defective product. All products that are replaced will become the property of TRENDnet. Replacement products may be new or reconditioned.

TRENDnet shall not be responsible for any software, firmware, information, or memory data of customer contained in, stored on, or integrated with any products returned to TRENDnet pursuant to any warranty.

There are no user serviceable parts inside the product. Do not remove or attempt to service the product by any unauthorized service center. This warranty is voided if (i) the product has been modified or repaired by any unauthorized service center, (ii) the product was subject to accident, abuse, or improper use (iii) the product was subject to conditions more severe than those specified in the manual.

Warranty service may be obtained by contacting TRENDnet office within the applicable warranty period for a Return Material Authorization (RMA) number, accompanied by a copy of the dated proof of the purchase. Products returned to TRENDnet must be pre-authorized by TRENDnet with RMA number marked on the outside of the package, and sent prepaid, insured and packaged appropriately for safe shipment.

WARRANTIES EXCLUSIVE: IF THE TRENDnet PRODUCT DOES NOT OPERATE AS WARRANTED ABOVE, THE CUSTOMER'S SOLE REMEDY SHALL BE, AT TRENDnet'S OPTION, REPAIR OR REPLACEMENT. THE FOREGOING WARRANTIES AND REMEDIES ARE EXCLUSIVE AND ARE IN LIEU OF ALL OTHER WARRANTIES, EXPRESSED OR IMPLIED, EITHER IN FACT OR BY OPERATION OF LAW, STATUTORY OR OTHERWISE, INCLUDING WARRANTIES OF MERCHANTABILITY AND FITNESS FOR A PARTICULAR PURPOSE. TRENDnet NEITHER ASSUMES NOR AUTHORIZES ANY OTHER PERSON TO ASSUME FOR IT ANY OTHER LIABILITY IN CONNECTION WITH THE SALE, INSTALLATION MAINTENANCE OR USE OF TRENDnet'S PRODUCTS.

TRENDnet SHALL NOT BE LIABLE UNDER THIS WARRANTY IF ITS TESTING AND EXAMINATION DISCLOSE THAT THE ALLEGED DEFECT IN THE PRODUCT DOES NOT EXIST OR WAS CAUSED BY CUSTOMER'S OR ANY THIRD PERSON'S MISUSE, NEGLIGENCE, IMPROPER INSTALLATION OR TESTING, UNAUTHORIZED ATTEMPTS TO REPAIR OR MODIFY, OR ANY OTHER CAUSE BEYOND THE RANGE OF THE INTENDED USE, OR BY ACCIDENT, FIRE, LIGHTNING, OR OTHER HAZARD.

LIMITATION OF LIABILITY: TO THE FULL EXTENT ALLOWED BY LAW TRENDnet ALSO EXCLUDES FOR ITSELF AND ITS SUPPLIERS ANY LIABILITY, WHETHER BASED IN CONTRACT OR TORT (INCLUDING NEGLIGENCE), FOR INCIDENTAL, CONSEQUENTIAL, INDIRECT, SPECIAL, OR PUNITIVE DAMAGES OF ANY KIND, OR FOR LOSS OF REVENUE OR PROFITS, LOSS OF BUSINESS, LOSS OF INFORMATION OR DATE, OR OTHER FINANCIAL LOSS ARISING OUT OF OR IN CONNECTION WITH THE SALE, INSTALLATION, MAINTENANCE, USE, PERFORMANCE, FAILURE, OR INTERRUPTION OF THE POSSIBILITY OF SUCH DAMAGES, AND LIMITS ITS LIABILITY TO REPAIR, REPLACEMENT, OR REFUND OF THE PURCHASE PRICE PAID, AT TRENDnet'S OPTION. THIS DISCLAIMER OF LIABILITY FOR DAMAGES WILL NOT BE AFFECTED IF ANY REMEDY PROVIDED HEREIN SHALL FAIL OF ITS ESSENTIAL PURPOSE.

Governing Law: This Limited Warranty shall be governed by the laws of the state of California.

AC/DC Power Adapter, Cooling Fan, Power Supply, and Cables carry 1 Year Warranty

Certifications

This equipment has been tested and found to comply with FCC and CE Rules.

Operation is subject to the following two conditions:

- (1) This device may not cause harmful interference.
- (2) This device must accept any interference received. Including interference that may cause undesired operation.



Waste electrical and electronic products must not be disposed of with household waste. Please recycle where facilities exist. Check with you Local Authority or Retailer for recycling advice.



NOTE: THE MANUFACTURER IS NOT RESPONSIBLE FOR ANY RADIO OR TV INTERFERENCE CAUSED BY UNAUTHORIZED MODIFICATIONS TO THIS EQUIPMENT. SUCH MODIFICATIONS COULD VOID THE USER'S AUTHORITY TO OPERATE THE EQUIPMENT.

ADVERTENCIA

En todos nuestros equipos se mencionan claramente las características del adaptador de alimentación necesario para su funcionamiento. El uso de un adaptador distinto al mencionado puede producir daños físicos y/o daños al equipo conectado. El adaptador de alimentación debe operar con voltaje y frecuencia de la energía eléctrica domiciliar existente en el país o zona de instalación.



TRENDnet Technical Support

US • Canada

Toll Free Telephone: 1(866) 845-3673

24/7 Tech Support

Europe (Germany • France • Italy • Spain • Switzerland • UK)

Toll Free Telephone: +00800 60 76 76 67

English/Espanol - 24/7

Francais/Deutsch - 11am-8pm, Monday - Friday MET

Worldwide

Telephone: +[31] (0) 20 504 05 35

English/Espanol - 24/7

Francais/Deutsch - 11am-8pm, Monday - Friday MET



Product Warranty Registration

Please take a moment to register your product online.

Go to TRENDnet's website at <http://www.trendnet.com>

TRENDnet[®]
20675 Manhattan Place
Torrance, CA 90501
USA